

Product datasheet

Anti-DUS2L antibody ab65247

2 图像

概述

产品名称	Anti-DUS2L 抗体
描述	兔多克隆抗体 to DUS2L
宿主	Rabbit
特异性	ab65247 detects endogenous levels of total DUS2L protein.
经测试应用	适用于: ELISA, IHC-P, WB
种属反应性	与反应: Mouse, Human
免疫原	Synthetic peptide derived from C terminus of human DUS2L.
阳性对照	Human skeletal muscle tissue and RAW264.7 cell extracts.

性能

形式	Liquid
存放说明	Shipped at 4°C. Store at -20°C. Stable for 12 months at -20°C.
存储溶液	Preservative: 0.02% Sodium Azide Constituents: 50% Glycerol, PBS (without Mg <sup>2+</sup> and Ca <sup>2+</sup> ), 150mM Sodium chloride, pH 7.4
纯度	Immunogen affinity purified
克隆	多克隆
同种型	IgG

应用

Our [Abpromise guarantee](#) covers the use of **ab65247** in the following tested applications.

The application notes include recommended starting dilutions; optimal dilutions/concentrations should be determined by the end user.

应用	Ab评论	说明
ELISA		1/20000.
IHC-P		1/50 - 1/100.
WB		1/500 - 1/1000. Detects a band of approximately 55 kDa (predicted molecular weight: 55 kDa).

## 靶标

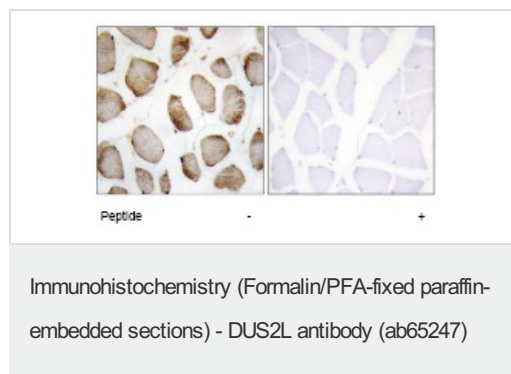
### 相关性

DUS2L is a dihydrouridine synthase that catalyzes the reduction of the 5,6-double bond of a uridine residue on the displacement loop of tRNA. The resultant modified base, 5,6-dihydrouridine, appears to increase the conformational flexibility and dynamic motion of tRNA.

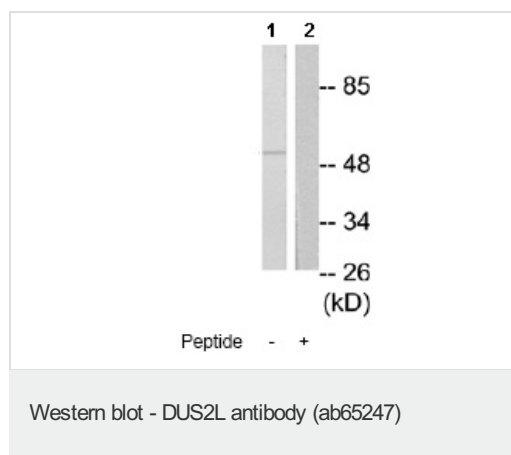
### 细胞定位

Cytoplasmic and Endoplasmic reticulum. Note=Mainly at the endoplasmic reticulum.

## 图片



ab65247 at 1/50 dilution staining DUS2L in human skeletal muscle by Immunohistochemistry, Paraffin-embedded tissue, in the absence or presence of the immunising peptide.



**All lanes :** Anti-DUS2L antibody (ab65247) at 1/500 dilution

**Lane 1 :** RAW264.7 cell extract

**Lane 2 :** RAW264.7 cell extract with immunising peptide at 5 µg

Lysates/proteins at 5 µg per lane.

**Predicted band size:** 55 kDa

**Observed band size:** 55 kDa

**Please note:** All products are "FOR RESEARCH USE ONLY AND ARE NOT INTENDED FOR DIAGNOSTIC OR THERAPEUTIC USE"

## Our Abpromise to you: Quality guaranteed and expert technical support

- Replacement or refund for products not performing as stated on the datasheet
- Valid for 12 months from date of delivery
- Response to your inquiry within 24 hours
- We provide support in Chinese, English, French, German, Japanese and Spanish
- Extensive multi-media technical resources to help you
- We investigate all quality concerns to ensure our products perform to the highest standards

If the product does not perform as described on this datasheet, we will offer a refund or replacement. For full details of the Abpromise, please visit <http://www.abcam.cn/abpromise> or contact our technical team.

## Terms and conditions

---

- Guarantee only valid for products bought direct from Abcam or one of our authorized distributors