


Product datasheet

Anti-PFKL antibody ab65066

1 图像

概述

产品名称	Anti-PFKL 抗体
描述	兔多克隆抗体 to PFKL
宿主	Rabbit
特异性	Detects endogenous levels of total PFKL protein.
经测试应用	适用于: WB, ELISA
种属反应性	与反应: Mouse, Human 预测可用于: Rat 
免疫原	Synthetic peptide derived from C-terminus of human PFKL
阳性对照	Extracts from A549 and NIH-3T3 cells

性能

形式	Liquid
存放说明	Shipped at 4°C. Store at -20°C. Stable for 12 months at -20°C.
存储溶液	Preservative: 0.02% Sodium Azide Constituents: 50% Glycerol, PBS (without Mg <sup>2+</sup> and Ca <sup>2+</sup> ), 150mM Sodium chloride, pH 7.4
纯度	Immunogen affinity purified
克隆	多克隆
同种型	IgG

应用

Our [Abpromise guarantee](#) covers the use of **ab65066** in the following tested applications.

The application notes include recommended starting dilutions; optimal dilutions/concentrations should be determined by the end user.

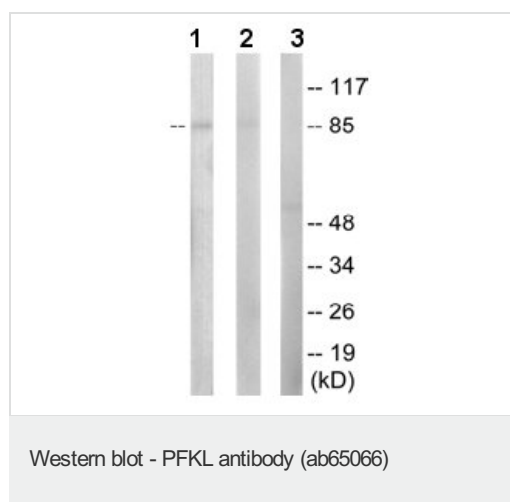
应用	Ab评论	说明
WB		1/500 - 1/1000. Detects a band of approximately 85 kDa (predicted molecular weight: 85 kDa).
ELISA		1/20000.

## 靶标

**相关性** PFKL is the Liver isozyme of PFK (Phosphofructokinase), which is a tetrameric enzyme that catalyzes a key step in glycolysis, namely the conversion of D-fructose 6-phosphate to D-fructose 1,6-bisphosphate. Separate genes encode a muscle subunit (M) and a liver subunit (L). PFK from muscle is a homotetramer of M subunits, PFK from liver is a homotetramer of L-subunits, while PFK from platelets can be composed of any tetrameric combination of M and L subunits.

**细胞定位** Cytoplasmic

## 图片



**All lanes :** Anti-PFKL antibody (ab65066) at 1/500 dilution

**Lane 1 :** extracts from A549 cells

**Lane 2 :** extracts from NIH-3T3 cells

**Lane 3 :** extracts from NIH-3T3 cells with immunizing peptide at 5 µg

Lysates/proteins at 5 µg per lane.

**Predicted band size:** 85 kDa

**Observed band size:** 85 kDa

**Please note:** All products are "FOR RESEARCH USE ONLY AND ARE NOT INTENDED FOR DIAGNOSTIC OR THERAPEUTIC USE"

## Our Abpromise to you: Quality guaranteed and expert technical support

- Replacement or refund for products not performing as stated on the datasheet
- Valid for 12 months from date of delivery
- Response to your inquiry within 24 hours
- We provide support in Chinese, English, French, German, Japanese and Spanish
- Extensive multi-media technical resources to help you
- We investigate all quality concerns to ensure our products perform to the highest standards

If the product does not perform as described on this datasheet, we will offer a refund or replacement. For full details of the Abpromise, please visit <http://www.abcam.cn/abpromise> or contact our technical team.

## Terms and conditions

- Guarantee only valid for products bought direct from Abcam or one of our authorized distributors