

Product datasheet

Anti-Cdc6 antibody ab64880

1 图像

概述

产品名称	Anti-Cdc6抗体
描述	兔多克隆抗体to Cdc6
经测试应用	适用于: ELISA, WB
种属反应性	与反应: Human
免疫原	Synthetic peptide from the C terminus of human CDC6.
阳性对照	Extracts from K562 cells.

性能

形式	Liquid
存放说明	Shipped at 4°C. Store at -20°C. Stable for 12 months at -20°C.
存储溶液	Preservative: 0.02% Sodium Azide Constituents: 50% Glycerol, PBS (without Mg ²⁺ and Ca ²⁺), 150mM Sodium chloride, pH 7.4
纯度	Immunogen affinity purified
克隆	多克隆
同种型	IgG

应用

Our [Abpromise guarantee](#) covers the use of **ab64880** in the following tested applications.

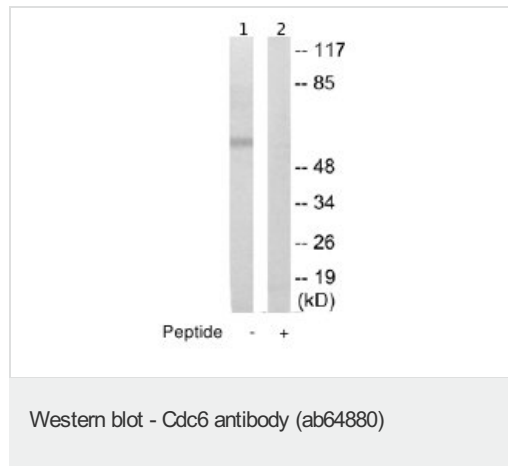
The application notes include recommended starting dilutions; optimal dilutions/concentrations should be determined by the end user.

应用	Ab评论	说明
ELISA		1/20000.
WB		1/500 - 1/1000. Detects a band of approximately 63 kDa (predicted molecular weight: 63 kDa).

靶标

功能	Involved in the initiation of DNA replication. Also participates in checkpoint controls that ensure DNA replication is completed before mitosis is initiated.
序列相似性	Belongs to the CDC6/cdc18 family.
细胞定位	Nucleus. Cytoplasm. The protein is nuclear in G1 and cytoplasmic in S-phase cells.

图片



All lanes : Anti-Cdc6 antibody (ab64880) at 1/500 dilution

Lane 1 : extracts from K562 cells, (5-30µg total protein).

Lane 2 : extracts from K562 cells, (5-30µg total protein) and 5-10µg of the immunising peptide.

Predicted band size : 63 kDa

Observed band size : 63 kDa

Please note: All products are "FOR RESEARCH USE ONLY AND ARE NOT INTENDED FOR DIAGNOSTIC OR THERAPEUTIC USE"

Our Abpromise to you: Quality guaranteed and expert technical support

- Replacement or refund for products not performing as stated on the datasheet
- Valid for 12 months from date of delivery
- Response to your inquiry within 24 hours
- We provide support in Chinese, English, French, German, Japanese and Spanish
- Extensive multi-media technical resources to help you
- We investigate all quality concerns to ensure our products perform to the highest standards

If the product does not perform as described on this datasheet, we will offer a refund or replacement. For full details of the Abpromise, please visit <http://www.abcam.cn/abpromise> or contact our technical team.

Terms and conditions

- Guarantee only valid for products bought direct from Abcam or one of our authorized distributors