


Product datasheet

Anti-CD19 antibody ab63534

1 References 1 图像

概述

产品名称	Anti-CD19抗体
描述	兔多克隆抗体to CD19
宿主	Rabbit
特异性	This antibody detects endogenous levels of total CD19 protein.
经测试应用	适用于: WB, ELISA
种属反应性	与反应: Human 预测可用于: Mouse 
免疫原	Synthesized non-phosphopeptide derived from human CD19 around the phosphorylation site of tyrosine 531 (D-S-Y ^P -E-N).
阳性对照	Extracts from COS7 cells

性能

形式	Liquid
存放说明	Shipped at 4°C. Store at -20°C. Stable for 12 months at -20°C.
存储溶液	Preservative: 0.02% Sodium Azide Constituents: 50% Glycerol, PBS (without Mg ²⁺ and Ca ²⁺), 150mM Sodium chloride, pH 7.4
纯度	Immunogen affinity purified
克隆	多克隆
同种型	IgG

应用

Our [Abpromise guarantee](#) covers the use of **ab63534** in the following tested applications.

The application notes include recommended starting dilutions; optimal dilutions/concentrations should be determined by the end user.

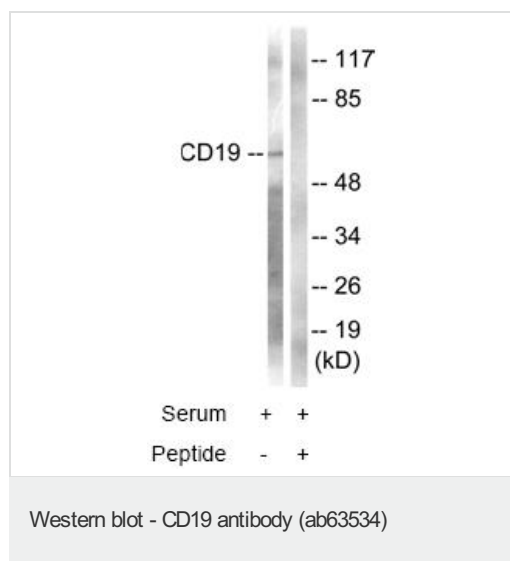
应用	Ab评论	说明
WB		1/500 - 1/1000. Detects a band of approximately 61 kDa (predicted molecular weight: 61 kDa).

应用	Ab评论	说明
ELISA		1/40000.

靶标

功能	Assembles with the antigen receptor of B lymphocytes in order to decrease the threshold for antigen receptor-dependent stimulation.
疾病相关	Defects in CD19 are the cause of immunodeficiency common variable type 3 (CVID3) [MIM:613493]; also called antibody deficiency due to CD19 defect. CVID3 is a primary immunodeficiency characterized by antibody deficiency, hypogammaglobulinemia, recurrent bacterial infections and an inability to mount an antibody response to antigen. The defect results from a failure of B-cell differentiation and impaired secretion of immunoglobulins; the numbers of circulating B cells is usually in the normal range, but can be low.
序列相似性	Contains 2 Ig-like C2-type (immunoglobulin-like) domains.
翻译后修饰	Phosphorylated on serine and threonine upon DNA damage, probably by ATM or ATR. Phosphorylated on tyrosine following B-cell activation.
细胞定位	Membrane.

图片



All lanes : Anti-CD19 antibody (ab63534) at 1/500 dilution

Lane 1 : Extracts from COS7 cells (5ug-30ug of total protein), treated with Serum (10%, 30mins), without immunising peptide

Lane 2 : Extracts from COS7 cells (5ug-30ug of total protein), treated with Serum (10%, 30mins), with immunising peptide (5-10ug)

Predicted band size: 61 kDa

Observed band size: 61 kDa

Please note: All products are "FOR RESEARCH USE ONLY AND ARE NOT INTENDED FOR DIAGNOSTIC OR THERAPEUTIC USE"

Our Abpromise to you: Quality guaranteed and expert technical support

- Replacement or refund for products not performing as stated on the datasheet
- Valid for 12 months from date of delivery

- Response to your inquiry within 24 hours
- We provide support in Chinese, English, French, German, Japanese and Spanish
- Extensive multi-media technical resources to help you
- We investigate all quality concerns to ensure our products perform to the highest standards

If the product does not perform as described on this datasheet, we will offer a refund or replacement. For full details of the Abpromise, please visit <http://www.abcam.cn/abpromise> or contact our technical team.

Terms and conditions

- Guarantee only valid for products bought direct from Abcam or one of our authorized distributors