


Product datasheet

Anti-Met (c-Met) antibody ab63347

1 References 2 图像

概述

产品名称	Anti-Met (c-Met)抗体
描述	兔多克隆抗体to Met (c-Met)
宿主	Rabbit
特异性	ab63347 detects endogenous levels of total Met (c-Met) protein.
经测试应用	适用于: ELISA, ICC/IF, WB
种属反应性	与反应: Human 预测可用于: Mouse, Rat 
免疫原	Synthetic non phosphopeptide derived from human Met (c-Met) around the phosphorylation site of tyrosine 1003 (V-D-Y ^P -R-A).
阳性对照	WB: HepG2 cell extracts. ICC/IF: A549 cells.

性能

形式	Liquid
存放说明	Shipped at 4°C. Upon delivery aliquot and store at -20°C. Avoid freeze / thaw cycles.
存储溶液	Preservative: 0.02% Sodium Azide Constituents: 50% Glycerol, PBS (without Mg ²⁺ and Ca ²⁺), 150mM Sodium chloride, pH 7.4
纯度	Immunogen affinity purified
纯化说明	ab63347 was affinity purified from rabbit antiserum by affinity chromatography using epitope specific immunogen.
克隆	多克隆
同种型	IgG

应用

Our [Abpromise guarantee](#) covers the use of **ab63347** in the following tested applications.

The application notes include recommended starting dilutions; optimal dilutions/concentrations should be determined by the end user.

应用	Ab评论	说明
ELISA		1/5000.
ICC/IF		1/500 - 1/1000.
WB		1/500 - 1/1000. Predicted molecular weight: 156 kDa.

靶标

功能

Receptor for hepatocyte growth factor and scatter factor. Has a tyrosine-protein kinase activity. Functions in cell proliferation, scattering, morphogenesis and survival.

疾病相关

Note=Activation of MET after rearrangement with the TPR gene produces an oncogenic protein. Note=Defects in MET may be associated with gastric cancer.

Defects in MET are a cause of hepatocellular carcinoma (HCC) [MIM:114550].

Defects in MET are a cause of renal cell carcinoma papillary (RCCP) [MIM:605074]. It is a subtype of renal cell carcinoma tending to show a tubulo-papillary architecture formed by numerous, irregular, finger-like projections of connective tissue. Renal cell carcinoma is a heterogeneous group of sporadic or hereditary carcinoma derived from cells of the proximal renal tubular epithelium. It is subclassified into common renal cell carcinoma (clear cell, non-papillary carcinoma), papillary renal cell carcinoma, chromophobe renal cell carcinoma, collecting duct carcinoma with medullary carcinoma of the kidney, and unclassified renal cell carcinoma.

Note=A common allele in the promoter region of the MET shows genetic association with susceptibility to autism in some families. Functional assays indicate a decrease in MET promoter activity and altered binding of specific transcription factor complexes.

Note=MET activating mutations may be involved in the development of a highly malignant, metastatic syndrome known as cancer of unknown primary origin (CUP) or primary occult malignancy. Systemic neoplastic spread is generally a late event in cancer progression. However, in some instances, distant dissemination arises at a very early stage, so that metastases reach clinical relevance before primary lesions. Sometimes, the primary lesions cannot be identified in spite of the progresses in the diagnosis of malignancies.

序列相似性

Belongs to the protein kinase superfamily. Tyr protein kinase family.

Contains 3 IPT/TIG domains.

Contains 1 protein kinase domain.

Contains 1 Sema domain.

结构域

The kinase domain is involved in SPSB1 binding.

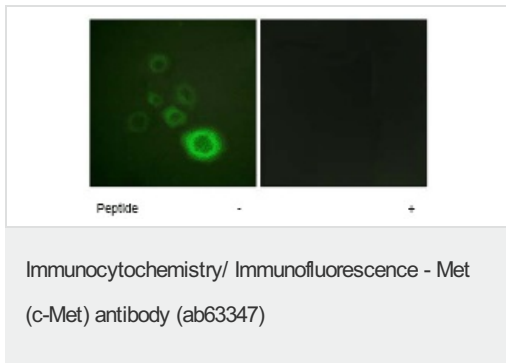
翻译后修饰

Dephosphorylated by PTPRJ at Tyr-1349 and Tyr-1365.

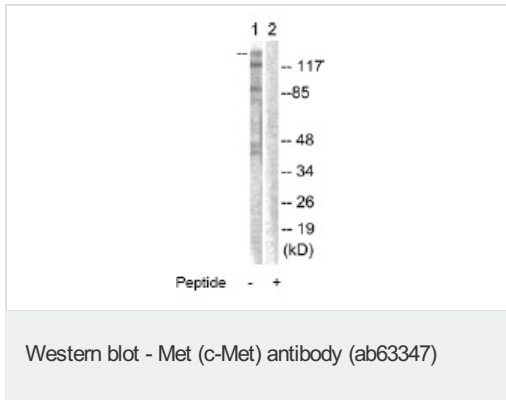
细胞定位

Membrane.

图片



ab63347, at 1/500 dilution, staining Met (c-Met) in A549 cells by Immunofluorescence, in the absence (left image) or presence (right image) of the immunising peptide.



All lanes : Anti-Met (c-Met) antibody (ab63347) at 1/500 dilution

Lane 1 : HepG2 cell extracts

Lane 2 : HepG2 cell extracts with immunising peptide at 10 µg

Lysates/proteins at 30 µg per lane.

Predicted band size: 156 kDa

Observed band size: 156 kDa

Additional bands at: 90 kDa. We are unsure as to the identity of these extra bands.

Please note: All products are "FOR RESEARCH USE ONLY AND ARE NOT INTENDED FOR DIAGNOSTIC OR THERAPEUTIC USE"

Our Abpromise to you: Quality guaranteed and expert technical support

- Replacement or refund for products not performing as stated on the datasheet
- Valid for 12 months from date of delivery
- Response to your inquiry within 24 hours
- We provide support in Chinese, English, French, German, Japanese and Spanish
- Extensive multi-media technical resources to help you
- We investigate all quality concerns to ensure our products perform to the highest standards

If the product does not perform as described on this datasheet, we will offer a refund or replacement. For full details of the Abpromise, please visit <http://www.abcam.cn/abpromise> or contact our technical team.

Terms and conditions

- Guarantee only valid for products bought direct from Abcam or one of our authorized distributors