

Product datasheet

Anti-Proteasome 20S alpha 5 antibody ab63075

2 图像

概述

产品名称	Anti-Proteasome 20S alpha 5抗体
描述	兔多克隆抗体to Proteasome 20S alpha 5
宿主	Rabbit
经测试应用	适用于: WB, ELISA, IHC-P
种属反应性	与反应: Human
免疫原	Synthetic peptide corresponding to Human Proteasome 20S alpha 5 (N terminal) conjugated to Keyhole Limpet Haemocyanin (KLH). Database link: <a href="#">P28066</a>
阳性对照	Human hepatocarcinoma tissue. 293 cell lysates transiently transfected with the Proteasome 20S alpha 5 gene.

性能

形式	Liquid
存放说明	Shipped at 4°C. Store at +4°C short term (1-2 weeks). Upon delivery aliquot. Store at -20°C long term.
存储溶液	Preservative: 0.09% Sodium Azide Constituents: PBS
纯度	Protein A purified
纯化说明	ab63075 is purified through a protein A column, eluted with high and low pH buffers and neutralized immediately, followed by dialysis against PBS.
克隆	多克隆
同种型	IgG

应用

Our [Abpromise guarantee](#) covers the use of **ab63075** in the following tested applications.

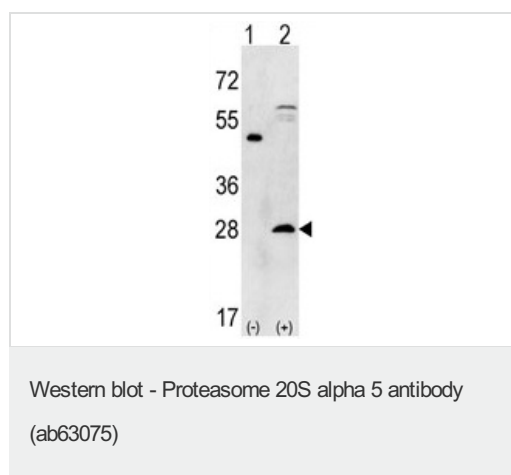
The application notes include recommended starting dilutions; optimal dilutions/concentrations should be determined by the end user.

应用	Ab评论	说明
WB		1/50 - 1/100. Detects a band of approximately 26 kDa (predicted molecular weight: 26 kDa).
ELISA		1/1000.
IHC-P		1/50.

## 靶标

<b>功能</b>	The proteasome is a multicatalytic proteinase complex which is characterized by its ability to cleave peptides with Arg, Phe, Tyr, Leu, and Glu adjacent to the leaving group at neutral or slightly basic pH. The proteasome has an ATP-dependent proteolytic activity.
<b>组织特异性</b>	Expressed in fetal brain (at protein level).
<b>序列相似性</b>	Belongs to the peptidase T1A family.
<b>细胞定位</b>	Cytoplasm. Nucleus.

## 图片



**All lanes** : Anti-Proteasome 20S alpha 5 antibody (ab63075) at 1/50 dilution

**Lane 1** : 293 cell lysates, non transfected

**Lane 2** : 293 cell lysates, transiently transfected with the Proteasome 20S alpha 5 gene

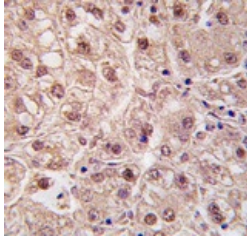
Lysates/proteins at 2 µg per lane.

**Predicted band size:** 26 kDa

**Observed band size:** 26 kDa

**Additional bands at:** 60 kDa. We are unsure as to the identity of these extra bands.

There is a band at 50 kDa in the non transfected 293 cell lysate. We are unsure as to the identity of this band.



Immunohistochemistry (Formalin/PFA-fixed paraffin-embedded sections) - Proteasome 20S alpha 5 antibody (ab63075)

ab63075 at 1/50 dilution, staining Proteasome 20S alpha 5 in human hepatocarcinoma by Immunohistochemistry using formalin-fixed, paraffin-embedded tissue. ab63075 was peroxidase-conjugated to the secondary antibody, followed by DAB staining.

**Please note:** All products are "FOR RESEARCH USE ONLY AND ARE NOT INTENDED FOR DIAGNOSTIC OR THERAPEUTIC USE"

### **Our Abpromise to you: Quality guaranteed and expert technical support**

- Replacement or refund for products not performing as stated on the datasheet
- Valid for 12 months from date of delivery
- Response to your inquiry within 24 hours
- We provide support in Chinese, English, French, German, Japanese and Spanish
- Extensive multi-media technical resources to help you
- We investigate all quality concerns to ensure our products perform to the highest standards

If the product does not perform as described on this datasheet, we will offer a refund or replacement. For full details of the Abpromise, please visit <http://www.abcam.cn/abpromise> or contact our technical team.

### **Terms and conditions**

- Guarantee only valid for products bought direct from Abcam or one of our authorized distributors