

Product datasheet

Anti-Synaptophysin antibody [SYP02] ab6245

1 References 1 图像

概述

产品名称	Anti-Synaptophysin抗体[SYP02]
描述	小鼠单克隆抗体[SYP02] to Synaptophysin
宿主	Mouse
特异性	This antibody reacts with neuroendocrine neoplasms of neural as well as epithelial types. This antibody is specific to a 38 kD protein.
经测试应用	适用于: IHC-P, IHC-Fr
种属反应性	与反应: Human
免疫原	BALB/C mice were injected with a synthetic peptide encoding a region near the c-terminal end of the synaptophysin protein.
阳性对照	Pancreas.

性能

形式	Liquid
存放说明	Shipped at 4°C. Store at +4°C short term (1-2 weeks). Store at -20°C or -80°C. Avoid freeze / thaw cycle.
存储溶液	Preservative: 0.05% Sodium Azide Constituents: 1% BSA, Tissue culture supernatant
纯度	Protein A purified
克隆	单克隆
克隆编号	SYP02
同种型	IgG1

应用

Our [Abpromise guarantee](#) covers the use of **ab6245** in the following tested applications.

The application notes include recommended starting dilutions; optimal dilutions/concentrations should be determined by the end user.

应用	Ab评论	说明
----	------	----

IHC-P

IHC-Fr

应用说明

IHC-P: Use at an assay dependent dilution. Formalin fixed paraffin embedded tissue sections require high temperature antigen unmasking with 10 mM citrate buffer, pH 6.0 prior to immunostaining.

IHC-Fr: Use at an assay dependent dilution.

Not tested in other applications.

Optimal dilutions/concentrations should be determined by the end user.

靶标

功能

Possibly involved in structural functions as organizing other membrane components or in targeting the vesicles to the plasma membrane. Involved in the regulation of short-term and long-term synaptic plasticity.

组织特异性

Characteristic of a type of small (30-80 nm) neurosecretory vesicles, including presynaptic vesicles, but also vesicles of various neuroendocrine cells of both neuronal and epithelial phenotype.

疾病相关

Mental retardation, X-linked, SYP-related

序列相似性

Belongs to the synaptophysin/synaptobrevin family.

Contains 1 MARVEL domain.

结构域

The calcium-binding activity is thought to be localized in the cytoplasmic tail of the protein.

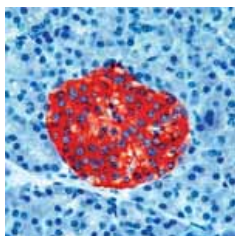
翻译后修饰

Ubiquitinated; mediated by SIAH1 or SIAH2 and leading to its subsequent proteasomal degradation.

细胞定位

Cytoplasmic vesicle, secretory vesicle, synaptic vesicle membrane. Cell junction, synapse, synaptosome.

图片



ab6245 staining human pancreas by IHC-P.

Immunohistochemistry (Formalin/PFA-fixed paraffin-embedded sections) - Anti-Synaptophysin antibody [SYP02] (ab6245)

Please note: All products are "FOR RESEARCH USE ONLY AND ARE NOT INTENDED FOR DIAGNOSTIC OR THERAPEUTIC USE"

Our Abpromise to you: Quality guaranteed and expert technical support

- Replacement or refund for products not performing as stated on the datasheet
- Valid for 12 months from date of delivery
- Response to your inquiry within 24 hours

- We provide support in Chinese, English, French, German, Japanese and Spanish
- Extensive multi-media technical resources to help you
- We investigate all quality concerns to ensure our products perform to the highest standards

If the product does not perform as described on this datasheet, we will offer a refund or replacement. For full details of the Abpromise, please visit <http://www.abcam.cn/abpromise> or contact our technical team.

Terms and conditions

- Guarantee only valid for products bought direct from Abcam or one of our authorized distributors