


Product datasheet

# Anti-Caspase-2 (phospho S157) antibody ab62441

1 图像

概述

产品名称	Anti-Caspase-2 (phospho S157)抗体
描述	兔多克隆抗体to Caspase-2 (phospho S157)
宿主	Rabbit
特异性	ab62441 detects endogenous levels of Caspase-2 only when phosphorylated at serine 157.
经测试应用	适用于: IHC-P, ELISA
种属反应性	与反应: Human 预测可用于: Mouse 
免疫原	Synthetic peptide corresponding to Human Caspase-2. Database link: <a href="#">P42575</a>
阳性对照	Human lung carcinoma tissue.

性能

形式	Liquid
存放说明	Shipped at 4°C. Store at +4°C short term (1-2 weeks). Upon delivery aliquot. Store at -20°C. Avoid freeze / thaw cycle.
存储溶液	Preservative: 0.02% Sodium Azide Constituents: 50% Glycerol, PBS (without Mg <sup>2+</sup> and Ca <sup>2+</sup> ), 150mM Sodium chloride, pH 7.4
纯度	Protein A purified
纯化说明	ab62441 was affinity purified from rabbit antiserum by affinity chromatography using epitope specific phosphopeptide. The antibody against non phosphopeptide was removed by chromatography using non phosphopeptide corresponding to the phosphorylation site.
克隆	多克隆
同种型	IgG

应用

Our [Abpromise guarantee](#) covers the use of **ab62441** in the following tested applications.

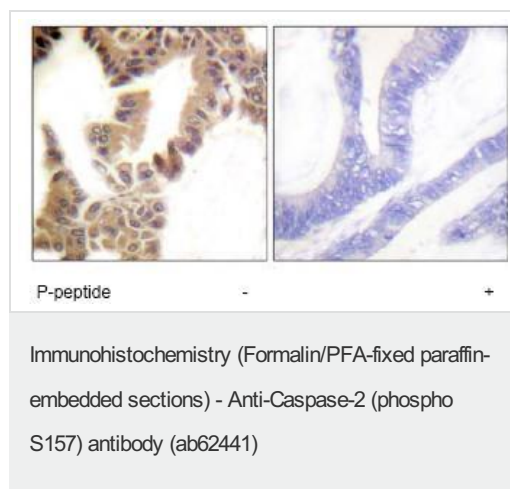
The application notes include recommended starting dilutions; optimal dilutions/concentrations should be determined by the end user.

应用	Ab评论	说明
IHC-P		1/50 - 1/100.
ELISA		1/10000.

## 靶标

<b>功能</b>	Involved in the activation cascade of caspases responsible for apoptosis execution. Might function by either activating some proteins required for cell death or inactivating proteins necessary for cell survival.
<b>组织特异性</b>	Expressed at higher levels in the embryonic lung, liver and kidney than in the heart and brain. In adults, higher level expression is seen in the placenta, lung, kidney, and pancreas than in the heart, brain, liver and skeletal muscle.
<b>序列相似性</b>	Belongs to the peptidase C14A family. Contains 1 CARD domain.
<b>翻译后修饰</b>	The mature protease can process its own propeptide, but not that of other caspases.

## 图片



Immunofluorescence analysis of Caspase-2 in human lung carcinoma tissue (paraffin section), using ab62441 (1:50); in the presence or absence of phosphopeptide.

**Please note:** All products are "FOR RESEARCH USE ONLY AND ARE NOT INTENDED FOR DIAGNOSTIC OR THERAPEUTIC USE"

## Our Abpromise to you: Quality guaranteed and expert technical support

- Replacement or refund for products not performing as stated on the datasheet
- Valid for 12 months from date of delivery
- Response to your inquiry within 24 hours
- We provide support in Chinese, English, French, German, Japanese and Spanish
- Extensive multi-media technical resources to help you
- We investigate all quality concerns to ensure our products perform to the highest standards

If the product does not perform as described on this datasheet, we will offer a refund or replacement. For full details of the Abpromise, please visit <http://www.abcam.cn/abpromise> or contact our technical team.

## Terms and conditions

---

- Guarantee only valid for products bought direct from Abcam or one of our authorized distributors