


Product datasheet

Anti-Caspase-1 (phospho S376) antibody ab61794

2 图像

概述

<b>产品名称</b>	Anti-Caspase-1 (phospho S376)抗体
<b>描述</b>	兔多克隆抗体to Caspase-1 (phospho S376)
<b>宿主</b>	Rabbit
<b>特异性</b>	ab61794 detects endogenous levels of Caspase-1 only when phosphorylated at serine 376.
<b>经测试应用</b>	<b>适用于:</b> ELISA, IHC-P, WB
<b>种属反应性</b>	<b>与反应:</b> Human <b>预测可用于:</b> Mouse 
<b>免疫原</b>	Synthetic peptide corresponding to Human Caspase-1. Database link: <a href="#">P29466</a>
<b>阳性对照</b>	Human brain tissue and 293 cell extracts.
<b>常规说明</b>	The amino acid range of this immunogen is aa350-400 of human Caspase-1 with Acc# P29466 ( <a href="http://www.uniprot.org/uniprot/P29466">http://www.uniprot.org/uniprot/P29466</a> ). This antibody binds to the Caspase-1 subunit p10 region. It binds to isoforms alpha, beta, gamma, delta, and epsilon.

性能

<b>形式</b>	Liquid
<b>存放说明</b>	Shipped at 4°C. Store at +4°C short term (1-2 weeks). Upon delivery aliquot. Store at -20°C. Avoid freeze / thaw cycle.
<b>存储溶液</b>	Preservative: 0.02% Sodium Azide Constituents: 50% Glycerol, PBS (without Mg <sup>2+</sup> and Ca <sup>2+</sup> ), 150mM Sodium chloride, pH 7.4
<b>纯度</b>	Protein A purified
<b>纯化说明</b>	ab61794 was affinity-purified from rabbit antiserum by affinity-chromatography using pitope-specific phosphopeptide. The antibody against non-phosphopeptide was removed by chromatography using non-phosphopeptide corresponding to the phosphorylation site.
<b>克隆</b>	多克隆
<b>同种型</b>	IgG

应用

Our [Abpromise guarantee](#) covers the use of **ab61794** in the following tested applications.

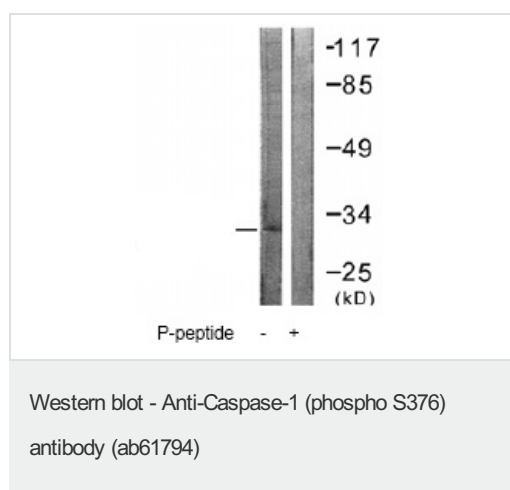
The application notes include recommended starting dilutions; optimal dilutions/concentrations should be determined by the end user.

应用	Ab评论	说明
ELISA		1/20000.
IHC-P		1/50 - 1/100.
WB		1/500 - 1/1000. Detects a band of approximately 30 kDa (predicted molecular weight: 45 kDa).

## 靶标

<b>功能</b>	Thiol protease that cleaves IL-1 beta between an Asp and an Ala, releasing the mature cytokine which is involved in a variety of inflammatory processes. Important for defense against pathogens. Cleaves and activates sterol regulatory element binding proteins (SREBPs). Can also promote apoptosis.
<b>组织特异性</b>	Expressed in larger amounts in spleen and lung. Detected in liver, heart, small intestine, colon, thymus, prostate, skeletal muscle, peripheral blood leukocytes, kidney and testis. No expression in the brain.
<b>序列相似性</b>	Belongs to the peptidase C14A family. Contains 1 CARD domain.
<b>翻译后修饰</b>	The two subunits are derived from the precursor sequence by an autocatalytic mechanism.
<b>细胞定位</b>	Cytoplasm.

## 图片



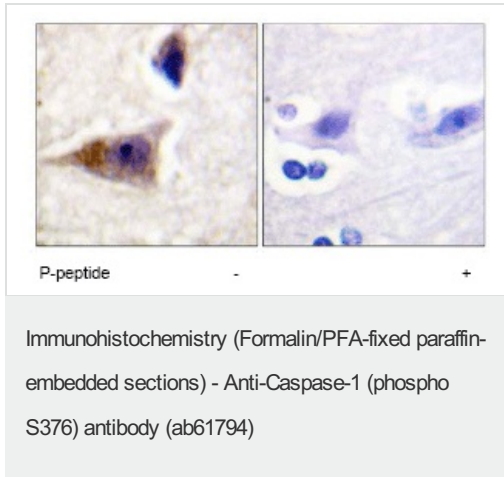
**All lanes :** Anti-Caspase-1 (phospho S376) antibody (ab61794) at 1/500 dilution

**Lane 1 :** 293 cell extracts

**Lane 2 :** 293 cell extracts with immunising peptide

**Predicted band size:** 45 kDa

**Observed band size:** 30 kDa



ab61794 at 1:50 - 1:100 dilution staining  
Caspase-1 in human brain by  
Immunohistochemistry, Paraffin-embedded  
tissue, in the absence or presence of the  
immunising peptide.

**Please note:** All products are "FOR RESEARCH USE ONLY AND ARE NOT INTENDED FOR DIAGNOSTIC OR THERAPEUTIC USE"

### Our Abpromise to you: Quality guaranteed and expert technical support

- Replacement or refund for products not performing as stated on the datasheet
- Valid for 12 months from date of delivery
- Response to your inquiry within 24 hours
- We provide support in Chinese, English, French, German, Japanese and Spanish
- Extensive multi-media technical resources to help you
- We investigate all quality concerns to ensure our products perform to the highest standards

If the product does not perform as described on this datasheet, we will offer a refund or replacement. For full details of the Abpromise, please visit <http://www.abcam.cn/abpromise> or contact our technical team.

### Terms and conditions

- Guarantee only valid for products bought direct from Abcam or one of our authorized distributors