

Product datasheet

Anti-NRG4 antibody ab60090

1 图像

概述

产品名称	Anti-NRG4抗体
描述	兔多克隆抗体to NRG4
宿主	Rabbit
经测试应用	适用于: ELISA, IHC-P
种属反应性	与反应: Human
免疫原	A mixture of 2 KLH conjugated synthetic peptides selected from center and C terminal region of human NRG4.
阳性对照	IHC-P: Human cancer tissue.

性能

形式	Liquid
存放说明	Shipped at 4°C. Store at +4°C short term (1-2 weeks). Upon delivery aliquot. Store at -20°C or -80°C. Avoid freeze / thaw cycle.
存储溶液	Preservative: 0.09% Sodium Azide Constituents: PBS
纯度	Protein G purified
纯化说明	This antibody is purified through a protein G column and eluted out with both high and low pH buffers and neutralized immediately after elution then followed by dialysis against PBS.
克隆	多克隆
同种型	IgG

应用

Our [Abpromise guarantee](#) covers the use of **ab60090** in the following tested applications.

The application notes include recommended starting dilutions; optimal dilutions/concentrations should be determined by the end user.

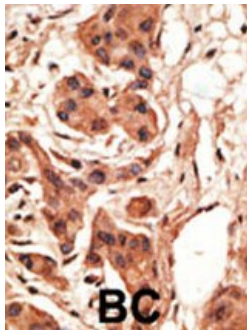
应用	Ab评论	说明
ELISA		1/1000.

应用	Ab评论	说明
IHC-P		1/20 - 1/100.

靶标

功能	Low affinity ligand for the ERBB4 tyrosine kinase receptor. Concomitantly recruits ERBB1 and ERBB2 coreceptors, resulting in ligand-stimulated tyrosine phosphorylation and activation of the ERBB receptors. Does not bind to the ERBB1, ERBB2 and ERBB3 receptors.
序列相似性	Belongs to the neuregulin family. Contains 1 EGF-like domain.
结构域	The cytoplasmic domain may be involved in the regulation of trafficking and proteolytic processing. Regulation of the proteolytic processing involves initial intracellular domain dimerization. ERBB receptor binding is elicited entirely by the EGF-like domain.
翻译后修饰	Proteolytic cleavage close to the plasma membrane on the external face leads to the release of the soluble growth factor form. Extensive glycosylation precedes the proteolytic cleavage.
细胞定位	Secreted and Cell membrane. Does not seem to be active.

图片



Ab60090 (1/20 dilution) staining NRG4 in formalin fixed, paraffin embedded human cancer tissue sections by immunohistochemistry. ab60090 was peroxidase conjugated to the secondary antibody, followed by AEC staining. BC = breast carcinoma.

Immunohistochemistry (Formalin/PFA-fixed paraffin-embedded sections) - NRG4 antibody (ab60090)

Please note: All products are "FOR RESEARCH USE ONLY AND ARE NOT INTENDED FOR DIAGNOSTIC OR THERAPEUTIC USE"

Our Abpromise to you: Quality guaranteed and expert technical support

- Replacement or refund for products not performing as stated on the datasheet
- Valid for 12 months from date of delivery
- Response to your inquiry within 24 hours
- We provide support in Chinese, English, French, German, Japanese and Spanish
- Extensive multi-media technical resources to help you

- We investigate all quality concerns to ensure our products perform to the highest standards

If the product does not perform as described on this datasheet, we will offer a refund or replacement. For full details of the Abpromise, please visit <http://www.abcam.cn/abpromise> or contact our technical team.

Terms and conditions

- Guarantee only valid for products bought direct from Abcam or one of our authorized distributors