


Product datasheet

Anti-PAK2 (phospho S20) antibody ab59359

1 References 2 图像

概述

产品名称	Anti-PAK2 (phospho S20)抗体
描述	兔多克隆抗体to PAK2 (phospho S20)
宿主	Rabbit
特异性	ab59359 detects endogenous levels of PAK2 only when phosphorylated at serine 20.
经测试应用	适用于: WB, ELISA, IHC-P
种属反应性	与反应: Human 预测可用于: Mouse, Rat 
免疫原	Synthesized phosphopeptide derived from human PAK2 around the phosphorylation site of serine 20 (MSS <sup>P</sup> TI).
阳性对照	293 whole cell lysate (WB) Human colon carcinoma tissue (IHC)
常规说明	Store at -20°C for 1 year

性能

形式	Liquid
存放说明	Shipped at 4°C. Upon delivery aliquot and store at -20°C. Avoid freeze / thaw cycles.
存储溶液	Preservative: 0.02% Sodium Azide Constituents: 50% Glycerol, PBS (without Mg <sup>+2</sup> and Ca <sup>+2</sup> ), 150mM Sodium chloride, pH 7.4
纯度	Immunogen affinity purified
纯化说明	Purified from rabbit antiserum by affinity chromatography using epitope specific phosphopeptide. The antibody against non phosphopeptide was removed by chromatography using non phosphopeptide corresponding to the phosphorylation site.
克隆	多克隆
同种型	IgG

应用

Our [Abpromise guarantee](#) covers the use of **ab59359** in the following tested applications.

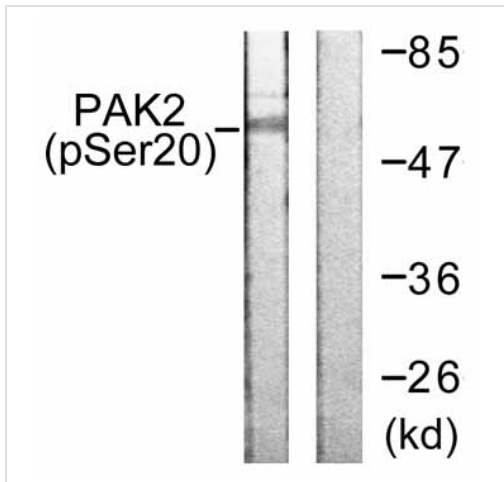
The application notes include recommended starting dilutions; optimal dilutions/concentrations should be determined by the end user.

应用	Ab评论	说明
WB		1/500 - 1/1000. Detects a band of approximately 58 kDa.
ELISA		1/40000.
IHC-P		Use at an assay dependent concentration.

## 靶标

<b>功能</b>	The activated kinase acts on a variety of targets. Phosphorylates ribosomal protein S6, histone H4 and myelin basic protein. Full length PAK 2 stimulates cell survival and cell growth. The process is, at least in part, mediated by phosphorylation and inhibition of pro-apoptotic BAD. Caspase-activated PAK-2p34 is involved in cell death response, probably involving the JNK signaling pathway. Cleaved PAK-2p34 seems to have a higher activity than the CDC42-activated form.
<b>组织特异性</b>	Ubiquitously expressed. Higher levels seen in skeletal muscle, ovary, thymus and spleen.
<b>序列相似性</b>	Belongs to the protein kinase superfamily. STE Ser/Thr protein kinase family. STE20 subfamily. Contains 1 CRIB domain. Contains 1 protein kinase domain.
<b>翻译后修饰</b>	Full length PAK 2 is autophosphorylated when activated by CDC42/p21. Following cleavage, both peptides, PAK-2p27 and PAK-2p34, become highly autophosphorylated, with PAK-2p27 being phosphorylated on serine and PAK-2p34 on threonine residues, respectively. Autophosphorylation of PAK-2p27 can occur in the absence of any effectors and is dependent on phosphorylation of Thr-402, because PAK-2p27 is acting as an exogenous substrate. During apoptosis proteolytically cleaved by caspase-3 or caspase-3-like proteases to yield active PAK-2p34. Ubiquitinated, leading to its proteasomal degradation. PAK-2p34 is myristoylated.
<b>细胞定位</b>	Cytoplasm and Nucleus. Cytoplasm > perinuclear region. Membrane. Interaction with ARHGAP10 probably changes PAK-2p34 location to cytoplasmic perinuclear region. Myristoylation changes PAK-2p34 location to the membrane.

## 图片



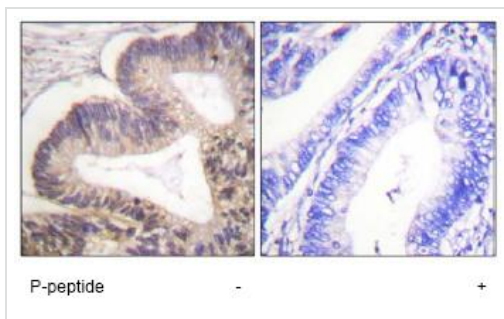
Western blot - PAK2 (phospho S20) antibody (ab59359)

**All lanes :** Anti-PAK2 (phospho S20) antibody (ab59359) at 1/500 dilution

**Lane 1 :** Extracts from 293 cells, treated with Sorbitol (0.4M, 30min) with no immunizing peptide

**Lane 2 :** Extracts from 293 cells, treated with Sorbitol (0.4M, 30mins) with immunizing peptide

**Observed band size:** 58 kDa



Immunohistochemistry (Paraffin-embedded sections) - PAK2 (phospho S20) antibody (ab59359)

ab59359, at a 1/50 dilution, staining human PAK2 (phospho S20) in colon carcinoma, using Immunohistochemistry, Paraffin embedded tissue, in the absence of the immunizing peptide (left image) and in the presence of the immunizing peptide (right image).

**Please note:** All products are "FOR RESEARCH USE ONLY AND ARE NOT INTENDED FOR DIAGNOSTIC OR THERAPEUTIC USE"

### Our Abpromise to you: Quality guaranteed and expert technical support

- Replacement or refund for products not performing as stated on the datasheet
- Valid for 12 months from date of delivery
- Response to your inquiry within 24 hours
- We provide support in Chinese, English, French, German, Japanese and Spanish
- Extensive multi-media technical resources to help you
- We investigate all quality concerns to ensure our products perform to the highest standards

If the product does not perform as described on this datasheet, we will offer a refund or replacement. For full details of the Abpromise, please visit <http://www.abcam.cn/abpromise> or contact our technical team.

### Terms and conditions

- Guarantee only valid for products bought direct from Abcam or one of our authorized distributors