

## Product datasheet

# Anti-Thymidine Kinase 1 antibody ab59271

★★★★★ 2 Abreviews 1 References 2 图像

### 概述

产品名称	Anti-Thymidine Kinase 1 抗体
描述	兔多克隆抗体 to Thymidine Kinase 1
宿主	Rabbit
特异性	ab59271 detects endogenous levels of total Thymidine Kinase protein.
经测试应用	适用于: WB, IHC-P, ELISA
种属反应性	与反应: Rat, Human 预测可用于: Mouse
免疫原	A synthesized non-phosphopeptide derived from human Thymidine Kinase around the phosphorylation site of serine 13.
阳性对照	Extracts from COLO205 cells; human breast carcinoma tissue.

### 性能

形式	Liquid
存放说明	Shipped at 4°C. Store at -20°C. Stable for 12 months at -20°C.
存储溶液	Preservative: 0.02% Sodium Azide Constituents: 50% Glycerol, PBS (without Mg <sup>2+</sup> and Ca <sup>2+</sup> ), 150mM Sodium chloride, pH 7.4
纯度	Immunogen affinity purified
克隆	多克隆
同种型	IgG

### 应用

Our [Abpromise guarantee](#) covers the use of **ab59271** in the following tested applications.

The application notes include recommended starting dilutions; optimal dilutions/concentrations should be determined by the end user.

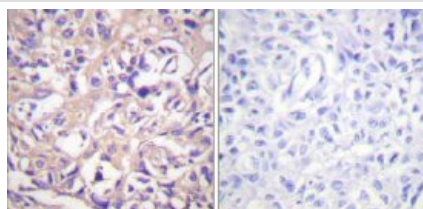
应用	Ab评论	说明
WB	★★★★★	1/500 - 1/1000. Detects a band of approximately 25 kDa (predicted molecular weight: 25 kDa).

应用	Ab评论	说明
IHC-P		Use at an assay dependent concentration.
ELISA		1/5000.

## 靶标

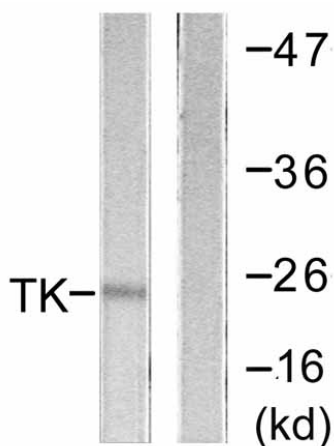
序列相似性	Belongs to the thymidine kinase family.
翻译后修饰	Phosphorylated on Ser-13 in mitosis.
细胞定位	Cytoplasm.

## 图片



Immunohistochemistry (Paraffin-embedded sections)  
- Thymidine Kinase antibody (ab59271)

Immunohistochemical analysis of paraffin-embedded human breast carcinoma tissue using ab59271 at a dilution of 1/50. Left hand image - without immunising peptide; right hand image - with immunising peptide.



Western blot - Thymidine Kinase antibody (ab59271)

**All lanes** : Anti-Thymidine Kinase 1 antibody (ab59271) at 1/500 dilution

**Lane 1** : extracts from COLO205 cells with no immunising peptide

**Lane 2** : extracts from COLO205 cells with immunising peptide

**Predicted band size:** 25 kDa

**Observed band size:** 25 kDa

**Please note:** All products are "FOR RESEARCH USE ONLY AND ARE NOT INTENDED FOR DIAGNOSTIC OR THERAPEUTIC USE"

## Our Abpromise to you: Quality guaranteed and expert technical support

- Replacement or refund for products not performing as stated on the datasheet

- Valid for 12 months from date of delivery
- Response to your inquiry within 24 hours
  
- We provide support in Chinese, English, French, German, Japanese and Spanish
- Extensive multi-media technical resources to help you
- We investigate all quality concerns to ensure our products perform to the highest standards

If the product does not perform as described on this datasheet, we will offer a refund or replacement. For full details of the Abpromise, please visit <http://www.abcam.cn/abpromise> or contact our technical team.

### **Terms and conditions**

---

- Guarantee only valid for products bought direct from Abcam or one of our authorized distributors