


Product datasheet

Anti-Rhodopsin antibody ab59260

2 References 1 图像

概述

产品名称	Anti-Rhodopsin抗体
描述	兔多克隆抗体to Rhodopsin
特异性	ab59260 detects endogenous levels of total Rhodopsin protein.
经测试应用	适用于: ELISA, IHC-P
种属反应性	与反应: Human 预测可用于: Mouse, Rat 
免疫原	Synthetic non-phosphopeptide derived from human Rhodopsin around the phosphorylation site of serine 334 (D-A-S <sup>P</sup> -A-T).
阳性对照	Human brain tissue.

性能

形式	Liquid
存放说明	Shipped at 4°C. Store at -20°C. Stable for 12 months at -20°C.
存储溶液	Preservative: 0.02% Sodium Azide Constituents: 50% Glycerol, PBS (without Mg <sup>2+</sup> and Ca <sup>2+</sup> ), 150mM Sodium chloride, pH 7.4
纯度	Immunogen affinity purified
纯化说明	ab59260 was affinity-purified from rabbit antiserum by affinity-chromatography using epitope-specific immunogen.
克隆	多克隆
同种型	IgG

应用

Our [Abpromise guarantee](#) covers the use of **ab59260** in the following tested applications.

The application notes include recommended starting dilutions; optimal dilutions/concentrations should be determined by the end user.

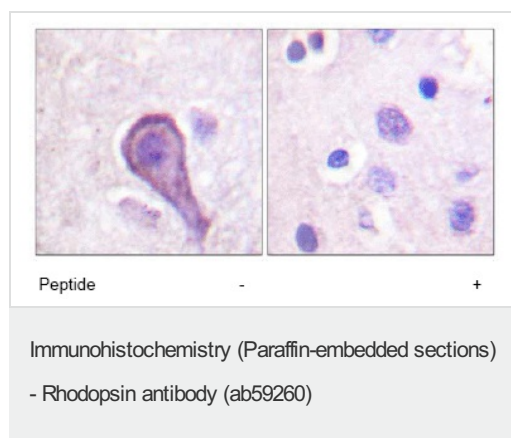
应用	Ab评论	说明
ELISA		1/5000.

应用	Ab评论	说明
IHC-P		Use at an assay dependent concentration.

## 靶标

功能	Photoreceptor required for image-forming vision at low light intensity. Required for photoreceptor cell viability after birth. Light-induced isomerization of 11-cis to all-trans retinal triggers a conformational change leading to G-protein activation and release of all-trans retinal.
组织特异性	Rod shaped photoreceptor cells which mediates vision in dim light.
疾病相关	Retinitis pigmentosa 4 Night blindness, congenital stationary, autosomal dominant 1
序列相似性	Belongs to the G-protein coupled receptor 1 family. Opsin subfamily.
翻译后修饰	Phosphorylated on some or all of the serine and threonine residues present in the C-terminal region. Contains one covalently linked retinal chromophore.
细胞定位	Membrane. Synthesized in the inner segment (IS) of rod photoreceptor cells before vectorial transport to the rod outer segment (OS) photosensory cilia.

## 图片



ab59260, at 1/50 dilution, staining Rhodopsin in paraffin embedded human brain tissue by Immunohistochemistry in the absence or presence of the immunising peptide.

**Please note:** All products are "FOR RESEARCH USE ONLY AND ARE NOT INTENDED FOR DIAGNOSTIC OR THERAPEUTIC USE"

## Our Abpromise to you: Quality guaranteed and expert technical support

- Replacement or refund for products not performing as stated on the datasheet
- Valid for 12 months from date of delivery
- Response to your inquiry within 24 hours
- We provide support in Chinese, English, French, German, Japanese and Spanish
- Extensive multi-media technical resources to help you
- We investigate all quality concerns to ensure our products perform to the highest standards

If the product does not perform as described on this datasheet, we will offer a refund or replacement. For full details of the Abpromise, please visit <http://www.abcam.cn/abpromise> or contact our technical team.

## Terms and conditions

---

- Guarantee only valid for products bought direct from Abcam or one of our authorized distributors