

Product datasheet

Anti-RIOK3 antibody ab57962

1 图像

概述

产品名称	Anti-RIOK3抗体
描述	小鼠单克隆抗体to RIOK3
经测试应用	适用于: WB
种属反应性	与反应: Human
免疫原	Recombinant full length protein, corresponding to amino acids 1-517 of Human RIOK3

性能

形式	Liquid
存放说明	Shipped at 4°C. Upon delivery aliquot and store at -20°C or -80°C. Avoid repeated freeze / thaw cycles.
存储溶液	Preservative: None PBS, pH 7.2
纯度	Protein G purified
克隆	单克隆
同种型	IgG1
轻链类型	kappa

应用

Our [Abpromise guarantee](#) covers the use of **ab57962** in the following tested applications.

The application notes include recommended starting dilutions; optimal dilutions/concentrations should be determined by the end user.

应用	Ab评论	说明
----	------	----

WB

应用说明 WB: Use at a concentration of 1-5 µg/ml.

Not yet tested in other applications.
Optimal dilutions/concentrations should be determined by the end user.

靶标

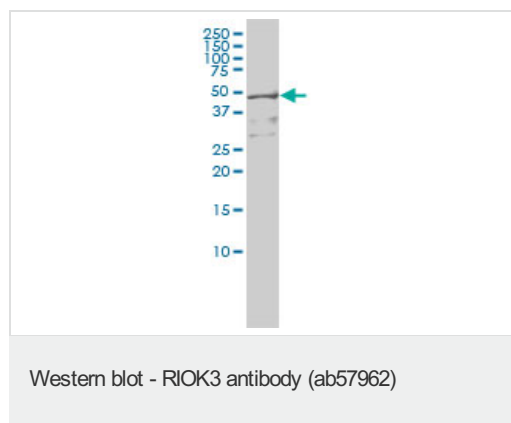
组织特异性

Widely expressed.

序列相似性

Belongs to the protein kinase superfamily. RIO-type Ser/Thr kinase family.
Contains 1 protein kinase domain.

图片



Predicted band size : 59 kDa

RIOK3 antibody (ab57962) at 1 ug/lane +
HeLa cell lysate at 25ug/lane.

Please note: All products are "FOR RESEARCH USE ONLY AND ARE NOT INTENDED FOR DIAGNOSTIC OR THERAPEUTIC USE"

Our Abpromise to you: Quality guaranteed and expert technical support

- Replacement or refund for products not performing as stated on the datasheet
- Valid for 12 months from date of delivery
- Response to your inquiry within 24 hours
- We provide support in Chinese, English, French, German, Japanese and Spanish
- Extensive multi-media technical resources to help you
- We investigate all quality concerns to ensure our products perform to the highest standards

If the product does not perform as described on this datasheet, we will offer a refund or replacement. For full details of the Abpromise, please visit <http://www.abcam.cn/abpromise> or contact our technical team.

Terms and conditions

- Guarantee only valid for products bought direct from Abcam or one of our authorized distributors