

Product datasheet

Anti-RPS27A antibody ab57646

2 图像

概述

产品名称	Anti-RPS27A抗体
描述	小鼠单克隆抗体to RPS27A
经测试应用	适用于: WB, Flow Cyt
种属反应性	与反应: Human
免疫原	Recombinant full length protein, corresponding to amino acids 1-157 of Human RPS27A

性能

形式	Liquid
存放说明	Shipped at 4°C. Upon delivery aliquot and store at -20°C or -80°C. Avoid repeated freeze / thaw cycles.
存储溶液	Preservative: None PBS, pH 7.2
纯度	Protein G purified
克隆	单克隆
同种型	IgG1
轻链类型	lambda

应用

Our [Abpromise guarantee](#) covers the use of **ab57646** in the following tested applications.

The application notes include recommended starting dilutions; optimal dilutions/concentrations should be determined by the end user.

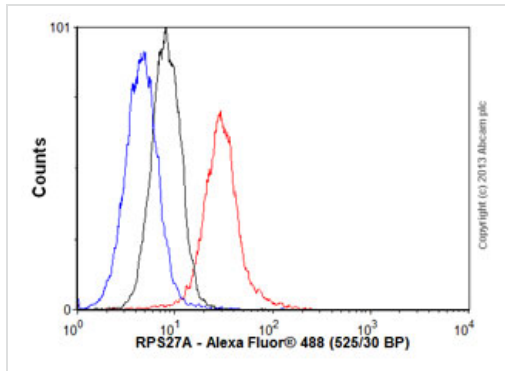
应用	Ab评论	说明
WB		Use a concentration of 1 - 5 µg/ml.
Flow Cyt		Use 0.1µg for 10 ⁶ cells. ab170190 -Mouse monoclonal IgG1, is suitable for use as an isotype control with this antibody.

靶标

相关性

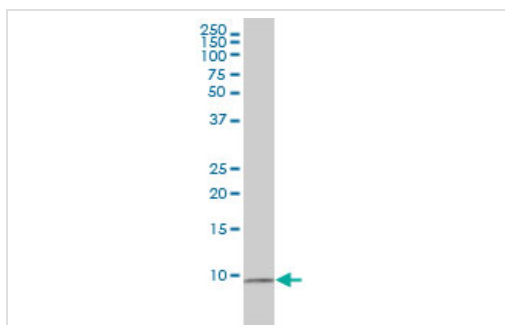
RPS27A (Ribosomal protein S27a) is a component of the 40S subunit of the ribosome. It is synthesized as a C-terminal extension protein (CEP) of ubiquitin. The fusion protein consists of ubiquitin at the N terminus and ribosomal protein S27a at the C terminus. The protein is post-translationally processed, generating free ubiquitin monomer and ribosomal protein S27a.

图片



Flow Cytometry - Anti-RPS27A antibody (ab57646)

Overlay histogram showing HeLa cells stained with ab57646 (red line). The cells were fixed with 80% methanol (5 min) and then permeabilized with 0.1% PBS-Tween for 20 min. The cells were then incubated in 1x PBS / 10% normal goat serum / 0.3M glycine to block non-specific protein-protein interactions followed by the antibody (ab57646, 0.1 μ g/1x10⁶ cells) for 30 min at 22°C. The secondary antibody used was an [anti-mouse Alexa Fluor® 488 \(ab150113\)](#) at 1/2000 dilution for 30 min at 22°C. Isotype control antibody (black line) was mouse IgG1 [ICIGG1] ([ab91353](#), 1 μ g/1x10⁶ cells) used under the same conditions. Unlabelled sample (blue line) was also used as a control. Acquisition of >5,000 events were collected using a 20mW Argon ion laser (488nm) and 525/30 bandpass filter.



Western blot - RPS27A antibody (ab57646)

RPS27A antibody (ab57646) at 1ug/lane + HL-60 cell lysate at 25ug/lane.

Please note: All products are "FOR RESEARCH USE ONLY AND ARE NOT INTENDED FOR DIAGNOSTIC OR THERAPEUTIC USE"

- Replacement or refund for products not performing as stated on the datasheet
- Valid for 12 months from date of delivery
- Response to your inquiry within 24 hours

- We provide support in Chinese, English, French, German, Japanese and Spanish
- Extensive multi-media technical resources to help you
- We investigate all quality concerns to ensure our products perform to the highest standards

If the product does not perform as described on this datasheet, we will offer a refund or replacement. For full details of the Abpromise, please visit <http://www.abcam.cn/abpromise> or contact our technical team.

Terms and conditions

- Guarantee only valid for products bought direct from Abcam or one of our authorized distributors