

Product datasheet

Anti-Testin antibody ab57292

★★★★☆ 1 Abreviews 3 References 4 图像

概述

产品名称	Anti-Testin抗体
描述	小鼠单克隆抗体to Testin
宿主	Mouse
经测试应用	适用于: WB, ICC/IF, IHC-P, Flow Cyt
种属反应性	与反应: Chicken, Human
免疫原	Recombinant full length protein, corresponding to amino acids 1-422 of Human Testin

性能

形式	Liquid
存放说明	Shipped at 4°C. Upon delivery aliquot and store at -20°C or -80°C. Avoid repeated freeze / thaw cycles.
存储溶液	Preservative: None PBS, pH 7.2
纯度	Protein G purified
克隆	单克隆
同种型	IgG1
轻链类型	kappa

应用

Our [Abpromise guarantee](#) covers the use of **ab57292** in the following tested applications.

The application notes include recommended starting dilutions; optimal dilutions/concentrations should be determined by the end user.

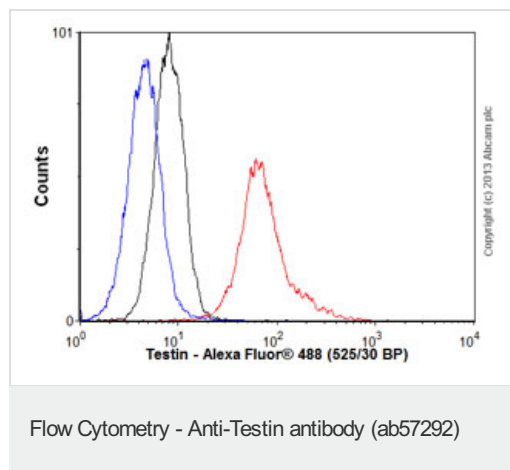
应用	Ab评论	说明
WB		Use a concentration of 1 - 5 µg/ml. Predicted molecular weight: 48 kDa.
ICC/IF		Use a concentration of 10 µg/ml.

应用	Ab评论	说明
IHC-P		Use a concentration of 3 µg/ml.
Flow Cyt		Use 0.1 µg for 10 ⁶ cells. ab170190 -Mouse monoclonal IgG1, is suitable for use as an isotype control with this antibody.

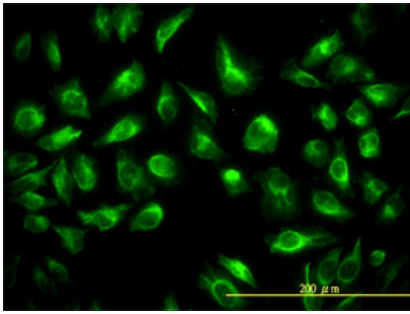
靶标

功能	Scaffold protein that may play a role in cell adhesion, cell spreading and in the reorganization of the actin cytoskeleton. Plays a role in the regulation of cell proliferation. May act as a tumor suppressor. Inhibits tumor cell growth.
组织特异性	Ubiquitous.
序列相似性	Belongs to the prickle / espinas / testin family. Contains 3 LIM zinc-binding domains. Contains 1 PET domain.
结构域	The N-terminal and the C-terminal halves of the protein can associate with each other, thereby hindering interactions with ZYX.
细胞定位	Cytoplasm. Cell junction > focal adhesion. Detected along actin stress fibers.

图片

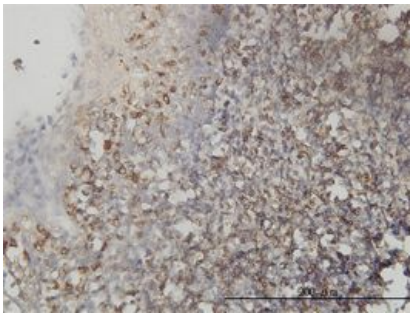


Overlay histogram showing HeLa cells stained with ab57292 (red line). The cells were fixed with 80% methanol (5 min) and then permeabilized with 0.1% PBS-Tween for 20 min. The cells were then incubated in 1x PBS / 10% normal goat serum / 0.3M glycine to block non-specific protein-protein interactions followed by the antibody (ab57292, 0.1 µg/1x10⁶ cells) for 30 min at 22°C. The secondary antibody used was Alexa Fluor® 488 goat anti-mouse IgG (H&L) ([ab150113](#)) at 1/2000 dilution for 30 min at 22°C. Isotype control antibody (black line) was mouse IgG1 [ICIGG1] ([ab91353](#), 1 µg/1x10⁶ cells) used under the same conditions. Unlabelled sample (blue line) was also used as a control. Acquisition of >5,000 events were collected using a 20mW Argon ion laser (488nm) and 525/30 bandpass filter.



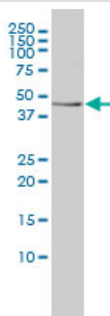
Immunofluorescence - Testin antibody (ab57292)

Testin antibody (ab57292) used in immunofluorescence at 10ug/ml on HeLa cells.



IHC-P - Testin antibody (ab57292)

Testin antibody (ab57292) used in immunohistochemistry at 3ug/ml on formalin fixed and paraffin embedded human tonsil tissue.



Western blot - Testin antibody (ab57292)

Testin antibody (ab57292) at 1ug/lane + K-562 cell lysate at 25ug/lane.

Please note: All products are "FOR RESEARCH USE ONLY AND ARE NOT INTENDED FOR DIAGNOSTIC OR THERAPEUTIC USE"

Our Abpromise to you: Quality guaranteed and expert technical support

- Replacement or refund for products not performing as stated on the datasheet
- Valid for 12 months from date of delivery
- Response to your inquiry within 24 hours
- We provide support in Chinese, English, French, German, Japanese and Spanish
- Extensive multi-media technical resources to help you
- We investigate all quality concerns to ensure our products perform to the highest standards

If the product does not perform as described on this datasheet, we will offer a refund or replacement. For full details of the Abpromise,

please visit <http://www.abcam.cn/abpromise> or contact our technical team.

Terms and conditions

- Guarantee only valid for products bought direct from Abcam or one of our authorized distributors