

Product datasheet

Anti-TIAM2 antibody ab57033

1 图像

概述

产品名称	Anti-TIAM2抗体
描述	小鼠单克隆抗体to TIAM2
经测试应用	适用于: WB
种属反应性	与反应: Human
免疫原	Recombinant fragment: DVHPEAEQQP GPESGEGQKG GEQPKLVRGH FCPIK RKANS TKRDRGTLK AQIRHQSLDS QSENATIDLN SVLEREFVSVQ SLTSVVSEEC FYETESHG, corresponding to amino acids 527-625 of Human TIAM2 Run BLAST with ExPASy Run BLAST with NCBI

性能

形式	Liquid
存放说明	Shipped at 4°C. Upon delivery aliquot and store at -20°C or -80°C. Avoid repeated freeze / thaw cycles.
存储溶液	Preservative: None PBS, pH 7.2
纯度	Protein G purified
克隆	单克隆
同种型	IgG2a
轻链类型	kappa

应用

Our [Abpromise guarantee](#) covers the use of **ab57033** in the following tested applications.

The application notes include recommended starting dilutions; optimal dilutions/concentrations should be determined by the end user.

应用	Ab评论	说明
----	------	----

WB

应用说明 WB: Use at a concentration of 1-5 µg/ml.

This antibody has only been tested in WB against the recombinant fragment used as immunogen. We have no data on the detection of endogenous protein.

Not yet tested in other applications.

Optimal dilutions/concentrations should be determined by the end user.

靶标

功能

Modulates the activity of RHO-like proteins and connects extracellular signals to cytoskeletal activities. Acts as a GDP-dissociation stimulator protein that stimulates the GDP-GTP exchange activity of RHO-like GTPases and activates them. Mediates extracellular laminin signals to activate Rac1, contributing to neurite growth. Involved in lamellipodial formation and advancement of the growth cone of embryonic hippocampal neurons. Promotes migration of neurons in the cerebral cortex. When overexpressed, induces membrane ruffling accompanied by the accumulation of actin filaments along the altered plasma membrane (By similarity). Activates specifically RAC1, but not CDC42 and RHOA.

组织特异性

Expressed in the occipital, frontal and temporal lobes, cerebellum, putamen and testis.

序列相似性

Belongs to the TIAM family.
Contains 1 DH (DBL-homology) domain.
Contains 1 PDZ (DHR) domain.
Contains 2 PH domains.
Contains 1 RBD (Ras-binding) domain.

结构域

The PH 1 domain and amino acids 621-782 (a region called TSS; otherwise known as CC-Ex) are necessary for membrane localization. The PH 1 and TSS domains are necessary for Rac1 activity. The PH 2 domain is engaged in the enhancement of the catalytic activity of the adjacent DH domain. The PH 1, TSS and DH domains are necessary to induce neurite-like structure.

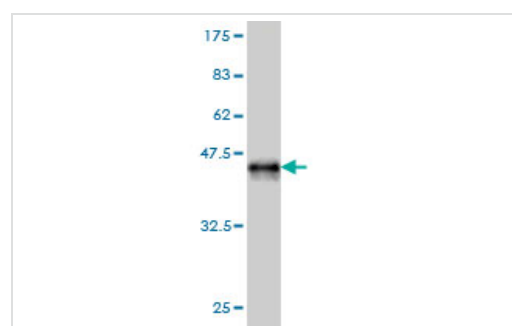
翻译后修饰

Phosphorylated on serine and threonine residues. Phosphorylated on Thr-1648 by Rho-kinase. Its phosphorylation by Rho-kinase inhibits its guanine nucleotide exchange activity, its interaction with MAP1A, MAP1B, PARP1 and YWHAE and reduces its ability to promote neurite growth.

细胞定位

Cytoplasm. Cell projection > lamellipodium. Cell projection > filopodium. Cell projection > growth cone. Localizes to the plasma membrane in neurites.

图片



Western blot - TIAM2 antibody (ab57033)

Western blot against tagged recombinant protein immunogen using ab57033 TIAM2 antibody at 1ug/ml. Predicted band size of immunogen is 37 kDa

Our Abpromise to you: Quality guaranteed and expert technical support

- Replacement or refund for products not performing as stated on the datasheet
- Valid for 12 months from date of delivery
- Response to your inquiry within 24 hours

- We provide support in Chinese, English, French, German, Japanese and Spanish
- Extensive multi-media technical resources to help you
- We investigate all quality concerns to ensure our products perform to the highest standards

If the product does not perform as described on this datasheet, we will offer a refund or replacement. For full details of the Abpromise, please visit <http://www.abcam.cn/abpromise> or contact our technical team.

Terms and conditions

- Guarantee only valid for products bought direct from Abcam or one of our authorized distributors