

Product datasheet

Anti-SAM68 antibody ab56836

★★★★☆ 1 Abreviews 4 图像

概述

产品名称	Anti-SAM68抗体
描述	小鼠单克隆抗体to SAM68
宿主	Mouse
经测试应用	适用于: WB, IHC-P, Flow Cyt, ICC/IF
种属反应性	与反应: Human
免疫原	Recombinant fragment: ILGPQGNTIK RLQEETGAKI SVLGKGSMDR KAKEEELRKG GDPKYAHLNM DLHVFIEVFG PPCEAYALMA HAMEEVKKFL VPDMMDDICQ EQFLELSYLN , corresponding to amino acids 176-275 of Human SAM68 Run BLAST with ExPASy Run BLAST with NCBI
阳性对照	This antibody gave a positive result when used in the following methanol fixed cell lines: Malm-3M

性能

形式	Liquid
存放说明	Shipped at 4°C. Upon delivery aliquot and store at -20°C or -80°C. Avoid repeated freeze / thaw cycles.
存储溶液	Preservative: None PBS, pH 7.2
纯度	Protein G purified
克隆	单克隆
同种型	IgG2a
轻链类型	kappa

应用

Our [Abpromise guarantee](#) covers the use of **ab56836** in the following tested applications.

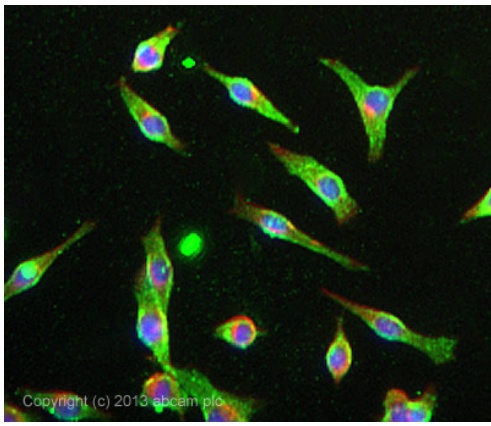
The application notes include recommended starting dilutions; optimal dilutions/concentrations should be determined by the end user.

应用	Ab评论	说明
WB		Use a concentration of 1 - 5 µg/ml. Predicted molecular weight: 48 kDa.
IHC-P		Use a concentration of 3 µg/ml.
Flow Cyt		Use 0.1-1µg for 10 ⁶ cells. ab170191 -Mouse monoclonal IgG2a, is suitable for use as an isotype control with this antibody.
ICC/IF	★★★★☆	Use a concentration of 1 µg/ml.

靶标

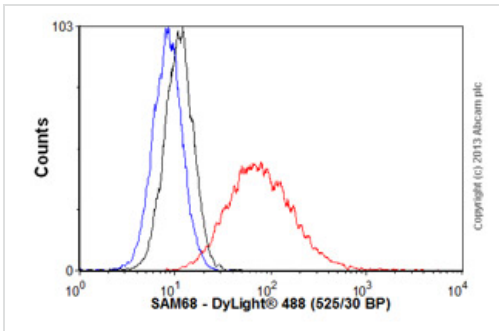
功能	Recruited and tyrosine phosphorylated by several receptor systems, for example the T-cell, leptin and insulin receptors. Once phosphorylated, functions as an adapter protein in signal transduction cascades by binding to SH2 and SH3 domain-containing proteins. Role in G2-M progression in the cell cycle. Represses CBP-dependent transcriptional activation apparently by competing with other nuclear factors for binding to CBP. Also acts as a putative regulator of mRNA stability and/or translation rates and mediates mRNA nuclear export. Isoform 3, which is expressed in growth-arrested cells only, inhibits S phase.
组织特异性	Ubiquitously expressed in all tissue examined. Isoform 1 is expressed at lower levels in brain, skeletal muscle, and liver whereas isoform 3 is intensified in skeletal muscle and in liver.
序列相似性	Belongs to the KHDRBS family. Contains 1 KH domain.
发展阶段	Isoform 3 is only expressed in growth-arrested cells.
结构域	The KH domain is required for binding to RNA. The Pro-rich domains are flanked by Arg/Gly-rich motifs which can be asymmetric dimethylated on arginine residues to give the DMA/Gly-rich regions. Selective methylation on these motifs can modulate protein-protein interactions.
翻译后修饰	Tyrosine phosphorylated by several non-receptor tyrosine kinases, for example LCK, FYN and JAK3. Negatively correlates with ability to bind RNA but required for many interactions with proteins. Acetylated. Positively correlates with ability to bind RNA. Arginine methylation is required for nuclear localization. Also can affect interaction with other proteins. Inhibits interaction with Src-like SH3 domains, but not interaction with WW domains of WBP4/FBP21 AND FNBP4/FBP30. Arg-291, Arg-331 and Arg-346 are found to be also dimethylated, probably to asymmetric dimethylarginine.
细胞定位	Nucleus. Membrane.

图片



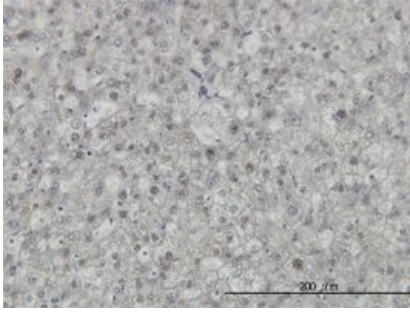
Immunocytochemistry/ Immunofluorescence - Anti-SAM68 antibody (ab56836)

ab56836 stained Malme-3M cells. The cells were 100% methanol fixed (5 min) and then incubated in 1%BSA / 10% normal goat serum / 0.3M glycine in 0.1% PBS-Tween for 1h to permeabilise the cells and block non-specific protein-protein interactions. The cells were then incubated with the antibody ab56836 at 1µg/ml overnight at +4°C. The secondary antibody (green) was DyLight® 488 goat anti- mouse (ab96879) IgG (H+L) used at a 1/250 dilution for 1h. Alexa Fluor® 594 WGA was used to label plasma membranes (red) at a 1/200 dilution for 1h. DAPI was used to stain the cell nuclei (blue) at a concentration of 1.43µM.



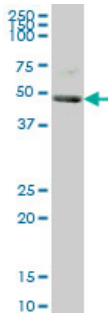
Flow Cytometry - Anti-SAM68 antibody (ab56836)

Overlay histogram showing HeLa cells stained with ab56836 (red line). The cells were fixed with 4% paraformaldehyde (10 min) and then permeabilized with 0.1% PBS-Tween for 20 min. The cells were then incubated in 1x PBS / 10% normal goat serum / 0.3M glycine to block non-specific protein-protein interactions followed by the antibody (ab56836, 0.1µg/1x10⁶ cells) for 30 min at 22°C. The secondary antibody used was DyLight® 488 goat anti-mouse IgG (H+L) (ab96879) at 1/500 dilution for 30 min at 22°C. Isotype control antibody (black line) was mouse IgG2a [ICIGG2A] (ab91361, 1µg/1x10⁶ cells) used under the same conditions. Unlabelled sample (blue line) was also used as a control. Acquisition of >5,000 events were collected using a 20mW Argon ion laser (488nm) and 525/30 bandpass filter. This antibody gave a positive signal in HeLa cells fixed with 80% methanol (5 min)/permeabilized with 0.1% PBS-Tween for 20 min used under the same conditions.



IHC-P - SAM68 antibody (ab56836)

SAM68 antibody (ab56836) used in immunohistochemistry at 3ug/ml on formalin fixed and paraffin embedded human liver.



Western blot - SAM68 antibody (ab56836)

SAM68 antibody (ab56836) at 1ug/lane + A-431 cell lysate at 25ug/lane.

Please note: All products are "FOR RESEARCH USE ONLY AND ARE NOT INTENDED FOR DIAGNOSTIC OR THERAPEUTIC USE"

Our Abpromise to you: Quality guaranteed and expert technical support

- Replacement or refund for products not performing as stated on the datasheet
- Valid for 12 months from date of delivery
- Response to your inquiry within 24 hours
- We provide support in Chinese, English, French, German, Japanese and Spanish
- Extensive multi-media technical resources to help you
- We investigate all quality concerns to ensure our products perform to the highest standards

If the product does not perform as described on this datasheet, we will offer a refund or replacement. For full details of the Abpromise, please visit <http://www.abcam.cn/abpromise> or contact our technical team.

Terms and conditions

- Guarantee only valid for products bought direct from Abcam or one of our authorized distributors