

Product datasheet

Anti-BVES antibody ab56814

1 图像

概述

产品名称	Anti-BVES抗体
描述	小鼠单克隆抗体to BVES
宿主	Mouse
经测试应用	适用于: WB
种属反应性	与反应: Human
免疫原	Recombinant fragment: YSLNDPTLND KKAKKLEHQL SLCTQISMLE MRNSIASSSD SDDGLHQFLR GTSSMSSLHV SSPHQRASAK MKPIEEGAED DDDVFEPASP NTLKVHQLP, corresponding to amino acids 262-361 of Human BVES Run BLAST with ExPASy Run BLAST with NCBI

性能

形式	Liquid
存放说明	Shipped at 4°C. Upon delivery aliquot and store at -20°C or -80°C. Avoid repeated freeze / thaw cycles.
存储溶液	Preservative: None PBS, pH 7.2
纯度	Protein G purified
克隆	单克隆
同种型	IgG2a
轻链类型	kappa

应用

Our [Abpromise guarantee](#) covers the use of **ab56814** in the following tested applications.

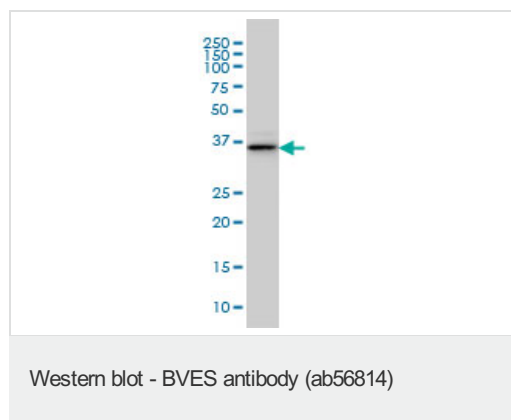
The application notes include recommended starting dilutions; optimal dilutions/concentrations should be determined by the end user.

应用	Ab评论	说明
WB		Use a concentration of 1 - 5 µg/ml. Predicted molecular weight: 41 kDa.

靶标

功能	Cell adhesion molecule involved in the establishment and/or maintenance of cell integrity. Involved in the formation and regulation of the tight junction (TJ) paracellular permeability barrier in epithelial cells. Plays a role in VAMP3-mediated vesicular transport and recycling of different receptor molecules through its interaction with VAMP3. Plays a role in the regulation of cell shape and movement by modulating the Rho-family GTPase activity through its interaction with ARHGEF25/GEFT. Induces primordial adhesive contact and aggregation of epithelial cells in a Ca(2+)-independent manner. Also involved in striated muscle regeneration and repair and in the regulation of cell spreading.
组织特异性	Expressed in epithelial cells (at protein level). Expressed in fetal and adult heart and skeletal muscle.
序列相似性	Belongs to the popeye family.
细胞定位	Lateral cell membrane. Cell junction > tight junction. Membrane. Colocalizes with VAMP3 at the cell-cell contact in cardiac and skeletal muscle (By similarity). Its movement from the cytoplasm to membrane is an early event occurring concurrently with cell-cell contact. Colocalizes in epithelial cells with OCLN and TJP1 in an apical-lateral position within the z axis. Detected at cell-cell contact but never observed at the free surface of epithelial cells.

图片



BVES antibody (ab56814) at 1 ug/lane + IMR-32 cell lysate at 25ug/lane.

Please note: All products are "FOR RESEARCH USE ONLY AND ARE NOT INTENDED FOR DIAGNOSTIC OR THERAPEUTIC USE"

Our Abpromise to you: Quality guaranteed and expert technical support

- Replacement or refund for products not performing as stated on the datasheet
- Valid for 12 months from date of delivery
- Response to your inquiry within 24 hours
- We provide support in Chinese, English, French, German, Japanese and Spanish
- Extensive multi-media technical resources to help you
- We investigate all quality concerns to ensure our products perform to the highest standards

If the product does not perform as described on this datasheet, we will offer a refund or replacement. For full details of the Abpromise, please visit <http://www.abcam.cn/abpromise> or contact our technical team.

Terms and conditions

- Guarantee only valid for products bought direct from Abcam or one of our authorized distributors