

Product datasheet

Anti-Cip4 antibody ab56545

1 图像

概述

产品名称	Anti-Cip4抗体
描述	小鼠单克隆抗体to Cip4
经测试应用	适用于: WB
种属反应性	与反应: Human
免疫原	Recombinant fragment: YGLLSEAELE VVPIIAKCLE GMKVAANA VD PKNDSHV LIE LHKSGFARPG DVEFEDFSQP MNRAPSDSSL GTPSDGRPEL RGPGRSRTKR WPF GKKNKT, corresponding to amino acids 231-330 of Human Cip4 Run BLAST with ExPASy Run BLAST with NCBI

性能

形式	Liquid
存放说明	Shipped at 4°C. Upon delivery aliquot and store at -20°C or -80°C. Avoid repeated freeze / thaw cycles.
存储溶液	Preservative: None PBS, pH 7.2
纯度	Protein G purified
克隆	单克隆
同种型	IgG2b
轻链类型	kappa

应用

Our [Abpromise guarantee](#) covers the use of **ab56545** in the following tested applications.

The application notes include recommended starting dilutions; optimal dilutions/concentrations should be determined by the end user.

应用	Ab评论	说明
----	------	----

WB

应用说明 WB: Use at a concentration of 1-5 µg/ml.

This antibody has only been tested in WB against the recombinant fragment used as immunogen. We have no data on the detection of endogenous protein.

Not yet tested in other applications.

Optimal dilutions/concentrations should be determined by the end user.

靶标

功能

Required for translocation of GLUT4 to the plasma membrane in response to insulin signaling (By similarity). Required to coordinate membrane tubulation with reorganization of the actin cytoskeleton during endocytosis. Binds to lipids such as phosphatidylinositol 4,5-bisphosphate and phosphatidylserine and promotes membrane invagination and the formation of tubules. Also promotes CDC42-induced actin polymerization by recruiting WASL/N-WASP which in turn activates the Arp2/3 complex. Actin polymerization may promote the fission of membrane tubules to form endocytic vesicles. Required for the formation of podosomes, actin-rich adhesion structures specific to monocyte-derived cells. May be required for the lysosomal retention of FASLG/FASL.

组织特异性

Expressed in brain, colon, heart, kidney, liver, lung, megakaryocyte, ovary, pancreas, peripheral blood lymphocytes, placenta, prostate, skeletal muscle, small intestine, spleen, testis, thymus and trachea.

序列相似性

Belongs to the FNBP1 family.
Contains 1 FCH domain.
Contains 1 REM (Hr1) repeat.
Contains 1 SH3 domain.

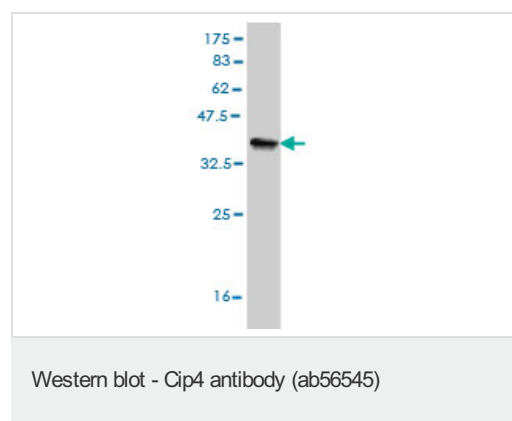
翻译后修饰

Tyrosine phosphorylated. Also phosphorylated by PKA.

细胞定位

Cytoplasm > perinuclear region and Cytoplasm > cytoskeleton. Cytoplasm > cell cortex. Lysosome. Golgi apparatus. Cell membrane. Cell projection > phagocytic cup. Translocates to the plasma membrane in response to insulin stimulation, and this may require active RHOQ (By similarity). Localizes to cortical regions coincident with F-actin, to lysosomes and to sites of phagocytosis in macrophages. Also localizes to the Golgi, and this requires AKAP9.

图片



Western blot against tagged recombinant protein immunogen using ab56545 Cip4 antibody at 1ug/ml. Predicted band size of immunogen is 37 kDa

Please note: All products are "FOR RESEARCH USE ONLY AND ARE NOT INTENDED FOR DIAGNOSTIC OR THERAPEUTIC USE"

Our Abpromise to you: Quality guaranteed and expert technical support

- Replacement or refund for products not performing as stated on the datasheet
- Valid for 12 months from date of delivery
- Response to your inquiry within 24 hours

- We provide support in Chinese, English, French, German, Japanese and Spanish
- Extensive multi-media technical resources to help you
- We investigate all quality concerns to ensure our products perform to the highest standards

If the product does not perform as described on this datasheet, we will offer a refund or replacement. For full details of the Abpromise, please visit <http://www.abcam.cn/abpromise> or contact our technical team.

Terms and conditions

- Guarantee only valid for products bought direct from Abcam or one of our authorized distributors