

Product datasheet

Anti-KAT3A / CBP antibody ab55419

1 图像

概述

产品名称	Anti-KAT3A / CBP抗体
描述	兔多克隆抗体to KAT3A / CBP
宿主	Rabbit
特异性	ab55419 detects endogenous levels of total CBP protein.
经测试应用	适用于: WB, ELISA
种属反应性	与反应: Human 预测可用于: Mouse, Rat
免疫原	Synthetic peptide derived from human CBP.
阳性对照	COLO205 cell extract.

性能

形式	Liquid
存放说明	Shipped at 4°C. Store at -20°C. Stable for 12 months at -20°C.
存储溶液	Preservative: 0.02% Sodium Azide Constituents: 50% Glycerol, PBS (without Mg ²⁺ and Ca ²⁺), 150mM Sodium chloride, pH 7.4
纯度	Immunogen affinity purified
克隆	多克隆
同种型	IgG

应用

Our [Abpromise guarantee](#) covers the use of **ab55419** in the following tested applications.

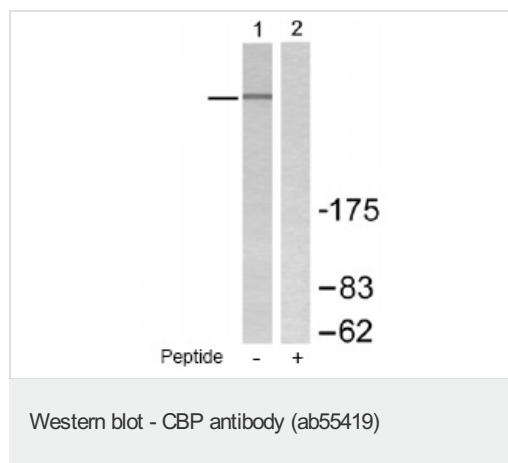
The application notes include recommended starting dilutions; optimal dilutions/concentrations should be determined by the end user.

应用	Ab评论	说明
WB		1/500 - 1/1000. Detects a band of approximately 265 kDa (predicted molecular weight: 265 kDa).
ELISA		1/1000.

靶标

功能	Acetylates histones, giving a specific tag for transcriptional activation. Also acetylates non-histone proteins, like NCOA3 coactivator. Binds specifically to phosphorylated CREB and enhances its transcriptional activity toward cAMP-responsive genes. Acts as a coactivator of ALX1 in the presence of EP300.
疾病相关	Note=Chromosomal aberrations involving CREBBP may be a cause of acute myeloid leukemias. Translocation t(8;16)(p11;p13) with MYST3/MOZ; translocation t(11;16)(q23;p13.3) with MLL/HRX; translocation t(10;16)(q22;p13) with MYST4/MORF. MYST3-CREBBP may induce leukemia by inhibiting RUNX1-mediated transcription. Defects in CREBBP are a cause of Rubinstein-Taybi syndrome type 1 (RSTS1) [MIM:180849]. RSTS1 is an autosomal dominant disorder characterized by craniofacial abnormalities, broad thumbs, broad big toes, mental retardation and a propensity for development of malignancies.
序列相似性	Contains 1 bromo domain. Contains 1 KIX domain. Contains 2 TAZ-type zinc fingers. Contains 1 ZZ-type zinc finger.
结构域	The KIX domain mediates binding to HIV-1 Tat.
翻译后修饰	Methylation of the KIX domain by CARM1 blocks association with CREB. This results in the blockade of CREB signaling, and in activation of apoptotic response. Phosphorylated upon DNA damage, probably by ATM or ATR. Sumoylation negatively regulates transcriptional activity via the recruitment of DAAX.
细胞定位	Cytoplasm. Nucleus. Recruited to nuclear bodies by SS18L1/CREST. In the presence of ALX1 relocalizes from the cytoplasm to the nucleus.

图片



All lanes : Anti-KAT3A / CBP antibody (ab55419) at 1/500 dilution

Lane 1 : COLO205 cell extract, without immunizing peptide

Lane 2 : COLO205 cell extract, with immunizing peptide

Predicted band size: 265 kDa

Observed band size: 265 kDa

Please note: All products are "FOR RESEARCH USE ONLY AND ARE NOT INTENDED FOR DIAGNOSTIC OR THERAPEUTIC USE"

Our Promise to you: Quality guaranteed and expert technical support

- Replacement or refund for products not performing as stated on the datasheet

- Valid for 12 months from date of delivery
- Response to your inquiry within 24 hours

- We provide support in Chinese, English, French, German, Japanese and Spanish
- Extensive multi-media technical resources to help you
- We investigate all quality concerns to ensure our products perform to the highest standards

If the product does not perform as described on this datasheet, we will offer a refund or replacement. For full details of the Abpromise, please visit <http://www.abcam.cn/abpromise> or contact our technical team.

Terms and conditions

- Guarantee only valid for products bought direct from Abcam or one of our authorized distributors