

Product datasheet

Anti-PACAP receptor antibody ab54980

★★★★★ 1 Abreviews 2 References 2 图像

概述

产品名称	Anti-PACAP receptor抗体
描述	小鼠单克隆抗体to PACAP receptor
宿主	Mouse
经测试应用	适用于: WB, ICC/IF
种属反应性	与反应: Rat, Human
免疫原	Recombinant fragment: MHSDCIFKKE QAMCLEKIQR ANELMGFNDS SPGCPGMWDN ITCWKPAHVG EMVLVSCPEL FRIFNPDQVW ETETIGESDF GDSNSLDLSD MGVVS RNCTE , corresponding to amino acids 21-121 of Human PACAP receptor Run BLAST with ExPASy Run BLAST with NCBI

常规说明

Abcam is committed to meeting high standards of ethical manufacturing and has decided to discontinue this product by July 2018 as it has been generated by the ascites method. We are sorry for any inconvenience this may cause.

性能

形式	Liquid
存放说明	Shipped at 4°C. Upon delivery aliquot and store at -20°C or -80°C. Avoid repeated freeze / thaw cycles.
存储溶液	Preservative: None PBS, pH 7.2
纯度	Protein G purified
克隆	单克隆
同种型	IgG1
轻链类型	kappa

应用

Our [Abpromise guarantee](#) covers the use of **ab54980** in the following tested applications.

The application notes include recommended starting dilutions; optimal dilutions/concentrations should be determined by the end user.

应用	Ab评论	说明
WB	★★★★★	Use a concentration of 1 - 5 µg/ml. Predicted molecular weight: 53 kDa.
ICC/IF		Use a concentration of 5 µg/ml.

靶标

功能

This is a receptor for PACAP-27 and PACAP-38. The activity of this receptor is mediated by G proteins which activate adenylyl cyclase. May regulate the release of adrenocorticotropin, luteinizing hormone, growth hormone, prolactin, epinephrine, and catecholamine. May play a role in spermatogenesis and sperm motility. Causes smooth muscle relaxation and secretion in the gastrointestinal tract.

组织特异性

Most abundant in the brain, low expression in the lung, liver, thymus, spleen, pancreas and placenta.

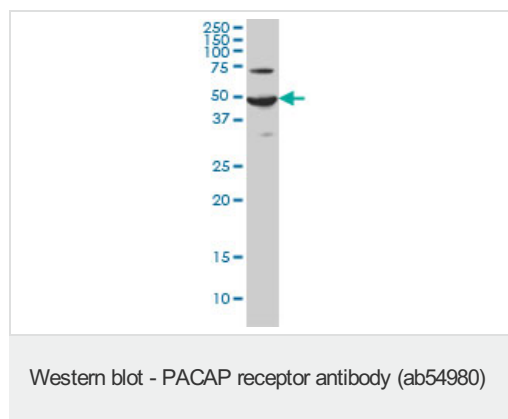
序列相似性

Belongs to the G-protein coupled receptor 2 family.

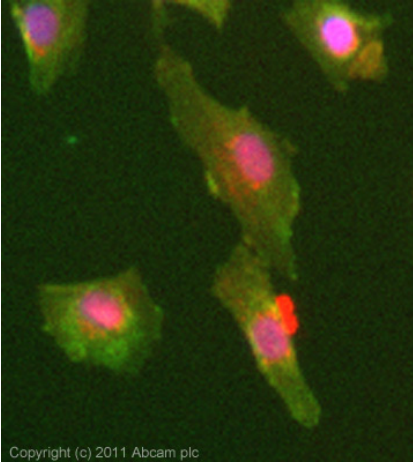
细胞定位

Cell membrane.

图片



PACAP receptor antibody (ab54980) at 1ug/lane + HeLa cell lysate at 25ug/lane.



Immunocytochemistry/ Immunofluorescence -
PACAP receptor antibody (ab54980)

ICC/IF image of ab54980 stained SKNSH cells. The cells were 4% PFA fixed (10 min) and then incubated in 1%BSA / 10% normal goat serum / 0.3M glycine in 0.1% PBS-Tween for 1h to permeabilise the cells and block non-specific protein-protein interactions. The cells were then incubated with the antibody (ab54890, 5µg/ml) overnight at +4°C. The secondary antibody (green) was ab96879, DyLight® 488 goat anti-mouse IgG (H+L) used at a 1/250 dilution for 1h. Alexa Fluor® 594 WGA was used to label plasma membranes (red) at a 1/200 dilution for 1h. DAPI was used to stain the cell nuclei (blue) at a concentration of 1.43µM.

Please note: All products are "FOR RESEARCH USE ONLY AND ARE NOT INTENDED FOR DIAGNOSTIC OR THERAPEUTIC USE"

Our Abpromise to you: Quality guaranteed and expert technical support

- Replacement or refund for products not performing as stated on the datasheet
- Valid for 12 months from date of delivery
- Response to your inquiry within 24 hours
- We provide support in Chinese, English, French, German, Japanese and Spanish
- Extensive multi-media technical resources to help you
- We investigate all quality concerns to ensure our products perform to the highest standards

If the product does not perform as described on this datasheet, we will offer a refund or replacement. For full details of the Abpromise, please visit <http://www.abcam.cn/abpromise> or contact our technical team.

Terms and conditions

- Guarantee only valid for products bought direct from Abcam or one of our authorized distributors