

Product datasheet

Anti-Mesothelin antibody ab53285

1 图像

概述

产品名称	Anti-Mesothelin抗体
描述	鸡多克隆抗体to Mesothelin
宿主	Chicken
经测试应用	适用于: WB
种属反应性	与反应: Human
免疫原	Synthetic peptide, corresponding to amino acids 361-580 of Human Mesothelin

性能

形式	Liquid
存放说明	Shipped at 4°C. Store at +4°C short term (1-2 weeks). Upon delivery aliquot. Store at -20°C long term.
存储溶液	Preservative: 0.01% Sodium Azide Constituents: PBS
纯度	Immunogen affinity purified
克隆	多克隆
同种型	IgY

应用

Our [Abpromise guarantee](#) covers the use of **ab53285** in the following tested applications. The application notes include recommended starting dilutions; optimal dilutions/concentrations should be determined by the end user.

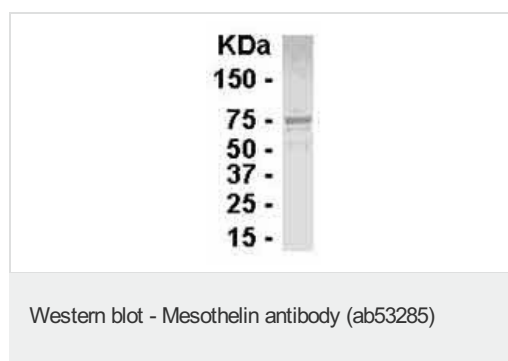
应用	Ab评论	说明
WB		1/2000. Detects a band of approximately 75 kDa (predicted molecular weight: 69 kDa).

靶标

功能 Membrane-anchored forms may play a role in cellular adhesion.

组织特异性	Megakaryocyte-potentiating factor (MPF) potentiates megakaryocyte colony formation in vitro. Expressed in lung. Expressed at low levels in heart, placenta and kidney. Expressed in mesothelial cells. Highly expressed in mesotheliomas, ovarian cancers, and some squamous cell carcinomas (at protein level).
疾病相关	Note=Antibodies against MSLN are detected in patients with mesothelioma and ovarian cancer.
序列相似性	Belongs to the mesothelin family.
翻译后修饰	Both MPF and the cleaved form of mesothelin are N-glycosylated. Proteolytically cleaved by a furin-like convertase to generate megakaryocyte-potentiating factor (MPF), and the cleaved form of mesothelin.
细胞定位	Secreted and Cell membrane. Golgi apparatus.

图片



Anti-Mesothelin antibody (ab53285) at 1/2000 dilution + E coli-derived fusion protein

Secondary

Goat anti-IgY-HRP at 1/1000 dilution

Predicted band size: 69 kDa

Observed band size: 75 kDa

Colorimetric method for signal development

Please note: All products are "FOR RESEARCH USE ONLY AND ARE NOT INTENDED FOR DIAGNOSTIC OR THERAPEUTIC USE"

Our Abpromise to you: Quality guaranteed and expert technical support

- Replacement or refund for products not performing as stated on the datasheet
- Valid for 12 months from date of delivery
- Response to your inquiry within 24 hours
- We provide support in Chinese, English, French, German, Japanese and Spanish
- Extensive multi-media technical resources to help you
- We investigate all quality concerns to ensure our products perform to the highest standards

If the product does not perform as described on this datasheet, we will offer a refund or replacement. For full details of the Abpromise, please visit <http://www.abcam.cn/abpromise> or contact our technical team.

Terms and conditions

- Guarantee only valid for products bought direct from Abcam or one of our authorized distributors