

Product datasheet

Anti-MelanA antibody ab53135

2 图像

概述

产品名称	Anti-MelanA抗体
描述	兔多克隆抗体to MelanA
宿主	Rabbit
特异性	ab53135 detects endogenous levels of total MART-1 protein.
经测试应用	适用于: WB, IHC-P
种属反应性	与反应: Human
免疫原	Synthetic peptide derived from an internal region within Human MelanA

性能

形式	Liquid
存放说明	Shipped at 4°C. Upon delivery aliquot and store at -20°C. Avoid freeze / thaw cycles.
存储溶液	Preservative: 0.02% Sodium azide Constituents: PBS, 0.87% Sodium chloride, 50% Glycerol
纯度	Immunogen affinity purified
纯化说明	The antibody was affinity-purified from rabbit antiserum by affinity-chromatography using epitope-specific immunogen
克隆	多克隆
同种型	IgG

应用

Our [Abpromise guarantee](#) covers the use of **ab53135** in the following tested applications.

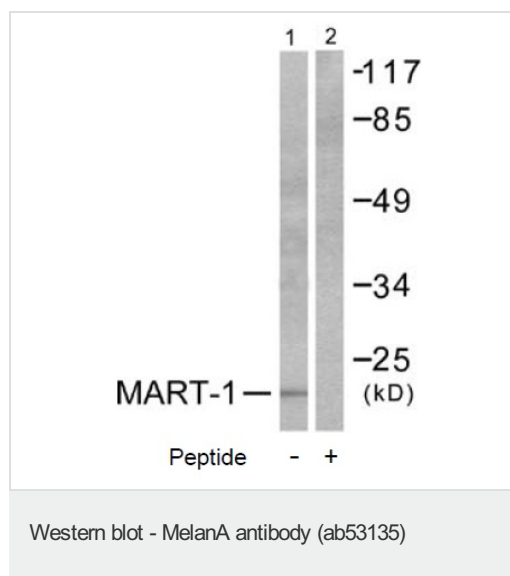
The application notes include recommended starting dilutions; optimal dilutions/concentrations should be determined by the end user.

应用	Ab评论	说明
WB		1/500 - 1/1000. Predicted molecular weight: 13 kDa.
IHC-P		1/50 - 1/100.

## 靶标

<b>功能</b>	Involved in melanosome biogenesis by ensuring the stability of GPR143. Plays a vital role in the expression, stability, trafficking, and processing of melanocyte protein PMEL, which is critical to the formation of stage II melanosomes.
<b>组织特异性</b>	Expression is restricted to melanoma and melanocyte cell lines and retina.
<b>翻译后修饰</b>	Acylated.
<b>细胞定位</b>	Endoplasmic reticulum membrane. Golgi apparatus. Golgi apparatus > trans-Golgi network membrane. Melanosome. Also found in small vesicles and tubules dispersed over the entire cytoplasm. A small fraction of the protein is inserted into the membrane in an inverted orientation. Inversion of membrane topology results in the relocalization of the protein from a predominant Golgi/post-Golgi area to the endoplasmic reticulum. Melanoma cells expressing the protein with an inverted membrane topology are more effectively recognized by specific cytolytic T-lymphocytes than those expressing the protein in its native membrane orientation.

## 图片



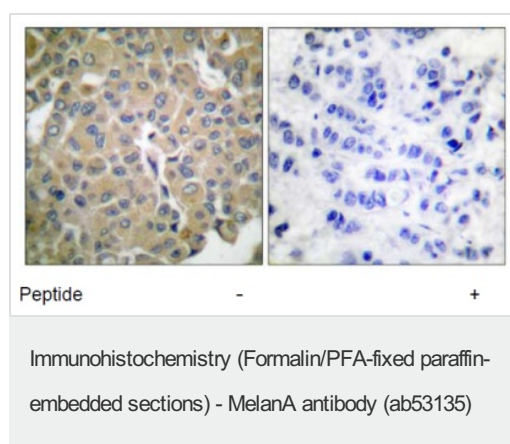
**All lanes :** Anti-MelanA antibody (ab53135)

**Lane 1 :** NIH/3T3 cells

**Lane 2 :** NIH/3T3 cells with blocking peptide

**Predicted band size:** 13 kDa

**Observed band size:** 13 kDa



ab53135 staining MelanA in human breast carcinoma tissue by Immunohistochemistry (Formalin/PFA-Fixed paraffin-embedded sections). Picture shows staining with and without the blocking peptide.

**Please note:** All products are "FOR RESEARCH USE ONLY AND ARE NOT INTENDED FOR DIAGNOSTIC OR THERAPEUTIC USE"

## **Our Abpromise to you: Quality guaranteed and expert technical support**

---

- Replacement or refund for products not performing as stated on the datasheet
- Valid for 12 months from date of delivery
- Response to your inquiry within 24 hours
  
- We provide support in Chinese, English, French, German, Japanese and Spanish
- Extensive multi-media technical resources to help you
- We investigate all quality concerns to ensure our products perform to the highest standards

If the product does not perform as described on this datasheet, we will offer a refund or replacement. For full details of the Abpromise, please visit <http://www.abcam.cn/abpromise> or contact our technical team.

## **Terms and conditions**

---

- Guarantee only valid for products bought direct from Abcam or one of our authorized distributors