

Product datasheet

Anti-MMP9 antibody ab53018

2 图像

概述

产品名称	Anti-MMP9抗体
描述	兔多克隆抗体to MMP9
宿主	Rabbit
特异性	MMP9 antibody detects endogenous levels of total MMP9 protein.
经测试应用	适用于: WB, ELISA, IHC-P
种属反应性	与反应: Human
免疫原	Synthetic peptide derived from human MMP9
阳性对照	Human breast carcinoma tissue; extracts from HepG2 cells

性能

形式	Liquid
存放说明	Shipped at 4°C. Upon delivery aliquot and store at -20°C. Avoid freeze / thaw cycles.
存储溶液	pH: 7.40 Preservative: 0.02% Sodium azide Constituents: 50% Glycerol, PBS, 0.87% Sodium chloride
纯度	Immunogen affinity purified
克隆	多克隆
同种型	IgG

应用

Our [Abpromise guarantee](#) covers the use of **ab53018** in the following tested applications.

The application notes include recommended starting dilutions; optimal dilutions/concentrations should be determined by the end user.

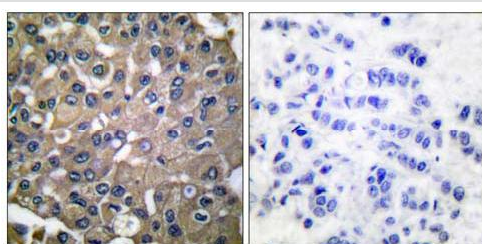
应用	Ab评论	说明
WB		1/500 - 1/1000. Detects a band of approximately 78 kDa (predicted molecular weight: 78 kDa).
ELISA		1/5000.

应用	Ab评论	说明
IHC-P		1/50 - 1/100.

靶标

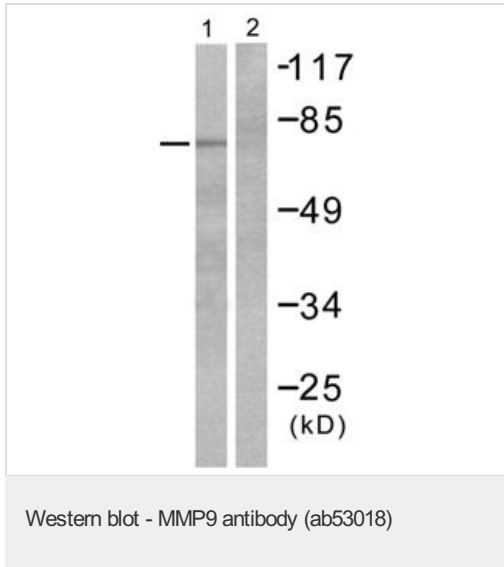
功能	May play an essential role in local proteolysis of the extracellular matrix and in leukocyte migration. Could play a role in bone osteoclastic resorption. Cleaves KiSS1 at a Gly-Leu bond. Cleaves type IV and type V collagen into large C-terminal three quarter fragments and shorter N-terminal one quarter fragments. Degrades fibronectin but not laminin or Pz-peptide.
组织特异性	Produced by normal alveolar macrophages and granulocytes.
疾病相关	Intervertebral disc disease Metaphyseal anadysplasia 2
序列相似性	Belongs to the peptidase M10A family. Contains 3 fibronectin type-II domains. Contains 4 hemopexin repeats.
结构域	The conserved cysteine present in the cysteine-switch motif binds the catalytic zinc ion, thus inhibiting the enzyme. The dissociation of the cysteine from the zinc ion upon the activation-peptide release activates the enzyme.
翻译后修饰	Processing of the precursor yields different active forms of 64, 67 and 82 kDa. Sequentially processing by MMP3 yields the 82 kDa matrix metalloproteinase-9. N- and O-glycosylated.
细胞定位	Secreted, extracellular space, extracellular matrix.

图片



Immunohistochemical analysis of paraffin-embedded human breast carcinoma tissue using MMP9 antibody ab53018 1/50. The left hand image shows untreated tissue; right hand image shows tissue treated with the immunising peptide.

Immunohistochemistry (Paraffin-embedded sections)
- MMP9 antibody (ab53018)



All lanes : Anti-MMP9 antibody (ab53018) at 1/500 dilution

Lane 1 : Extracts from HepG2 cells with no immunizing peptide

Lane 2 : Extracts from HepG2 cells with immunizing peptide

Predicted band size: 78 kDa

Observed band size: 78 kDa

Please note: All products are "FOR RESEARCH USE ONLY AND ARE NOT INTENDED FOR DIAGNOSTIC OR THERAPEUTIC USE"

Our Abpromise to you: Quality guaranteed and expert technical support

- Replacement or refund for products not performing as stated on the datasheet
- Valid for 12 months from date of delivery
- Response to your inquiry within 24 hours
- We provide support in Chinese, English, French, German, Japanese and Spanish
- Extensive multi-media technical resources to help you
- We investigate all quality concerns to ensure our products perform to the highest standards

If the product does not perform as described on this datasheet, we will offer a refund or replacement. For full details of the Abpromise, please visit <http://www.abcam.cn/abpromise> or contact our technical team.

Terms and conditions

- Guarantee only valid for products bought direct from Abcam or one of our authorized distributors