


## Product datasheet

# Anti-Caspase-7 antibody ab52297

★★★★☆ 1 Abreviews 1 References 1 图像

### 概述

产品名称	Anti-Caspase-7抗体
描述	兔多克隆抗体to Caspase-7
宿主	Rabbit
特异性	ab52297 detects endogenous levels of fragment of activated Caspase-7 resulting from cleavage adjacent to Asp198.
经测试应用	适用于: IHC-P, ELISA
种属反应性	与反应: Human 预测可用于: Mouse, Rat 
免疫原	Synthetic peptide corresponding to Human Caspase-7. Database link: <a href="#">P55210</a>
阳性对照	Human lung carcinoma tissue.
常规说明	ab52297 is Cleaved at Asp198

### 性能

形式	Liquid
存放说明	Shipped at 4°C. Store at +4°C short term (1-2 weeks). Upon delivery aliquot. Store at -20°C. Avoid freeze / thaw cycle.
存储溶液	Preservative: 0.02% Sodium Azide Constituents: 50% Glycerol, PBS (without Mg <sup>2+</sup> and Ca <sup>2+</sup> ), 150mM Sodium chloride, pH 7.4
纯度	Protein A purified
纯化说明	ab52297 was affinity-purified from rabbit antiserum by affinity-chromatography using epitope-specific immunogen.
克隆	多克隆
同种型	IgG

### 应用

Our [Abpromise guarantee](#) covers the use of **ab52297** in the following tested applications.

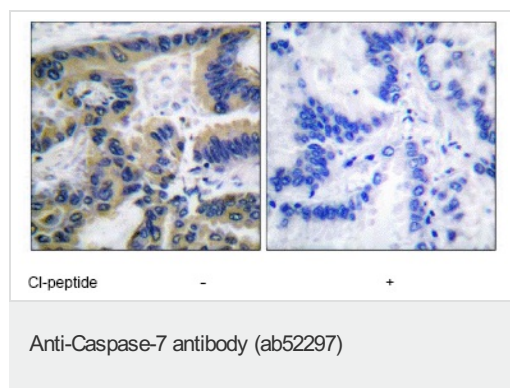
The application notes include recommended starting dilutions; optimal dilutions/concentrations should be determined by the end user.

应用	Ab评论	说明
IHC-P	★★★★☆	Use at an assay dependent concentration.
ELISA		1/40000.

## 靶标

<b>功能</b>	Involved in the activation cascade of caspases responsible for apoptosis execution. Cleaves and activates sterol regulatory element binding proteins (SREBPs). Proteolytically cleaves poly(ADP-ribose) polymerase (PARP) at a '216-Asp-Gly-217' bond. Overexpression promotes programmed cell death.
<b>组织特异性</b>	Highly expressed in lung, skeletal muscle, liver, kidney, spleen and heart, and moderately in testis. No expression in the brain.
<b>序列相似性</b>	Belongs to the peptidase C14A family.
<b>翻译后修饰</b>	Cleavages by granzyme B or caspase-10 generate the two active subunits. Propeptide domains can also be cleaved efficiently by caspase-3. Active heterodimers between the small subunit of caspase-7 and the large subunit of caspase-3, and vice versa, also occur.
<b>细胞定位</b>	Cytoplasm.

## 图片



ab52297 at 1:50 dilution staining Caspase-7 in human lung carcinoma by Immunohistochemistry, Paraffin embedded tissue, in the absence or presence of the immunising peptide.

ab52297 at 1/50 dilution staining Caspase 7 in human lung carcinoma by Immunohistochemistry, Paraffin embedded tissue, in the absence or presence of the immunising peptide.

**Please note:** All products are "FOR RESEARCH USE ONLY AND ARE NOT INTENDED FOR DIAGNOSTIC OR THERAPEUTIC USE"

## Our Abpromise to you: Quality guaranteed and expert technical support

- Replacement or refund for products not performing as stated on the datasheet
- Valid for 12 months from date of delivery
- Response to your inquiry within 24 hours

- We provide support in Chinese, English, French, German, Japanese and Spanish
- Extensive multi-media technical resources to help you
- We investigate all quality concerns to ensure our products perform to the highest standards

If the product does not perform as described on this datasheet, we will offer a refund or replacement. For full details of the Abpromise, please visit <http://www.abcam.cn/abpromise> or contact our technical team.

### **Terms and conditions**

---

- Guarantee only valid for products bought direct from Abcam or one of our authorized distributors