

Product datasheet

Anti-AKAP8L antibody ab51342

1 References 3 图像

概述

产品名称	Anti-AKAP8L 抗体
描述	兔多克隆抗体 to AKAP8L
宿主	Rabbit
经测试应用	适用于: ELISA, WB, IHC-P
种属反应性	与反应: Human 预测可用于: Mouse, Rat, Rabbit, Horse, Cow, Dog, Pig
免疫原	A region within synthetic peptide: GAVSPPPPPP PEEEEEGAVP LLGGALQRQI RGIPGLDVED DEEGGGGAP, corresponding to C terminal amino acids 598-646 of Human AKAP8L Run BLAST with ExPASy Run BLAST with NCBI
阳性对照	Jurkat cell lysate, human lung and human kidney tissue.

性能

形式	Liquid
存放说明	Shipped at 4°C. Upon delivery aliquot and store at -20°C or -80°C. Avoid repeated freeze / thaw cycles.
存储溶液	Preservative: None Constituents: 2% Sucrose, PBS
纯度	Protein A purified
克隆	多克隆
同种型	IgG

应用

Our [Abpromise guarantee](#) covers the use of **ab51342** in the following tested applications.

The application notes include recommended starting dilutions; optimal dilutions/concentrations should be determined by the end user.

应用	Ab 评论	说明
ELISA		Use at an assay dependent concentration. Peptide ELISA: 1/312500.
WB		Use a concentration of 1.25 µg/ml. Detects a band of approximately 72 kDa (predicted molecular weight: 72 kDa). Good results were obtained when blocked with 5% non-fat dry milk in 0.05% PBS-T.
IHC-P		Use a concentration of 4 - 8 µg/ml.

靶标

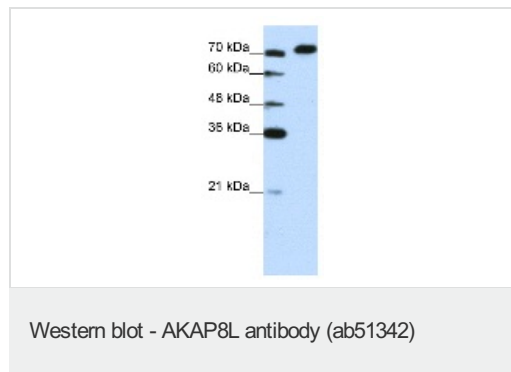
相关性

AKAP8L could play a role in constitutive transport element (CTE)-mediated gene expression. It does not seem to be implicated in the binding of regulatory subunit II of PKA. It may be involved in nuclear envelope breakdown and chromatin condensation. It may regulate the initiation phase of DNA replication when associated with TMPO-beta.

细胞定位

Nuclear matrix. Cytoplasm. Note=Nuclear at steady state but shuttles between the nucleus and cytoplasm. Associated with the nuclear matrix.

图片



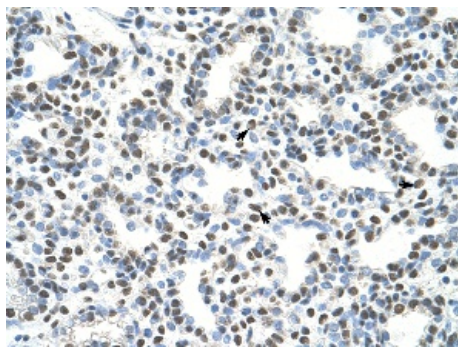
Anti-AKAP8L antibody (ab51342) at 1.25 µg/ml + Jurkat cell lysate at 10 µg

Secondary

HRP conjugated anti-Rabbit IgG (1:100,000)

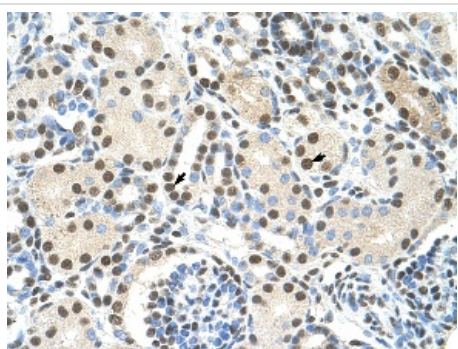
Predicted band size: 72 kDa

Observed band size: 72 kDa



Immunohistochemistry (Formalin/PFA-fixed paraffin-embedded sections) analysis of human lung tissue labelling AKAP8L with ab51342 at 4-8 μ g/ml. Arrows indicate positively labelled alveolar cells. Magnification: 400X.

Immunohistochemistry (Formalin/PFA-fixed paraffin-embedded sections) - Anti-AKAP8L antibody (ab51342)



Immunohistochemistry (Formalin/PFA-fixed paraffin-embedded sections) analysis of human kidney tissue labelling AKAP8L with abAKAP8L at 4-8 μ g/ml. Arrows indicate positively labelled epithelial cells of renal tubule. Magnification: 400X.

Immunohistochemistry (Formalin/PFA-fixed paraffin-embedded sections) - Anti-AKAP8L antibody (ab51342)

Please note: All products are "FOR RESEARCH USE ONLY AND ARE NOT INTENDED FOR DIAGNOSTIC OR THERAPEUTIC USE"

Our Abpromise to you: Quality guaranteed and expert technical support

- Replacement or refund for products not performing as stated on the datasheet
- Valid for 12 months from date of delivery
- Response to your inquiry within 24 hours
- We provide support in Chinese, English, French, German, Japanese and Spanish
- Extensive multi-media technical resources to help you
- We investigate all quality concerns to ensure our products perform to the highest standards

If the product does not perform as described on this datasheet, we will offer a refund or replacement. For full details of the Abpromise, please visit <http://www.abcam.cn/abpromise> or contact our technical team.

Terms and conditions

- Guarantee only valid for products bought direct from Abcam or one of our authorized distributors