

Product datasheet

Anti-Cytokeratin 18 (phospho S33) antibody ab51149

1 图像

概述

产品名称	Anti-Cytokeratin 18 (phospho S33)抗体
描述	兔多克隆抗体 to Cytokeratin 18 (phospho S33)
宿主	Rabbit
经测试应用	适用于: ELISA, IHC-P
种属反应性	与反应: Human
免疫原	Synthetic phosphopeptide derived from human Keratin 18 around the phosphorylation site of serine 33 (A-A-S ^P -V-Y).
阳性对照	Human breast carcinoma tissue.

性能

形式	Liquid
存放说明	Shipped at 4°C. Upon delivery aliquot and store at -20°C. Avoid freeze / thaw cycles.
存储溶液	Preservative: 0.02% Sodium Azide Constituents: 50% Glycerol, PBS, 150mM Sodium chloride, pH 7.4
纯度	Immunogen affinity purified
纯化说明	The antibody was affinity-purified from rabbit antiserum by affinity-chromatography using epitope-specific phosphopeptide. The antibody against non-phosphopeptide was removed by chromatography using non-phosphopeptide corresponding to the phosphorylation site.
克隆	多克隆
同种型	IgG

应用

Our [Abpromise guarantee](#) covers the use of **ab51149** in the following tested applications.

The application notes include recommended starting dilutions; optimal dilutions/concentrations should be determined by the end user.

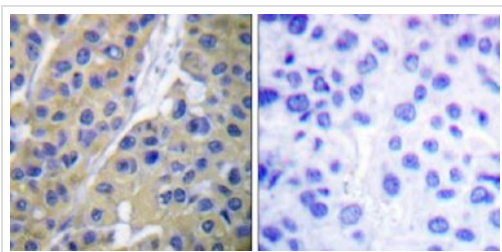
应用	Ab评论	说明
ELISA		1/10000.

应用	Ab评论	说明
IHC-P		Use at an assay dependent concentration.

靶标

功能	Involved in the uptake of thrombin-antithrombin complexes by hepatic cells (By similarity). When phosphorylated, plays a role in filament reorganization. Involved in the delivery of mutated CFTR to the plasma membrane. Together with KRT8, is involved in interleukin-6 (IL-6)-mediated barrier protection.
组织特异性	Expressed in colon, placenta, liver and very weakly in exocervix. Increased expression observed in lymph nodes of breast carcinoma.
疾病相关	Defects in KRT18 are a cause of cirrhosis (CIRRH) [MIM:215600].
序列相似性	Belongs to the intermediate filament family.
翻译后修饰	Phosphorylation at Ser-34 increases during mitosis. Hyperphosphorylated at Ser-53 in diseased cirrhosis liver. Phosphorylation increases by IL-6. Proteolytically cleaved by caspases during epithelial cell apoptosis. Cleavage occurs at Asp-238 by either caspase-3, caspase-6 or caspase-7. O-glycosylated at multiple sites; glycans consist of single N-acetylglucosamine residues.
细胞定位	Cytoplasm > perinuclear region.

图片



This image shows human breast carcinoma tissue stained with ab51149 at 1/50 dilution. In the right hand image the cells were treated with the immunising phospho-peptide, in the left hand image they were not.

Immunohistochemistry (Paraffin-embedded sections)
- Cytokeratin 18 (phospho S33) antibody (ab51149)

Please note: All products are "FOR RESEARCH USE ONLY AND ARE NOT INTENDED FOR DIAGNOSTIC OR THERAPEUTIC USE"

Our Abpromise to you: Quality guaranteed and expert technical support

- Replacement or refund for products not performing as stated on the datasheet
- Valid for 12 months from date of delivery
- Response to your inquiry within 24 hours
- We provide support in Chinese, English, French, German, Japanese and Spanish
- Extensive multi-media technical resources to help you

- We investigate all quality concerns to ensure our products perform to the highest standards

If the product does not perform as described on this datasheet, we will offer a refund or replacement. For full details of the Abpromise, please visit <http://www.abcam.cn/abpromise> or contact our technical team.

Terms and conditions

- Guarantee only valid for products bought direct from Abcam or one of our authorized distributors