


## Product datasheet

# Anti-p38 (phospho T180) antibody ab51050

### 1 图像

#### 概述

<b>产品名称</b>	Anti-p38 (phospho T180)抗体
<b>描述</b>	兔多克隆抗体 to p38 (phospho T180)
<b>特异性</b>	Detects endogenous levels of P38 only when phosphorylated at threonine 180.
<b>经测试应用</b>	<b>适用于:</b> WB, ELISA
<b>种属反应性</b>	<b>与反应:</b> Human <b>预测可用于:</b> Mouse, Rat 
<b>免疫原</b>	Synthetic phosphopeptide derived from human P38 around the phosphorylation site of threonine 180 <a href="#">Run BLAST with ExPASy</a> <a href="#">Run BLAST with NCBI</a>
<b>阳性对照</b>	HeLa cell extract

#### 性能

<b>形式</b>	Liquid
<b>存放说明</b>	Shipped at 4°C. Store at -20°C. Stable for 12 months at -20°C.
<b>存储溶液</b>	Preservative: 0.02% Sodium Azide Constituents: 50% Glycerol, PBS (without Mg <sup>2+</sup> and Ca <sup>2+</sup> ), 150mM Sodium chloride, pH 7.4
<b>纯度</b>	Immunogen affinity purified
<b>纯化说明</b>	Affinity purified from rabbit antiserum by affinity chromatography using epitope specific phosphopeptide. The antibody against non phosphopeptide was removed by chromatography using non phosphopeptide corresponding to the phosphorylation site.
<b>克隆</b>	多克隆
<b>同种型</b>	IgG

#### 应用

Our [Abpromise guarantee](#) covers the use of **ab51050** in the following tested applications.

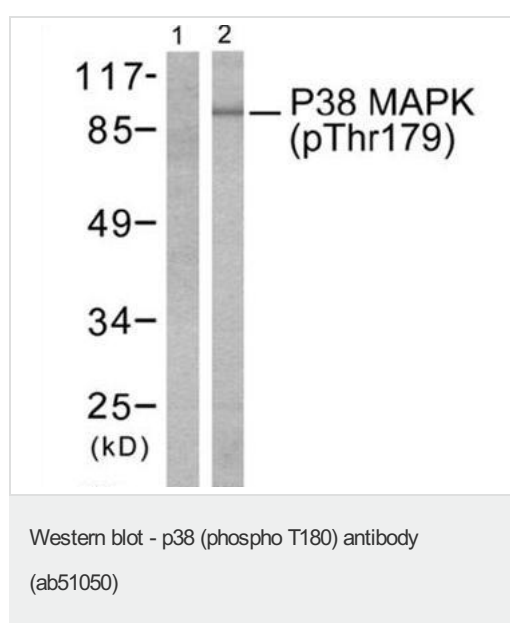
The application notes include recommended starting dilutions; optimal dilutions/concentrations should be determined by the end user.

应用	Ab评论	说明
WB		1/500 - 1/1000. Detects a band of approximately 90 kDa (predicted molecular weight: 41 kDa).
ELISA		1/40000.

## 靶标

<b>功能</b>	Responds to activation by environmental stress, pro-inflammatory cytokines and lipopolysaccharide (LPS) by phosphorylating a number of transcription factors, such as ELK1 and ATF2 and several downstream kinases, such as MAPKAPK2 and MAPKAPK5. Plays a critical role in the production of some cytokines, for example IL-6. May play a role in stabilization of EPO mRNA during hypoxic stress. Isoform Mxi2 activation is stimulated by mitogens and oxidative stress and only poorly phosphorylates ELK1 and ATF2. Isoform Exip may play a role in the early onset of apoptosis.
<b>组织特异性</b>	Brain, heart, placenta, pancreas and skeletal muscle. Expressed to a lesser extent in lung, liver and kidney.
<b>序列相似性</b>	Belongs to the protein kinase superfamily. CMGC Ser/Thr protein kinase family. MAP kinase subfamily. Contains 1 protein kinase domain.
<b>结构域</b>	The TXY motif contains the threonine and tyrosine residues whose phosphorylation activates the MAP kinases.
<b>翻译后修饰</b>	Dually phosphorylated on Thr-180 and Tyr-182, which activates the enzyme. Phosphorylated upon DNA damage, probably by ATM or ATR.
<b>细胞定位</b>	Cytoplasm. Nucleus.

## 图片



**All lanes :** Anti-p38 (phospho T180) antibody (ab51050) at 1/500 dilution

**Lane 1 :** HeLa cell extract treated with TNF alpha (20ng/ml, 5 min)

**Lane 2 :** HeLa cell extract treated with TNF alpha (20ng/ml, 5 min) with phospho peptide

**Predicted band size :** 41 kDa

**Observed band size :** 90 kDa

## **Our Abpromise to you: Quality guaranteed and expert technical support**

---

- Replacement or refund for products not performing as stated on the datasheet
- Valid for 12 months from date of delivery
- Response to your inquiry within 24 hours
  
- We provide support in Chinese, English, French, German, Japanese and Spanish
- Extensive multi-media technical resources to help you
- We investigate all quality concerns to ensure our products perform to the highest standards

If the product does not perform as described on this datasheet, we will offer a refund or replacement. For full details of the Abpromise, please visit <http://www.abcam.cn/abpromise> or contact our technical team.

## **Terms and conditions**

---

- Guarantee only valid for products bought direct from Abcam or one of our authorized distributors