


Product datasheet

Anti-Non Neuronal Enolase antibody ab49256

1 References 1 图像

概述

产品名称	Anti-Non Neuronal Enolase抗体
描述	兔多克隆抗体to Non Neuronal Enolase
宿主	Rabbit
经测试应用	适用于: ELISA, WB
种属反应性	与反应: Human 预测可用于: Mouse, Rat, Sheep, Rabbit, Chicken, Guinea pig, Cow, Dog, Pig, Arabidopsis thaliana, Caenorhabditis elegans, Zebrafish 
免疫原	A region within synthetic peptide: GVGLCTGQIK TGAPCRSERL AKYNQLLRIE EELGSKAKFA GRNFRNPLA, corresponding to C terminal amino acids 386-434 of Human Non Neuronal Enolase Run BLAST with ExPASy Run BLAST with NCBI
阳性对照	Jurkat cell lysate.

性能

形式	Liquid
存放说明	Shipped at 4°C. Upon delivery aliquot and store at -20°C. Avoid freeze / thaw cycles.
存储溶液	Preservative: None Constituents: 2% Sucrose, PBS
纯度	Protein A purified
克隆	多克隆
同种型	IgG

应用

Our [Abpromise guarantee](#) covers the use of **ab49256** in the following tested applications.

The application notes include recommended starting dilutions; optimal dilutions/concentrations should be determined by the end user.

应用	Ab 评论	说明
ELISA		Use at an assay dependent concentration. ELISA titre using peptide based assay: 1:62500.
WB		Use a concentration of 1.25 µg/ml. Detects a band of approximately 48 kDa (predicted molecular weight: 48 kDa). Good results were obtained when blocked with 5% non-fat dry milk in 0.05% PBS-T.

靶标

功能 Multifunctional enzyme that, as well as its role in glycolysis, plays a part in various processes such as growth control, hypoxia tolerance and allergic responses. May also function in the intravascular and pericellular fibrinolytic system due to its ability to serve as a receptor and activator of plasminogen on the cell surface of several cell-types such as leukocytes and neurons. Stimulates immunoglobulin production.

MBP1 binds to the myc promoter and acts as a transcriptional repressor. May be a tumor suppressor.

组织特异性 The alpha/alpha homodimer is expressed in embryo and in most adult tissues. The alpha/beta heterodimer and the beta/beta homodimer are found in striated muscle, and the alpha/gamma heterodimer and the gamma/gamma homodimer in neurons.

通路 Carbohydrate degradation; glycolysis; pyruvate from D-glyceraldehyde 3-phosphate: step 4/5.

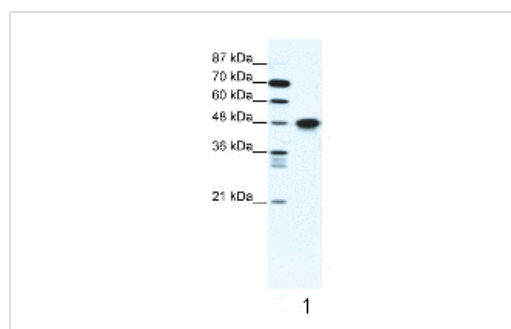
序列相似性 Belongs to the enolase family.

发展阶段 During ontogenesis, there is a transition from the alpha/alpha homodimer to the alpha/beta heterodimer in striated muscle cells, and to the alpha/gamma heterodimer in nerve cells.

翻译后修饰 ISGylated.

细胞定位 Nucleus and Cytoplasm. Cell membrane. Cytoplasm > myofibril > sarcomere > M line. Can translocate to the plasma membrane in either the homodimeric (alpha/alpha) or heterodimeric (alpha/gamma) form. ENO1 is localized to the M line.

图片



Western blot - Non Neuronal Enolase antibody (ab49256)

Anti-Non Neuronal Enolase antibody (ab49256) at 1.25 µg/ml + Jurkat cell lysate at 10 µg

Secondary

HRP conjugated anti-Rabbit IgG 1/50,000 - 1/100,000

Predicted band size: 48 kDa

Observed band size: 48 kDa

Our Abpromise to you: Quality guaranteed and expert technical support

- Replacement or refund for products not performing as stated on the datasheet
- Valid for 12 months from date of delivery
- Response to your inquiry within 24 hours

- We provide support in Chinese, English, French, German, Japanese and Spanish
- Extensive multi-media technical resources to help you
- We investigate all quality concerns to ensure our products perform to the highest standards

If the product does not perform as described on this datasheet, we will offer a refund or replacement. For full details of the Abpromise, please visit <http://www.abcam.cn/abpromise> or contact our technical team.

Terms and conditions

- Guarantee only valid for products bought direct from Abcam or one of our authorized distributors