

Product datasheet

Anti-Paxillin antibody ab47469

2 图像

概述

产品名称	Anti-Paxillin抗体
描述	兔多克隆抗体to Paxillin
宿主	Rabbit
特异性	This antibody detects endogenous levels of total Paxillin protein.
经测试应用	适用于: WB, IHC-P, ELISA
种属反应性	与反应: Human
免疫原	A synthesized non-phosphopeptide derived from human Paxillin around the phosphorylation site of tyrosine 31 (T-P-Y ^P -S-Y).
阳性对照	SK-OV3 cell extracts and human breast carcinoma tissue

性能

形式	Liquid
存放说明	Shipped at 4°C. Upon delivery aliquot and store at -20°C. Avoid freeze / thaw cycles.
存储溶液	Preservative: 0.02% Sodium Azide Constituents: 50% Glycerol, PBS, 150mM Sodium chloride, pH 7.4
纯度	Immunogen affinity purified
纯化说明	The antibody was affinity-purified from rabbit antiserum by affinity-chromatography using epitope-specific immunogen.
克隆	多克隆
同种型	IgG

应用

Our [Abpromise guarantee](#) covers the use of **ab47469** in the following tested applications.

The application notes include recommended starting dilutions; optimal dilutions/concentrations should be determined by the end user.

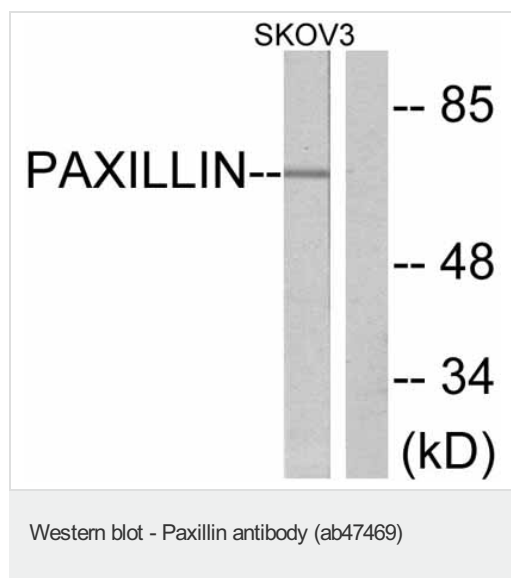
应用	Ab评论	说明
WB		1/500 - 1/1000. Detects a band of approximately 64 kDa (predicted molecular weight: 64 kDa).

应用	Ab评论	说明
IHC-P		Use at an assay dependent concentration.
ELISA		1/20000.

靶标

功能	Cytoskeletal protein involved in actin-membrane attachment at sites of cell adhesion to the extracellular matrix (focal adhesion).
序列相似性	Belongs to the paxillin family. Contains 4 LIM zinc-binding domains.
翻译后修饰	Phosphorylated on tyrosine residues during integrin-mediated cell adhesion, embryonic development, fibroblast transformation and following stimulation of cells by mitogens.
细胞定位	Cytoplasm > cytoskeleton. Cell junction > focal adhesion.

图片



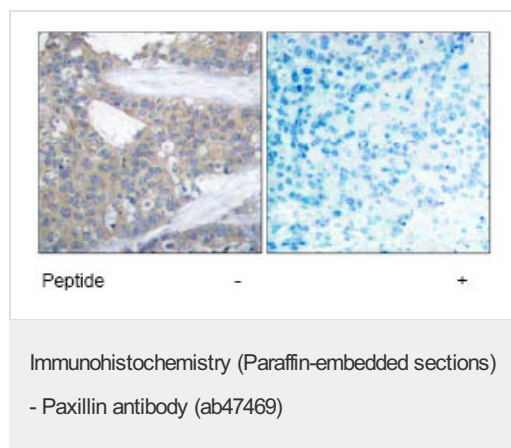
All lanes : Anti-Paxillin antibody (ab47469) at 1/500 dilution

Lane 1 : SK-OV3 cell extracts treated with estradiol (0.1 μ M, 20min)

Lane 2 : SK-OV3 cell extracts treated with estradiol (0.1 μ M, 20min) with synthetic peptide

Predicted band size: 64 kDa

Observed band size: 64 kDa



Immunohistochemical analysis of paraffin-embedded human breast carcinoma tissue using ab47469 at a 1/50 dilution.

Our Abpromise to you: Quality guaranteed and expert technical support

- Replacement or refund for products not performing as stated on the datasheet
- Valid for 12 months from date of delivery
- Response to your inquiry within 24 hours

- We provide support in Chinese, English, French, German, Japanese and Spanish
- Extensive multi-media technical resources to help you
- We investigate all quality concerns to ensure our products perform to the highest standards

If the product does not perform as described on this datasheet, we will offer a refund or replacement. For full details of the Abpromise, please visit <http://www.abcam.cn/abpromise> or contact our technical team.

Terms and conditions

- Guarantee only valid for products bought direct from Abcam or one of our authorized distributors