


Product datasheet

Anti-SMC1 antibody ab47415

1 Abreviews 1 图像

概述

产品名称	Anti-SMC1抗体
描述	兔多克隆抗体to SMC1
特异性	This antibody detects endogenous levels of total SMC1 protein.
经测试应用	适用于: IHC-P, ELISA 不适用于: ICC/IF
种属反应性	与反应: Human 预测可用于: Mouse 
免疫原	Synthetic non-phosphopeptide derived from human SMC1 around the phosphorylation site of serine 957 (G-S-S <sup>P</sup> -Q-G).
阳性对照	Human breast carcinoma tissue

性能

形式	Liquid
存放说明	Shipped at 4°C. Store at -20°C. Stable for 12 months at -20°C.
存储溶液	Preservative: 0.02% Sodium Azide Constituents: 50% Glycerol, PBS (without Mg <sup>2+</sup> and Ca <sup>2+</sup> ), 150mM Sodium chloride, pH 7.4
纯度	Immunogen affinity purified
纯化说明	This antibody was purified from rabbit antiserum by affinity-chromatography using epitope-specific immunogen.
克隆	多克隆
同种型	IgG

应用

Our [Abpromise guarantee](#) covers the use of **ab47415** in the following tested applications.

The application notes include recommended starting dilutions; optimal dilutions/concentrations should be determined by the end user.

应用	Ab评论	说明
----	------	----

IHC-P

ELISA

#### 应用说明

ELISA: 1/10000.  
IHC-P: 1/50 - 1/100.

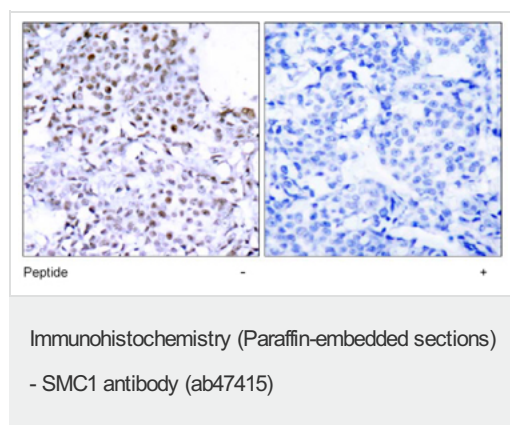
This antibody does not seem to be suitable to use in ICC/IF - please see abreview.

Not yet tested in other applications.

Optimal dilutions/concentrations should be determined by the end user.

#### 靶标

#### 图片



Immunohistochemical analysis of paraffin-embedded human breast carcinoma tissue in the presence (right) and absence (left) of synthetic peptide, using ab47415 at 1/50 dilution.

**Please note:** All products are "FOR RESEARCH USE ONLY AND ARE NOT INTENDED FOR DIAGNOSTIC OR THERAPEUTIC USE"

#### Our Abpromise to you: Quality guaranteed and expert technical support

- Replacement or refund for products not performing as stated on the datasheet
- Valid for 12 months from date of delivery
- Response to your inquiry within 24 hours
- We provide support in Chinese, English, French, German, Japanese and Spanish
- Extensive multi-media technical resources to help you
- We investigate all quality concerns to ensure our products perform to the highest standards

If the product does not perform as described on this datasheet, we will offer a refund or replacement. For full details of the Abpromise, please visit <http://www.abcam.cn/abpromise> or contact our technical team.

## Terms and conditions

---

- Guarantee only valid for products bought direct from Abcam or one of our authorized distributors