

Product datasheet

Anti-Hsp27 (phospho S78) antibody ab47338

1 References 2 图像

概述

产品名称	Anti-Hsp27 (phospho S78)抗体
描述	兔多克隆抗体to Hsp27 (phospho S78)
宿主	Rabbit
特异性	This antibody is specific for Hsp27, only when phosphorylated at serine 78.
经测试应用	适用于: WB, ELISA
种属反应性	与反应: Human
免疫原	A synthesized phosphopeptide derived from human Hsp27 around the phosphorylation site of serine 78 (A-L-S _P -R-Q)
阳性对照	Extracts from heat shocked Hela cells

性能

形式	Liquid
存放说明	Shipped at 4°C. Upon delivery aliquot and store at -20°C. Avoid freeze / thaw cycles.
存储溶液	Preservative: 0.02% Sodium Azide Constituents: 50% Glycerol, PBS, 150mM Sodium chloride, pH 7.4
纯度	Immunogen affinity purified
纯化说明	The antibody was affinity-purified from rabbit antiserum by affinity-chromatography using epitope-specific phosphopeptide. The antibody against non-phosphopeptide was removed by chromatography using non-phosphopeptide corresponding to the phosphorylation site.
克隆	多克隆
同种型	IgG

应用

Our [Abpromise guarantee](#) covers the use of **ab47338** in the following tested applications.

The application notes include recommended starting dilutions; optimal dilutions/concentrations should be determined by the end user.

应用	Ab评论	说明
WB		1/500 - 1/1000. Detects a band of approximately 27 kDa (predicted molecular weight: 23 kDa).
ELISA		1/20000.

靶标

功能

Involved in stress resistance and actin organization.

组织特异性

Detected in all tissues tested: skeletal muscle, heart, aorta, large intestine, small intestine, stomach, esophagus, bladder, adrenal gland, thyroid, pancreas, testis, adipose tissue, kidney, liver, spleen, cerebral cortex, blood serum and cerebrospinal fluid. Highest levels are found in the heart and in tissues composed of striated and smooth muscle.

疾病相关

Defects in HSPB1 are the cause of Charcot-Marie-Tooth disease type 2F (CMT2F) [MIM:606595]. CMT2F is a form of Charcot-Marie-Tooth disease, the most common inherited disorder of the peripheral nervous system. Charcot-Marie-Tooth disease is classified in two main groups on the basis of electrophysiologic properties and histopathology: primary peripheral demyelinating neuropathy or CMT1, and primary peripheral axonal neuropathy or CMT2. Neuropathies of the CMT2 group are characterized by signs of axonal regeneration in the absence of obvious myelin alterations, normal or slightly reduced nerve conduction velocities, and progressive distal muscle weakness and atrophy. Nerve conduction velocities are normal or slightly reduced. CMT2F onset is between 15 and 25 years with muscle weakness and atrophy usually beginning in feet and legs (peroneal distribution). Upper limb involvement occurs later. CMT2F inheritance is autosomal dominant.

Defects in HSPB1 are a cause of distal hereditary motor neuronopathy type 2B (HMN2B) [MIM:608634]. Distal hereditary motor neuronopathies constitute a heterogeneous group of neuromuscular disorders caused by selective impairment of motor neurons in the anterior horn of the spinal cord, without sensory deficit in the posterior horn. The overall clinical picture consists of a classical distal muscular atrophy syndrome in the legs without clinical sensory loss. The disease starts with weakness and wasting of distal muscles of the anterior tibial and peroneal compartments of the legs. Later on, weakness and atrophy may expand to the proximal muscles of the lower limbs and/or to the distal upper limbs.

序列相似性

Belongs to the small heat shock protein (HSP20) family.

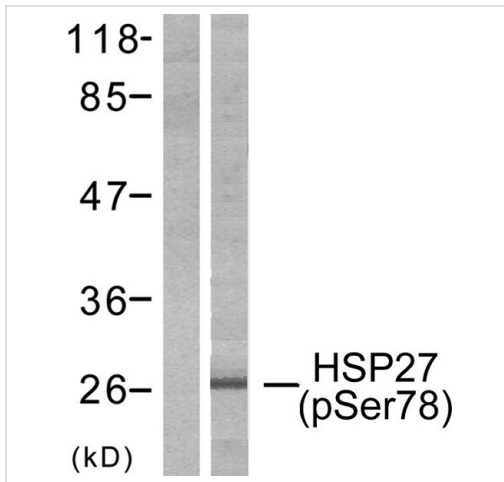
翻译后修饰

Phosphorylated in MCF-7 cells on exposure to protein kinase C activators and heat shock.

细胞定位

Cytoplasm. Nucleus. Cytoplasm > cytoskeleton > spindle. Cytoplasmic in interphase cells. Colocalizes with mitotic spindles in mitotic cells. Translocates to the nucleus during heat shock and resides in sub-nuclear structures known as SC35 speckles or nuclear splicing speckles.

图片



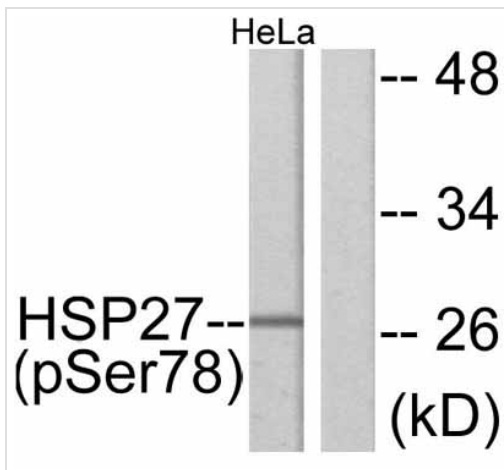
Western blot - Anti-Hsp27 (phospho S78) antibody (ab47338)

All lanes : Anti-Hsp27 (phospho S78) antibody (ab47338)

Lane 1 : HeLa cell lysates treated with Ca²⁺ with phospho peptide

Lane 2 : HeLa cell lysates treated with Ca²⁺

Predicted band size: 23 kDa



Western blot - Hsp27 (phospho S78) antibody (ab47338)

All lanes : Anti-Hsp27 (phospho S78) antibody (ab47338) at 1/500 dilution

Lane 1 : Extracts of HeLa cells, treated with Ca²⁺

Lane 2 : Extracts of HeLa cells, untreated

Predicted band size: 23 kDa

Observed band size: 27 kDa

Please note: All products are "FOR RESEARCH USE ONLY AND ARE NOT INTENDED FOR DIAGNOSTIC OR THERAPEUTIC USE"

Our Abpromise to you: Quality guaranteed and expert technical support

- Replacement or refund for products not performing as stated on the datasheet
- Valid for 12 months from date of delivery
- Response to your inquiry within 24 hours
- We provide support in Chinese, English, French, German, Japanese and Spanish
- Extensive multi-media technical resources to help you
- We investigate all quality concerns to ensure our products perform to the highest standards

If the product does not perform as described on this datasheet, we will offer a refund or replacement. For full details of the Abpromise, please visit <http://www.abcam.cn/abpromise> or contact our technical team.

Terms and conditions

- Guarantee only valid for products bought direct from Abcam or one of our authorized distributors