

Product datasheet

Anti-ATP Synthase beta antibody ab43176

2 References 2 图像

概述

产品名称	Anti-ATP Synthase beta 抗体
描述	鸡多克隆抗体 to ATP Synthase beta
宿主	Chicken
特异性	This antibody will detect the mitochondrial form of the F1 ATP Synthase subcomplex, as well as the chloroplastic CF1 Atp Synthase, and most known bacterial F-type Atp Synthases. This antibody will not cross-react with -V-type ATP Synthase, found mainly in Archaea.
经测试应用	适用于: WB
种属反应性	Chloroplasts, mitochondria and most bacteria.
免疫原	Peptide used for antibody production is located in a beta sheet, which is partly exposed near the surface of the ATP Synthase beta protein.

性能

形式	Liquid
存放说明	Shipped at 4°C. Upon delivery aliquot and store at -20°C or -80°C. Avoid repeated freeze / thaw cycles.
存储溶液	Preservative: None Constituents: PBS
纯度	IgY fraction
纯化说明	IgY fraction, around 80% pure.
克隆	多克隆
同种型	IgY

应用

Our [Abpromise guarantee](#) covers the use of **ab43176** in the following tested applications.

The application notes include recommended starting dilutions; optimal dilutions/concentrations should be determined by the end user.

应用	Ab评论	说明
WB		

应用说明

WB: 1/5000 - 1/50000. Detects a band of approximately 55 kDa (predicted molecular weight: 59 kDa).

Immunolocalization: Use at an assay-dependent dilution.

Not yet tested in other applications.

Optimal dilutions/concentrations should be determined by the end user.

靶标

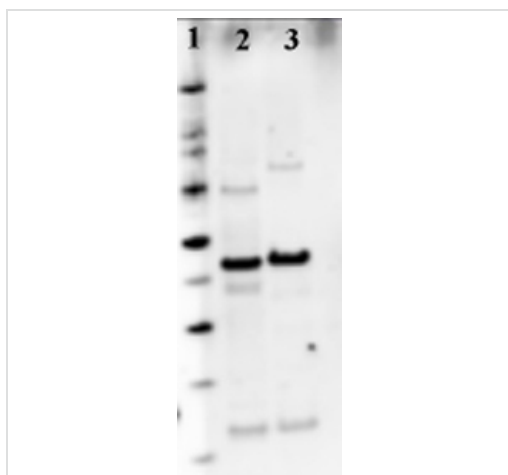
相关性

Mitochondrial membrane ATP synthase produces ATP from ADP in the presence of a proton gradient across the membrane which is generated by electron transport complexes of the respiratory chain. F-type ATPases consist of two structural domains, F(1) - containing the extramembraneous catalytic core, and F(0) - containing the membrane proton channel, linked together by a central stalk and a peripheral stalk.

细胞定位

Mitochondrion. Mitochondrion inner membrane. Note=Peripheral membrane protein.

图片



Western blot - Anti-ATP Synthase beta antibody
(ab43176)

All lanes : Anti-ATP Synthase beta antibody
(ab43176) at 1/5000 dilution

Lane 1 : Markers 20, 30, 40, 50, 60, 80, 100,
120, 220kDa.

Lane 2 : Extract of Synechocystis

Lane 3 : Isolated thylakoid fraction of Spinach

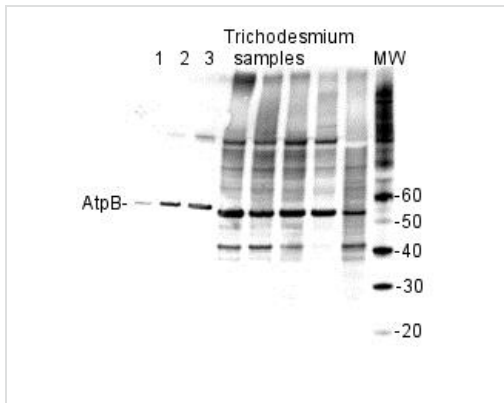
Secondary

All lanes : HRP-conjugated anti IgY, from
Abcam at 1/50000 dilution

Developed using the ECL technique.

Predicted band size: 59 kDa

Observed band size: 52,54 kDa



Western blot - Anti-ATP Synthase beta antibody (ab43176)

Lanes 1-3: ATP Synthase beta protein standard 0.03, 0.1, 0.26 pmol. Lanes 4-8: Total protein from Trichodesmium IMS 101 extracted with PEB. Samples were separated on 4-12% SDS-PAGE and blotted for 1 hour to PVDF and blocked immediately following transfer in 2% ECL blocking reagent in 20 mM Tris, 137 mM sodium chloride pH 7.6 with 0.1% (v/v) Tween-20 (TBS-T) for 1 hour at room temperature with agitation. Blots were incubated in the primary antibody (ab43176) at 1/50000 for 1 hour at room temperature with agitation. The antibody solution was decanted and the blot was rinsed briefly twice, then washed once for 15 minutes and 3 times for 5 minutes in TBS-T at room temperature with agitation. Blots were incubated in secondary antibody (HRP-conjugated anti-IgY) diluted to 1/50000 in 2% ECL blocking solution for 1 hour at room temperature with agitation. The blots were washed as above and developed for 5 minutes with ECL detection reagent. Exposure time was 10 seconds.

Please note: All products are "FOR RESEARCH USE ONLY AND ARE NOT INTENDED FOR DIAGNOSTIC OR THERAPEUTIC USE"

Our Abpromise to you: Quality guaranteed and expert technical support

- Replacement or refund for products not performing as stated on the datasheet
- Valid for 12 months from date of delivery
- Response to your inquiry within 24 hours
- We provide support in Chinese, English, French, German, Japanese and Spanish
- Extensive multi-media technical resources to help you
- We investigate all quality concerns to ensure our products perform to the highest standards

If the product does not perform as described on this datasheet, we will offer a refund or replacement. For full details of the Abpromise, please visit <http://www.abcam.cn/abpromise> or contact our technical team.

Terms and conditions

- Guarantee only valid for products bought direct from Abcam or one of our authorized distributors