

Product datasheet

Anti-PAG antibody [PAG-C1] ab4206

2 References 3 图像

概述

产品名称	Anti-PAG抗体[PAG-C1]
描述	小鼠单克隆抗体[PAG-C1] to PAG
经测试应用	适用于: IHC-P, IP, WB, Flow Cyt
种属反应性	与反应: Mouse, Rat, Cow, Human
免疫原	Synthetic C-terminal peptide (last 15 amino acids) (Human) conjugated to KLH.
表位	Located in the C-terminal domain.
阳性对照	Human Ramos cell line, Raji cell line Mouse spleen cells

性能

形式	Liquid
存放说明	Shipped at 4°C. Store at +4°C short term (1-2 weeks). Upon delivery aliquot. Store at -20°C or -80°C. Avoid freeze / thaw cycle.
存储溶液	Preservative: 15mM Sodium Azide Constituents: PBS, pH 7.4
纯度	>95% by SDS-PAGE
纯化说明	Purified from hybridoma culture supernatant by protein A affinity chromatography.
克隆	单克隆
克隆编号	PAG-C1
同种型	IgG2b

应用

Our [Abpromise guarantee](#) covers the use of **ab4206** in the following tested applications.

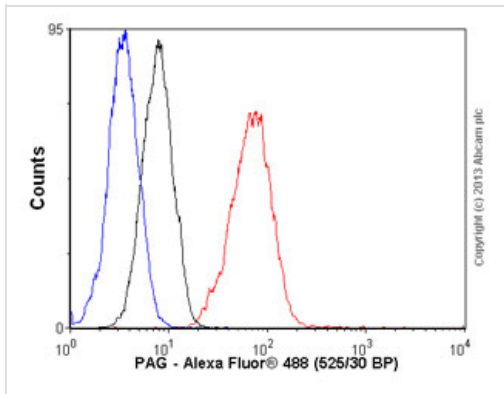
The application notes include recommended starting dilutions; optimal dilutions/concentrations should be determined by the end user.

应用	Ab 评论	说明
IHC-P		Use at an assay dependent concentration.
IP		Use at an assay dependent concentration. Use covalently bound ab4206 to Sepharose beads as immunosorbent. This method of precipitation obviously differs from protein A/G-sepharose or Goat xMs Sepharose mediated immunoprecipitation protocols.
WB		Use at an assay dependent concentration. This antibody can be used for WB, but the signal is very faint, and we do not recommend or guarantee it for this method. We recommend the clone MEM-255 (ab9527) or the rabbit polyclonal ab14989 , which are much better for WB.
Flow Cyt		Use 1µg for 10 ⁶ cells.

靶标

功能	Negatively regulates TCR (T-cell antigen receptor)-mediated signaling in T-cells and FCER1 (high affinity immunoglobulin epsilon receptor)-mediated signaling in mast cells. Promotes CSK activation and recruitment to lipid rafts, which results in LCK inhibition. Inhibits immunological synapse formation by preventing dynamic arrangement of lipid raft proteins. May be involved in cell adhesion signaling.
组织特异性	Ubiquitously expressed. Present in germinal center B-cells, plasma cells, T-cells, monocytes and platelets (at protein level).
翻译后修饰	Palmitoylated. Phosphorylated by FYN on Tyr-317 in resting T-cells; which promotes interaction with CSK. Dephosphorylated by PTPRC/CD45 upon TCR activation; which leads to CSK dissociation. May also be dephosphorylated by PTPN11. Hyperphosphorylated in mast cells upon FCER1 activation.
细胞定位	Cell membrane. Present in lipid rafts.

图片



Flow Cytometry - Anti-PAG antibody [PAG-C1]
(ab4206)

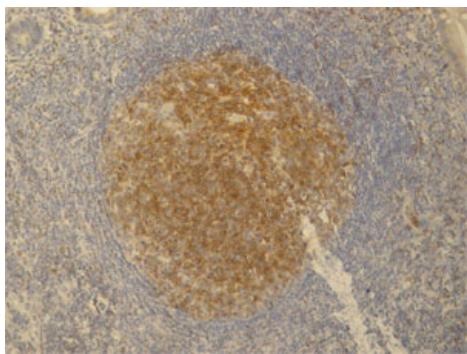
Overlay histogram showing Jurkat cells stained with ab4206 (red line). The cells were fixed with 4% paraformaldehyde (10 min) and then permeabilized with 0.1% PBS-Tween for 20 min. The cells were then incubated in 1x PBS / 10% normal goat serum / 0.3M glycine to block non-specific protein-protein interactions followed by the antibody (ab4206, 1µg/1x10⁶ cells) for 30 min at 22°C. The secondary antibody used was Alexa Fluor® 488 goat anti-mouse IgG (H+L) (ab150113) at 1/2000 dilution for 30 min at 22°C. Isotype control antibody (black line) was mouse IgG2b [PLPV219] (ab91366, 1µg/1x10⁶ cells) used under the same conditions. Unlabelled sample (blue line) was also used as a control. Acquisition of >5,000 events were collected using a 20mW Argon ion laser (488nm) and 525/30 bandpass filter. This antibody gave a positive signal in Jurkat cells fixed with 80% methanol (5 min)/permeabilized with 0.1% PBS-Tween for 20 min used under the same conditions.



Immunoprecipitation

1. Frozen Raji cells lysate, immunoprecipitated with ab4206
 2. Fresh Raji cells lysate, immunoprecipitated with ab4206
 3. Frozen Raji cells lysate, immunoprecipitated with ab14989
- Reprobe with ab9527.

The immunoprecipitation used covalently bound antibody to Sepharose beads as immunosorbent. This method of precipitation obviously differs from proteinA/G-sepharose or GoatXMs -Sepharose mediated immunoprecipitation protocols.



Immunohistochemistry (Formalin/PFA-fixed paraffin-embedded sections) - PAG antibody [PAG-C1] (ab4206)

ab4206 staining PAG in human germinal center of lymphatic follicle and in dispersed T cells in appendix tissue section by immunohistochemistry (Formalin/ PFA fixed paraffin embedded tissue sections). Tissue underwent heat mediated antigen retrieval in citrate buffer pH 6.1. The image shows positive signal in T-cells.

Please note: All products are "FOR RESEARCH USE ONLY AND ARE NOT INTENDED FOR DIAGNOSTIC OR THERAPEUTIC USE"

Our Abpromise to you: Quality guaranteed and expert technical support

- Replacement or refund for products not performing as stated on the datasheet
- Valid for 12 months from date of delivery
- Response to your inquiry within 24 hours
- We provide support in Chinese, English, French, German, Japanese and Spanish
- Extensive multi-media technical resources to help you
- We investigate all quality concerns to ensure our products perform to the highest standards

If the product does not perform as described on this datasheet, we will offer a refund or replacement. For full details of the Abpromise, please visit <http://www.abcam.cn/abpromise> or contact our technical team.

Terms and conditions

- Guarantee only valid for products bought direct from Abcam or one of our authorized distributors