

Product datasheet

Anti-Apc5 antibody ab4170

★★★★☆ 2 Abreviews 1 References 1 图像

概述

| | |
|-------|--|
| 产品名称 | Anti-Apc5抗体 |
| 描述 | 兔多克隆抗体to Apc5 |
| 经测试应用 | 适用于: ICC/IF, ICC |
| 种属反应性 | 与反应: Human |
| 免疫原 | Synthetic peptide derived from residues 250 - 350 of Human Apc5 conjugated to KLH. 参阅 Abcam的专有抗源政策 |
| 阳性对照 | This antibody gave a positive signal in HeLa cells in IF |

性能

| | |
|------|--|
| 形式 | Liquid |
| 存放说明 | Shipped at 4°C. Store at +4°C short term (1-2 weeks). Upon delivery aliquot. Store at -20°C or -80°C. Avoid freeze / thaw cycle. |
| 存储溶液 | Preservative: 0.02% Sodium Azide Constituents: 1% BSA, PBS, pH 7.4 |
| 纯度 | Immunogen affinity purified |
| 克隆 | 多克隆 |
| 同种型 | IgG |

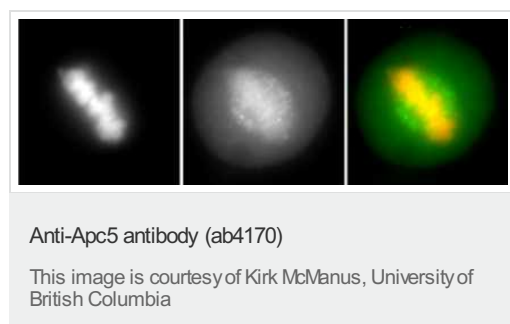
应用

Our [Abpromise guarantee](#) covers the use of **ab4170** in the following tested applications. The application notes include recommended starting dilutions; optimal dilutions/concentrations should be determined by the end user.

| 应用 | Ab评论 | 说明 |
|--------|-------|--|
| ICC/IF | ★★★★☆ | Use at an assay dependent concentration. |
| ICC | ★★★★☆ | 1/100. |

| | |
|--------------|---|
| 功能 | Component of the anaphase promoting complex/cyclosome (APC/C), a cell cycle-regulated E3 ubiquitin ligase that controls progression through mitosis and the G1 phase of the cell cycle. The APC/C complex acts by mediating ubiquitination and subsequent degradation of target proteins: it mainly mediates the formation of 'Lys-11'-linked polyubiquitin chains and, to a lower extent, the formation of 'Lys-48'- and 'Lys-63'-linked polyubiquitin chains. |
| 通路 | Protein modification; protein ubiquitination. |
| 序列相似性 | Belongs to the APC5 family. Contains 4 TPR repeats. |

图片



Metaphase HeLa cells labelled with APC5 (ab4170) and counterstained with DAPI. The antibody shows foci of APC5 localised to the centrosomes. 100x magnification.

Panel 1: DNA stained with DAPI
Panel 2: Cells stained with ab4170 (1/100 dilution)
Panel 3: DAPI staining is shown in red, ab4170 staining is shown in green

Metaphase HeLa cells labelled with APC5 (ab4170) and counterstained with DAPI. The antibody shows foci of APC5 localised to the centrosomes. 100x magnification.

Panel 1: DNA stained with DAPI
Panel 2: Cells stained with ab4170 (1/100 dilution)
Panel 3: DAPI staining is shown in red, ab4170 staining is shown in green

Please note: All products are "FOR RESEARCH USE ONLY AND ARE NOT INTENDED FOR DIAGNOSTIC OR THERAPEUTIC USE"

Our Abpromise to you: Quality guaranteed and expert technical support

- Replacement or refund for products not performing as stated on the datasheet
- Valid for 12 months from date of delivery

- Response to your inquiry within 24 hours
- We provide support in Chinese, English, French, German, Japanese and Spanish
- Extensive multi-media technical resources to help you
- We investigate all quality concerns to ensure our products perform to the highest standards

If the product does not perform as described on this datasheet, we will offer a refund or replacement. For full details of the Abpromise, please visit <http://www.abcam.cn/abpromise> or contact our technical team.

Terms and conditions

- Guarantee only valid for products bought direct from Abcam or one of our authorized distributors