

Product datasheet

Anti-RASA1 antibody ab40807

★★★★★ 1 Abreviews 1 References 1 图像

概述

产品名称	Anti-RASA1抗体
描述	兔多克隆抗体to RASA1
宿主	Rabbit
经测试应用	适用于: WB, IHC-P, ICC, IP 不适用于: Flow Cyt
种属反应性	与反应: Mouse, Rat, Human
免疫原	Synthetic peptide (the amino acid sequence is considered to be commercially sensitive) corresponding to Human RASA1 aa 1000-1100 (C terminal).
阳性对照	Human breast carcinoma tissue and rat brain lysate.

性能

形式	Liquid
存放说明	Shipped at 4°C. Upon delivery aliquot and store at -20°C. Avoid freeze / thaw cycles.
存储溶液	PBS 49%,Sodium azide 0.01%,Glycerol 50%,BSA 0.05%
纯度	Immunogen affinity purified
克隆	多克隆
同种型	IgG

应用

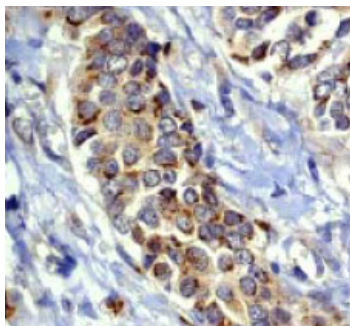
Our [Abpromise guarantee](#) covers the use of **ab40807** in the following tested applications.

The application notes include recommended starting dilutions; optimal dilutions/concentrations should be determined by the end user.

应用	Ab评论	说明
WB	★★★★★	1/1000 - 1/5000. Predicted molecular weight: 96 kDa.
IHC-P		Use at an assay dependent concentration.
ICC		1/100 - 1/250.

应用	Ab评论	说明
IP		1/50.
应用说明		Is unsuitable for Flow Cyt.
靶标		
功能		Inhibitory regulator of the Ras-cyclic AMP pathway. Stimulates the GTPase of normal but not oncogenic Ras p21.
组织特异性		In placental villi, detected only in the trophoblast layer (cytotrophoblast and syncytiotrophoblast). Not detected in stromal, endothelial or Hofbauer cells (at protein level).
疾病相关		Note=Mutations in the SH2 domain of RASA seem to be oncogenic and cause basal cell carcinomas. Defects in RASA1 are the cause of capillary malformation-arteriovenous malformation (CMAVM) [MIM:608354]. CMAVM is a disorder characterized by atypical capillary malformations that are multiple, small, round to oval in shape and pinkish red in color. These capillary malformations are associated with either arteriovenous malformation, arteriovenous fistula, or Parkes Weber syndrome. Defects in RASA1 are a cause of Parkes Weber syndrome (PKWS) [MIM:608355]. PKWS is a disorder characterized by a cutaneous flush with underlying multiple micro-arteriovenous fistulas, in association with soft tissue and skeletal hypertrophy of the affected limb.
序列相似性		Contains 1 C2 domain. Contains 1 PH domain. Contains 1 Ras-GAP domain. Contains 2 SH2 domains. Contains 1 SH3 domain.
翻译后修饰		The N-terminus is blocked.
细胞定位		Cytoplasm.

图片



ab40807 at a 1:100 dilution staining RASA1 in Human breast carcinoma tissue.

Immunohistochemistry - Anti-RASA1 antibody (ab40807)

Our Abpromise to you: Quality guaranteed and expert technical support

- Replacement or refund for products not performing as stated on the datasheet
- Valid for 12 months from date of delivery
- Response to your inquiry within 24 hours

- We provide support in Chinese, English, French, German, Japanese and Spanish
- Extensive multi-media technical resources to help you
- We investigate all quality concerns to ensure our products perform to the highest standards

If the product does not perform as described on this datasheet, we will offer a refund or replacement. For full details of the Abpromise, please visit <http://www.abcam.cn/abpromise> or contact our technical team.

Terms and conditions

- Guarantee only valid for products bought direct from Abcam or one of our authorized distributors