

Product datasheet

Anti-Estrogen Receptor alpha antibody ab37438

★★★★☆ 5 Abreviews 19 References 5 图像

概述

产品名称	Anti-Estrogen Receptor alpha抗体
描述	兔多克隆抗体to Estrogen Receptor alpha
宿主	Rabbit
特异性	Ab37438 is specific for Estrogen Receptor alpha as demonstrated by western blot using recombinant protein and IHC on confirmed Estrogen Receptor positive ductal carcinoma. Please note however that IF positive staining has been demonstrated in HeLa cells which have been reported to be ER alpha negative. Please see IF image below for HeLa staining.
经测试应用	适用于: IHC-FoFr, IHC-P, WB, ICC/IF
种属反应性	与反应: Mouse, Rat, Human, Xenopus laevis 预测可用于: Horse, Cat, Pig ▲
免疫原	Synthetic peptide conjugated to KLH derived from within residues 200 - 300 of Human Estrogen Receptor alpha.参阅Abcam的 专有抗源政策 (Peptide available as ab37519 .)
阳性对照	This antibody gave a positive signal in IF in HeLa, HepG2, MCF7 and Hek293; and a positive signal in IHC in ER positive Human breast ductal carcinoma. The antibody gave a positive signal in WB against recombinant protein.

性能

形式	Liquid
存放说明	Shipped at 4°C. Store at +4°C short term (1-2 weeks). Upon delivery aliquot. Store at -20°C or -80°C. Avoid freeze / thaw cycle.
存储溶液	pH: 7.40 Preservative: 0.02% Sodium azide Constituent: PBS
纯度	Immunogen affinity purified
克隆	多克隆
同种型	IgG

Batches of this product that have a concentration < 1mg/ml may have BSA added as a stabilising agent. If you would like information about the formulation of a specific lot, please contact our scientific support team who will be happy to help.

应用

Our [Abpromise guarantee](#) covers the use of **ab37438** in the following tested applications.

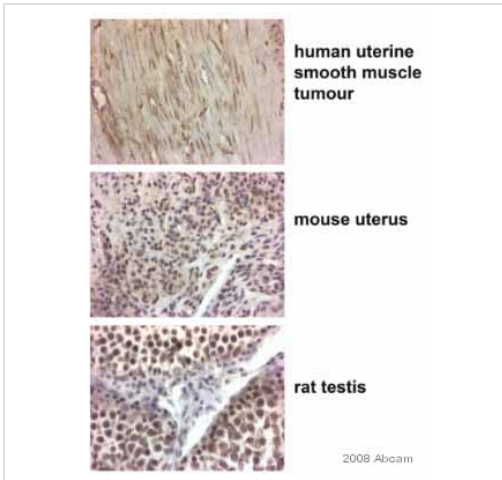
The application notes include recommended starting dilutions; optimal dilutions/concentrations should be determined by the end user.

应用	Ab评论	说明
IHC-FoFr	★★★★★	Use at an assay dependent concentration.
IHC-P	★★★★★	Use a concentration of 5 µg/ml.
WB	★☆☆☆☆	Use a concentration of 1 µg/ml. Predicted molecular weight: 66 kDa.
ICC/IF		Use a concentration of 5 µg/ml.

靶标

功能	Nuclear hormone receptor. The steroid hormones and their receptors are involved in the regulation of eukaryotic gene expression and affect cellular proliferation and differentiation in target tissues. Can activate the transcriptional activity of TFF1.
序列相似性	Belongs to the nuclear hormone receptor family. NR3 subfamily. Contains 1 nuclear receptor DNA-binding domain.
结构域	Composed of three domains: a modulating N-terminal domain, a DNA-binding domain and a C-terminal ligand-binding domain.
翻译后修饰	Phosphorylated by cyclin A/CDK2. Phosphorylation probably enhances transcriptional activity. Glycosylated; contains N-acetylglucosamine, probably O-linked. Ubiquitinated. Deubiquitinated by OTUB1. Dimethylated by PRMT1 at Arg-260. The methylation may favor cytoplasmic localization. Palmitoylated (isoform 3). Not biotinylated (isoform 3).
细胞定位	Nucleus. Cytoplasm. Cell membrane. A minor fraction is associated with the inner membrane and Nucleus. Cytoplasm. Cell membrane. Associated with the inner membrane via palmitoylation.

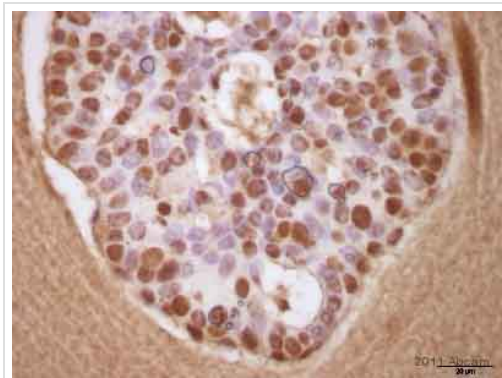
图片



Immunohistochemistry (Formalin/PFA-fixed paraffin-embedded sections) - Anti-Estrogen Receptor alpha antibody (ab37438)

This image is courtesy of an Abreview submitted by AntibodySolutions Ltd.

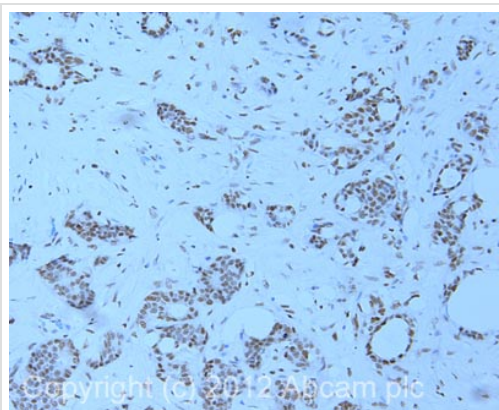
ab37438 staining uterus (human and mouse) and testis (rat) tissue sections by IHC-P. Sections were formaldehyde fixed and subjected to heat mediated antigen retrieval in citrate buffer (pH 6) prior to blocking in sequential (prediluted) peroxidase and protein block for 20 minutes at 20°C. The primary antibody was diluted 1/100 and incubated with the samples for 45 minutes at 20°C. A HRP-conjugated goat anti-rabbit antibody was used as the secondary.



Immunohistochemistry (Formalin/PFA-fixed paraffin-embedded sections) - Anti-Estrogen Receptor alpha antibody (ab37438)

This image is courtesy of an anonymous Abreview.

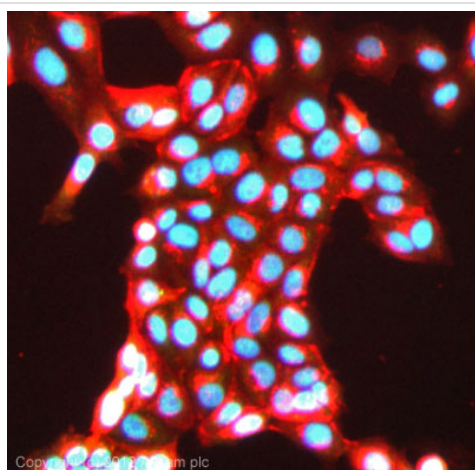
ab37438 staining Estrogen Receptor alpha in murine mammary gland tissue by Immunohistochemistry (Formalin/PFA-fixed paraffin-embedded sections). Tissue was fixed with formaldehyde and a heat mediated antigen retrieval step was performed using citrate buffer. Samples were blocked using 1.5% serum for 1 hour at 22°C and then incubated with ab37438 at a 1/25 dilution for 15 hours at 4°C. The secondary used was an undiluted biotin conjugated goat monoclonal.



Immunohistochemistry (Formalin/PFA-fixed paraffin-embedded sections) - Anti-Estrogen Receptor alpha antibody (ab37438)

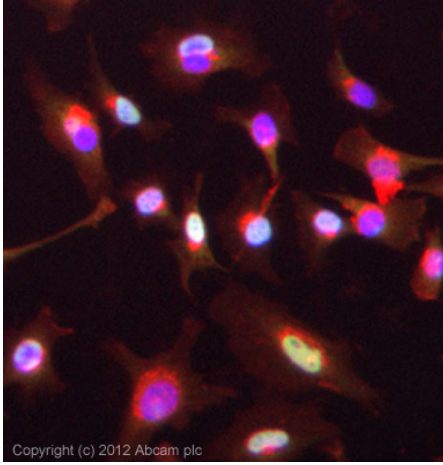
IHC image of Estrogen Receptor alpha staining in human breast ductal carcinoma formalin fixed paraffin embedded tissue section, performed on a Leica Bond™ system using the standard protocol F. The section was pre-treated using heat mediated antigen retrieval with sodium citrate buffer (pH6, epitope retrieval solution 1) for 20 mins. The section was then incubated with ab37438, 1µg/ml, for 15 mins at room temperature and detected using an HRP conjugated compact polymer system. DAB was used as the chromogen. The section was then counterstained with haematoxylin and mounted with DPX.

For other IHC staining systems (automated and non-automated) customers should optimize variable parameters such as antigen retrieval conditions, primary antibody concentration and antibody incubation times.



Immunocytochemistry/ Immunofluorescence - Anti-Estrogen Receptor alpha antibody (ab37438)

ICC/IF image of ab37438 stained MCF7 cells. The cells were 5% methanol fixed (5 min) and then incubated in 1%BSA / 10% normal goat serum / 0.3M glycine in 0.1% PBS-Tween for 1h to permeabilise the cells and block non-specific protein-protein interactions. The cells were then incubated with the antibody (ab37438, 5µg/ml) overnight at +4°C. The secondary antibody (green) was ab96899, DyLight® 488 goat anti-rabbit IgG (H+L) used at a 1/250 dilution for 1h. Alexa Fluor® 594 WGA was used to label plasma membranes (red) at a 1/200 dilution for 1h. DAPI was used to stain the cell nuclei (blue) at a concentration of 1.43µM.



Immunocytochemistry/ Immunofluorescence - Anti-Estrogen Receptor alpha antibody (ab37438)

ICC/IF image of ab37438 stained HeLa cells. The cells were 4% formaldehyde fixed (10 min) and then incubated in 1%BSA / 10% normal goat serum / 0.3M glycine in 0.1% PBS-Tween for 1h to permeabilise the cells and block non-specific protein-protein interactions. The cells were then incubated with the antibody (ab37438, 5µg/ml) overnight at +4°C. The secondary antibody (green) was ab96899, DyLight® 488 goat anti-rabbit IgG (H+L) used at a 1/250 dilution for 1h. Alexa Fluor® 594 WGA was used to label plasma membranes (red) at a 1/200 dilution for 1h. DAPI was used to stain the cell nuclei (blue) at a concentration of 1.43µM.

Please note: All products are "FOR RESEARCH USE ONLY AND ARE NOT INTENDED FOR DIAGNOSTIC OR THERAPEUTIC USE"

Our Abpromise to you: Quality guaranteed and expert technical support

- Replacement or refund for products not performing as stated on the datasheet
- Valid for 12 months from date of delivery
- Response to your inquiry within 24 hours
- We provide support in Chinese, English, French, German, Japanese and Spanish
- Extensive multi-media technical resources to help you
- We investigate all quality concerns to ensure our products perform to the highest standards

If the product does not perform as described on this datasheet, we will offer a refund or replacement. For full details of the Abpromise, please visit <http://www.abcam.cn/abpromise> or contact our technical team.

Terms and conditions

- Guarantee only valid for products bought direct from Abcam or one of our authorized distributors