

Product datasheet

Anti-SENP1 antibody ab3657

2 图像

概述

产品名称	Anti-SENP1抗体
描述	兔多克隆抗体to SENP1
宿主	Rabbit
经测试应用	适用于: WB, ELISA, IHC-P
种属反应性	与反应: Human
免疫原	Synthetic peptide: CDQQILSSRQGHLDRSFT , corresponding to amino acids 43-59 of Human SENP 1. Run BLAST with Run BLAST with
阳性对照	HL60 whole cell lysate.

性能

形式	Liquid
存放说明	Shipped at 4°C. Store at +4°C short term (1-2 weeks). Upon delivery aliquot. Store at -20°C or -80°C. Avoid freeze / thaw cycle.
存储溶液	PBS with 0.1% sodium azide
纯度	Protein G purified
纯化说明	This antibody is purified through a protein G column and eluted out with both high and low pH buffers. It is neutralized immediately after elution, followed by dialysis against PBS.
克隆	多克隆
同种型	IgG

应用

Our [Abpromise guarantee](#) covers the use of **ab3657** in the following tested applications.

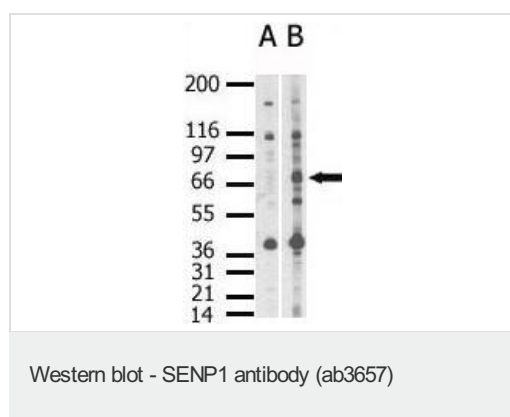
The application notes include recommended starting dilutions; optimal dilutions/concentrations should be determined by the end user.

应用	Ab评论	说明
WB		1/100 - 1/500. Predicted molecular weight: 73.351 kDa.
ELISA		1/1000.
IHC-P		1/50 - 1/100.

靶标

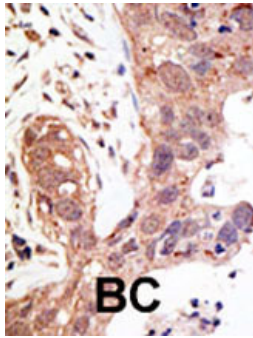
功能	Protease that catalyzes two essential functions in the SUMO pathway: processing of full-length SUMO1, SUMO2 and SUMO3 to their mature forms and deconjugation of SUMO1, SUMO2 and SUMO3 from targeted proteins. Deconjugates SUMO1 from HIPK2. Deconjugates SUMO1 from HDAC1, which decreases its transcriptional repression activity.
组织特异性	Highly expressed in testis. Expressed at lower levels in thymus, pancreas, spleen, liver, ovary and small intestine.
序列相似性	Belongs to the peptidase C48 family.
细胞定位	Nucleus. Cytoplasm. Shuttles between cytoplasm and nucleus.

图片



Western blot analysis of SENP 1 in whole HL60 cell lysate using ab3657 (Lane B) but not pre-immune serum (lane A). Secondary HRP-anti-rabbit was used for signal visualization with chemiluminescence.

Western blot analysis of SENP 1 in whole HL60 cell lysate using ab3657 (Lane B) but not pre-immune serum (lane A). Secondary HRP-anti-rabbit was used for signal visualization with chemiluminescence.



ab3657 staining SENP1 in human breast carcinoma (BC) tissue by Immunohistochemistry (Formalin/PFA-fixed paraffin-embedded sections).

Immunohistochemistry (Formalin/PFA-fixed paraffin-embedded sections) - SENP1 antibody (ab3657)

Please note: All products are "FOR RESEARCH USE ONLY AND ARE NOT INTENDED FOR DIAGNOSTIC OR THERAPEUTIC USE"

Our Abpromise to you: Quality guaranteed and expert technical support

- Replacement or refund for products not performing as stated on the datasheet
- Valid for 12 months from date of delivery
- Response to your inquiry within 24 hours
- We provide support in Chinese, English, French, German, Japanese and Spanish
- Extensive multi-media technical resources to help you
- We investigate all quality concerns to ensure our products perform to the highest standards

If the product does not perform as described on this datasheet, we will offer a refund or replacement. For full details of the Abpromise, please visit <http://www.abcam.cn/abpromise> or contact our technical team.

Terms and conditions

- Guarantee only valid for products bought direct from Abcam or one of our authorized distributors