

Product datasheet

Anti-EDF1 antibody ab33588

1 图像

概述

产品名称	Anti-EDF1抗体
描述	兔多克隆抗体to EDF1
特异性	ab33588 recognises endothelial differentiation-related factor 1 (EDF1).
经测试应用	适用于: WB, ELISA
种属反应性	与反应: Human 预测可用于: Mouse, Rat, Chicken, Cow, Dog, Pig 
免疫原	Synthetic peptide: MAESDWDTVT VLRKKGPTAA QAKSKQAILA AQRREGDVET SKKWAAGQNK, corresponding to a region within N terminal amino acids 1-50 of Human EDF1. Run BLAST with ExPASy Run BLAST with NCBI
阳性对照	Jurkat cell lysate.

性能

形式	Liquid
存放说明	Shipped at 4°C. Upon delivery aliquot and store at -20°C. Avoid freeze / thaw cycles.
存储溶液	Preservative: None Constituents: 2% Sucrose, PBS
纯度	Immunogen affinity purified
克隆	多克隆
同种型	IgG

应用

Our [Abpromise guarantee](#) covers the use of **ab33588** in the following tested applications.

The application notes include recommended starting dilutions; optimal dilutions/concentrations should be determined by the end user.

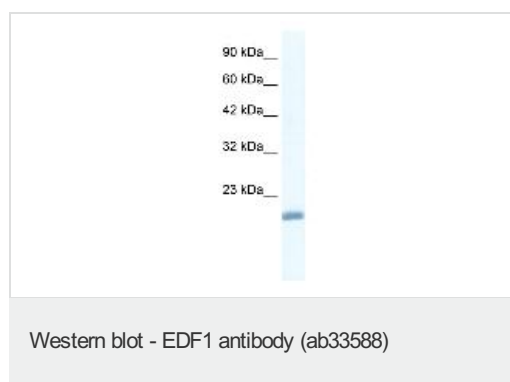
应用	Ab评论	说明

应用	Ab评论	说明
WB		Use a concentration of 1.25 µg/ml. Predicted molecular weight: 16 kDa. Good results were obtained when blocked with 5% non-fat dry milk in 0.05% PBS-T.
ELISA		1/312500.

靶标

功能	Transcriptional coactivator stimulating NR5A1 and ligand-dependent NR1H3/LXRA and PPARG transcriptional activities. Enhances the DNA-binding activity of ATF1, ATF2, CREB1 and NR5A1. Regulates nitric oxid synthase activity probably by sequestering calmodulin in the cytoplasm. May function in endothelial cells differentiation, hormone-induced cardiomyocytes hypertrophy and lipid metabolism.
组织特异性	Expressed in brain, liver, lung, kidney and heart (at protein level). Ubiquitously expressed. More abundant in heart, pancreas, liver, intestine and adipose tissues.
序列相似性	Contains 1 HTH cro/C1-type DNA-binding domain.
发展阶段	Expressed in fetal tissues. More abundant in kidney.
结构域	The IQ motif, which is involved in calmodulin binding, overlaps with the binding domain for nuclear receptors and transcription factors. Its phosphorylation probably allows a switch between the two activities of the protein.
翻译后修饰	Phosphorylated (by PKA and PKC).
细胞定位	Cytoplasm. Nucleus. Also nuclear upon binding to NR5A1 and treatment of cells with TPA or forskolin.

图片



Anti-EDF1 antibody (ab33588) at 1.25 µg/ml
+ Jurkat cell lysate at 10 µg

Secondary

HRP conjugated anti Rabbit IgG at 1/50000 -
1/100000

Predicted band size : 16 kDa

Observed band size : 16 kDa

Please note: All products are "FOR RESEARCH USE ONLY AND ARE NOT INTENDED FOR DIAGNOSTIC OR THERAPEUTIC USE"

Our Abpromise to you: Quality guaranteed and expert technical support

- Replacement or refund for products not performing as stated on the datasheet

- Valid for 12 months from date of delivery
- Response to your inquiry within 24 hours

- We provide support in Chinese, English, French, German, Japanese and Spanish
- Extensive multi-media technical resources to help you
- We investigate all quality concerns to ensure our products perform to the highest standards

If the product does not perform as described on this datasheet, we will offer a refund or replacement. For full details of the Abpromise, please visit <http://www.abcam.cn/abpromise> or contact our technical team.

Terms and conditions

- Guarantee only valid for products bought direct from Abcam or one of our authorized distributors