

Product datasheet

Anti-Hepsin antibody ab31148

★☆☆☆☆ 1 Abreviews 1 图像

概述

产品名称	Anti-Hepsin抗体
描述	兔多克隆抗体to Hepsin
特异性	This antibody specifically recognized recombinant human hepsin in Western blot analysis
经测试应用	适用于: IHC-P, ELISA, WB, Flow Cyt
种属反应性	与反应: Human
免疫原	Synthetic peptide (Human).

性能

形式	Liquid
存放说明	Shipped at 4°C. Upon delivery aliquot and store at -20°C. Avoid freeze / thaw cycles.
存储溶液	Preservative: 0.02% Sodium Azide Constituents: 0.14M Sodium chloride, 10mM PBS, pH 7.2
纯度	Immunogen affinity purified
纯化说明	This antibody was purified by hepsin (peptide) coupling chromatography. Purity was determined by SDS PAGE (blue stain), showing that the IgG constitute was 90% of total protein.
克隆	多克隆
同种型	IgG

应用

Our [Abpromise guarantee](#) covers the use of **ab31148** in the following tested applications.

The application notes include recommended starting dilutions; optimal dilutions/concentrations should be determined by the end user.

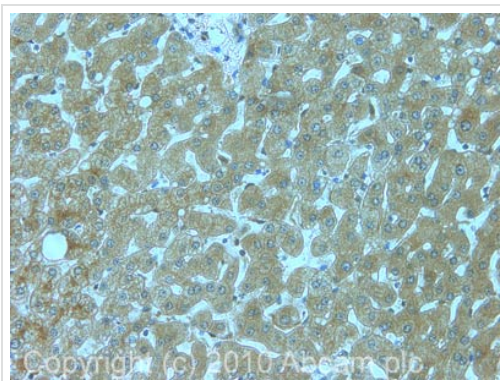
应用	Ab评论	说明
IHC-P		Use at an assay dependent concentration. Perform heat mediated antigen retrieval with citrate buffer pH 6 before commencing with IHC staining protocol.
ELISA		1/50000.

应用	Ab评论	说明
WB	★☆☆☆☆	Use at an assay dependent concentration. Predicted molecular weight: 46 kDa.
Flow Cyt		Use at an assay dependent concentration. ab171870 -Rabbit polyclonal IgG, is suitable for use as an isotype control with this antibody.

靶标

功能	Plays an essential role in cell growth and maintenance of cell morphology.
组织特异性	Present in most tissues, with the highest level in liver.
序列相似性	Belongs to the peptidase S1 family. Contains 1 peptidase S1 domain. Contains 1 SRCR domain.
细胞定位	Membrane.

图片



Immunohistochemistry (Formalin/PFA-fixed paraffin-embedded sections) - Anti-Hepsin antibody (ab31148)

IHC image of ab31148 staining in human liver formalin fixed paraffin embedded tissue section, performed on a Leica Bond™ system using the standard protocol F. The section was pre-treated using heat mediated antigen retrieval with sodium citrate buffer (pH6, epitope retrieval solution 1) for 20 mins. The section was then incubated with ab31148, 5µg/ml, for 15 mins at room temperature and detected using an HRP conjugated compact polymer system. DAB was used as the chromogen. The section was then counterstained with haematoxylin and mounted with DPX.

For other IHC staining systems (automated and non-automated) customers should optimize variable parameters such as antigen retrieval conditions, primary antibody concentration and antibody incubation times.

Please note: All products are "FOR RESEARCH USE ONLY AND ARE NOT INTENDED FOR DIAGNOSTIC OR THERAPEUTIC USE"

Our Abpromise to you: Quality guaranteed and expert technical support

- Replacement or refund for products not performing as stated on the datasheet
- Valid for 12 months from date of delivery
- Response to your inquiry within 24 hours

- We provide support in Chinese, English, French, German, Japanese and Spanish
- Extensive multi-media technical resources to help you
- We investigate all quality concerns to ensure our products perform to the highest standards

If the product does not perform as described on this datasheet, we will offer a refund or replacement. For full details of the Abpromise, please visit <http://www.abcam.cn/abpromise> or contact our technical team.

Terms and conditions

- Guarantee only valid for products bought direct from Abcam or one of our authorized distributors