


Product datasheet

Anti-CAMKIV antibody, prediluted ab27490

1 图像

概述

产品名称	Anti-CAMKIV抗体, prediluted
描述	兔多克隆抗体to CAMKIV, prediluted
宿主	Rabbit
特异性	ab27490 recognises CAMKIV.
经测试应用	适用于: IHC-P
种属反应性	与反应: Human, Cynomolgus monkey 预测可用于: Mouse, Rat 
免疫原	Synthetic peptide. This information is considered to be commercially sensitive.
阳性对照	Human brain, Jurkat cells.

性能

形式	Prediluted
存放说明	Shipped at 4°C. Store at +4°C.
存储溶液	Preservative: 0.1% Sodium Azide Constituents: PBS, BSA
纯度	Immunogen affinity purified
克隆	多克隆
同种型	IgG

应用

Our [Abpromise guarantee](#) covers the use of **ab27490** in the following tested applications.

The application notes include recommended starting dilutions; optimal dilutions/concentrations should be determined by the end user.

应用	Ab评论	说明
----	------	----

IHC-P

应用说明

IHC-P: use neat for 10 min at room temperature. Perform heat mediated antigen retrieval before commencing with IHC staining protocol. In particular, boil tissue sections in 10mM citrate buffer

pH 6.0 for 10 min and then cool at room temperature for 20 min.

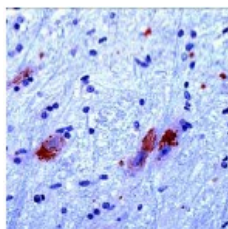
Not yet tested in other applications.

Optimal dilutions/concentrations should be determined by the end user.

靶标

功能	Calcium/calmodulin-dependent protein kinase belonging to a proposed calcium-triggered signaling cascade. May be involved in transcriptional regulation. May be involved in regulation of microtubule dynamics. In vitro, phosphorylates CREB1, CREBBP, PRM2, MEF2A, MEF2D and STMN1/OP18. May be involved in spermatogenesis. May play a role in the consolidation/retention of hippocampus-dependent long-term memory.
组织特异性	Expressed in epithelial ovarian cancer tissue.
序列相似性	Belongs to the protein kinase superfamily. CAMK Ser/Thr protein kinase family. CaMK subfamily. Contains 1 protein kinase domain.
翻译后修饰	Autophosphorylated and phosphorylated by CAMKK1 and CAMKK2 (By similarity). Dephosphorylated by serine/threonine protein phosphatase 2A, probably on Thr-200.
细胞定位	Cytoplasm. Nucleus. Substantial localization in certain neuronal nuclei. In spermatids associated with chromatin and nuclear matrix.

图片



paraffin embedded formalin fixed human brain tissue section stained with anti CAMKIV (ab27490).

Immunohistochemistry (Formalin/PFA-fixed paraffin-embedded sections) - Anti-CAMKIV antibody, prediluted (ab27490)

Please note: All products are "FOR RESEARCH USE ONLY AND ARE NOT INTENDED FOR DIAGNOSTIC OR THERAPEUTIC USE"

Our Abpromise to you: Quality guaranteed and expert technical support

- Replacement or refund for products not performing as stated on the datasheet
- Valid for 12 months from date of delivery
- Response to your inquiry within 24 hours
- We provide support in Chinese, English, French, German, Japanese and Spanish
- Extensive multi-media technical resources to help you
- We investigate all quality concerns to ensure our products perform to the highest standards

If the product does not perform as described on this datasheet, we will offer a refund or replacement. For full details of the Abpromise, please visit <http://www.abcam.cn/abpromise> or contact our technical team.

Terms and conditions

- Guarantee only valid for products bought direct from Abcam or one of our authorized distributors