

Product datasheet

Anti-Cytokeratin 16 antibody [SPM264], prediluted ab25820

1 图像

概述

|       |   |
|-------|---|
| 产品名称  | Anti-Cytokeratin 16抗体[SPM264], prediluted   |
| 描述    | 小鼠单克隆抗体[SPM264] to Cytokeratin 16, prediluted   |
| 宿主    | Mouse   |
| 特异性   | ab25820 recognises cytokeratin 16. We have data to indicate that this antibody may not cross react with Rat. However, this has not been conclusively tested and expression levels may vary in certain cell lines/tissues. |
| 经测试应用 | 适用于: IHC-P  |
| 种属反应性 | 与反应: Human  |
| 免疫原   | Synthetic peptide from the C-terminus of cytokeratin 16. (Human)  |
| 阳性对照  | Squamous cell carcinoma   |

性能

|      |   |
|------|---|
| 形式   | Prediluted                                    |
| 存放说明 | Shipped at 4°C. Store at +4°C. Do Not Freeze. |
| 存储溶液 | Preservative: 0.1% Sodium Azide               |
| 克隆   | 单克隆   |
| 克隆编号 | SPM264  |
| 同种型  | IgG1  |

应用

Our [Abpromise guarantee](#) covers the use of **ab25820** in the following tested applications.

The application notes include recommended starting dilutions; optimal dilutions/concentrations should be determined by the end user.

| 应用 | Ab评论 | 说明 |
|----|------|----|
|----|------|----|

IHC-P

应用说明

IHC-P: Ready-to-use (2ug/ml) for 30 min at RT Staining of formalin-fixed tissues requires boiling tissue sections in 10mM citrate buffer, pH 6.0 for 10 min followed by cooling at RT for 20 min.

Not yet tested in other applications.

Optimal dilutions/concentrations should be determined by the end user.

## 靶标

### 组织特异性

Expressed in the hair follicle, nail bed and in mucosal stratified squamous epithelia and, suprabasally, in oral epithelium and palmoplantar epidermis. Also found in luminal cells of sweat and mammary gland ducts.

### 疾病相关

Defects in KRT16 are a cause of pachyonychia congenita type 1 (PC1) [MIM:167200]; also known as Jadassohn-Lewandowsky syndrome. PC1 is an autosomal dominant ectodermal dysplasia characterized by hypertrophic nail dystrophy resulting in onychogryposis (thickening and increase in curvature of the nail), palmoplantar keratoderma, follicular hyperkeratosis, and oral leukokeratosis. Hyperhidrosis of the hands and feet is usually present.

Defects in KRT16 are the cause of palmoplantar keratoderma non-epidermolytic focal (FNEPPK) [MIM:613000]. A dermatological disorder characterized by non-epidermolytic palmoplantar keratoderma limited to the pressure points on the balls of the feet, with later mild involvement on the palms. Oral, genital and follicular keratotic lesions are often present.

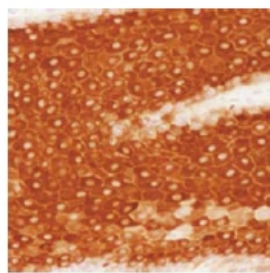
Defects in KRT16 are a cause of unilateral palmoplantar verrucous nevus (UPVN) [MIM:144200]. UPVN is characterized by a localized thickening of the skin in parts of the right palm and the right sole.

Note=KRT16 and KRT17 are coexpressed only in pathological situations such as metaplasias and carcinomas of the uterine cervix and in psoriasis vulgaris.

### 序列相似性

Belongs to the intermediate filament family.

## 图片



ab25820, undiluted staining human cyokeratin 16 in squamous cell carcinoma by Immunohistochemistry, Formalin fixed Paraffin embedded tissue.

Immunohistochemistry (Formalin-fixed paraffin-embedded sections) - Cytokeratin 16 antibody [SPM264] (ab25820)

**Please note:** All products are "FOR RESEARCH USE ONLY AND ARE NOT INTENDED FOR DIAGNOSTIC OR THERAPEUTIC USE"

## Our Abpromise to you: Quality guaranteed and expert technical support

- Replacement or refund for products not performing as stated on the datasheet
- Valid for 12 months from date of delivery

- Response to your inquiry within 24 hours
- We provide support in Chinese, English, French, German, Japanese and Spanish
- Extensive multi-media technical resources to help you
- We investigate all quality concerns to ensure our products perform to the highest standards

If the product does not perform as described on this datasheet, we will offer a refund or replacement. For full details of the Abpromise, please visit <http://www.abcam.cn/abpromise> or contact our technical team.

### **Terms and conditions**

---

- Guarantee only valid for products bought direct from Abcam or one of our authorized distributors