

Product datasheet

Anti-CD146 antibody [c264] (Phycoerythrin) ab25435

1 图像

概述

产品名称	Anti-CD146抗体[c264] (Phycoerythrin)
描述	小鼠单克隆抗体[c264] to CD146 (Phycoerythrin)
偶联物	Phycoerythrin. Ex: 488nm, Em: 575nm
特异性	ab25435 recognise Chicken MCAM, Mr 98 kDa (protein core ~84 kDa).
经测试应用	适用于: Flow Cyt, IP, IHC-Fr
种属反应性	与反应: Chicken
免疫原	Pooled Ed15 and Ed16 thymocytes from H.B15, H.B19 and H.B21 chicken embryos

性能

形式	Liquid
存放说明	Shipped at 4°C. Store at +4°C.
存储溶液	Preservative: 0.09% Sodium Azide Constituents: 16% Sucrose, PBS; Stabilizing agent
纯度	IgG fraction
克隆	单克隆
克隆编号	c264
同种型	IgG2b
轻链类型	kappa

应用

Our [Abpromise guarantee](#) covers the use of **ab25435** in the following tested applications.

The application notes include recommended starting dilutions; optimal dilutions/concentrations should be determined by the end user.

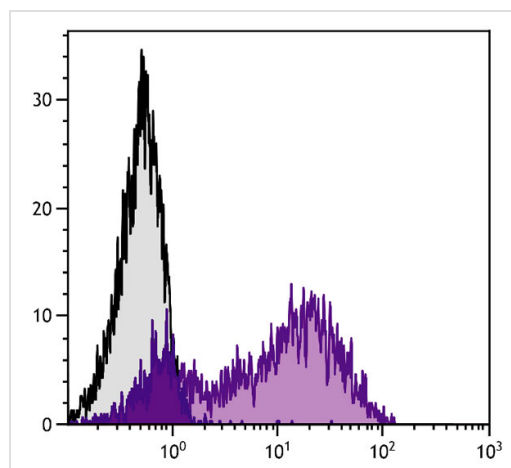
应用	Ab评论	说明
Flow Cyt		Use 0.2µg for 10 ⁶ cells.
IP		Use at an assay dependent dilution.

应用	Ab评论	说明
IHC-Fr		Use at an assay dependent dilution.

靶标

功能	Plays a role in cell adhesion, and in cohesion of the endothelial monolayer at intercellular junctions in vascular tissue. Its expression may allow melanoma cells to interact with cellular elements of the vascular system, thereby enhancing hematogeneous tumor spread. Could be an adhesion molecule active in neural crest cells during embryonic development. Acts as surface receptor that triggers tyrosine phosphorylation of FYN and PTK2, and a transient increase in the intracellular calcium concentration.
组织特异性	Detected in endothelial cells in vascular tissue throughout the body. May appear at the surface of neural crest cells during their embryonic migration. Appears to be limited to vascular smooth muscle in normal adult tissues. Associated with tumor progression and the development of metastasis in human malignant melanoma. Expressed most strongly on metastatic lesions and advanced primary tumors and is only rarely detected in benign melanocytic nevi and thin primary melanomas with a low probability of metastasis.
序列相似性	Contains 3 Ig-like C2-type (immunoglobulin-like) domains. Contains 2 Ig-like V-type (immunoglobulin-like) domains.
细胞定位	Membrane.

图片



Flow cytometry analysis staining CD146 in chicken thymocytes using ab25435 at a dilution of 0.1 ug/10⁶ cells. Mouse anti-chicken MCAM-PE was used as an isotype control.

Flow Cytometry - Anti-CD146 antibody [c264]
(Phycoerythrin) (ab25435)

Please note: All products are "FOR RESEARCH USE ONLY AND ARE NOT INTENDED FOR DIAGNOSTIC OR THERAPEUTIC USE"

Our Abpromise to you: Quality guaranteed and expert technical support

- Replacement or refund for products not performing as stated on the datasheet

- Valid for 12 months from date of delivery
- Response to your inquiry within 24 hours

- We provide support in Chinese, English, French, German, Japanese and Spanish
- Extensive multi-media technical resources to help you
- We investigate all quality concerns to ensure our products perform to the highest standards

If the product does not perform as described on this datasheet, we will offer a refund or replacement. For full details of the Abpromise, please visit <http://www.abcam.cn/abpromise> or contact our technical team.

Terms and conditions

- Guarantee only valid for products bought direct from Abcam or one of our authorized distributors