

Product datasheet

Anti-Somatostatin Receptor 1 antibody ab2366

★★★★☆ 1 Abreviews 2 References 3 图像

概述

<b>产品名称</b>	Anti-Somatostatin Receptor 1抗体
<b>描述</b>	兔多克隆抗体to Somatostatin Receptor 1
<b>宿主</b>	Rabbit
<b>特异性</b>	This antibody reacts with a 60 kD protein, known as Somatostatin Receptor 1.
<b>经测试应用</b>	<b>适用于:</b> IHC-P, IHC-Fr, WB, ICC
<b>种属反应性</b>	<b>与反应:</b> Mouse, Rat, Human
<b>免疫原</b>	Synthetic peptide (Rat)A synthetic peptide derived from the C-terminus of rat somatostatin receptor 1
<b>阳性对照</b>	Pancreas
<b>常规说明</b>	<p>The Somatostatin family of receptors have five members, sst1-sst5, as well as two isoforms of Somatostatin receptor 2, sst2A and sst2B. They are coupled to G protein and are involved in regulation of numerous processes including secretion of insulin, glucagons and growth hormone and excitation of neurons in central and peripheral nervous system.</p>

性能

<b>形式</b>	Liquid
<b>存放说明</b>	Shipped at 4°C. Store at +4°C short term (1-2 weeks). Store at -20°C or -80°C. Avoid freeze / thaw cycle.
<b>存储溶液</b>	Preservative: 0.05% Sodium Azide Constituents: 1% BSA
<b>纯度</b>	Protein A purified
<b>Primary antibody说明</b>	The Somatostatin family of receptors have five members, sst1-sst5, as well as two isoforms of Somatostatin receptor 2, sst2A and sst2B. They are coupled to G protein and are involved in regulation of numerous processes including secretion of insulin, glucagons and growth hormone and excitation of neurons in central and peripheral nervous system.
<b>克隆</b>	多克隆
<b>同种型</b>	IgG

## 应用

Our [Abpromise guarantee](#) covers the use of **ab2366** in the following tested applications.

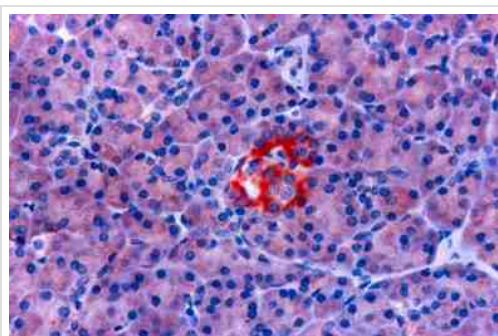
The application notes include recommended starting dilutions; optimal dilutions/concentrations should be determined by the end user.

应用	Ab评论	说明
IHC-P	★★★★☆	1/50 - 1/75. Perform heat mediated antigen retrieval before commencing with IHC staining protocol.
IHC-Fr		1/50 - 1/75.
WB		Use at an assay dependent concentration. Detects a band of approximately 50 kDa (predicted molecular weight: 43 kDa).
ICC		Use at an assay dependent concentration.

## 靶标

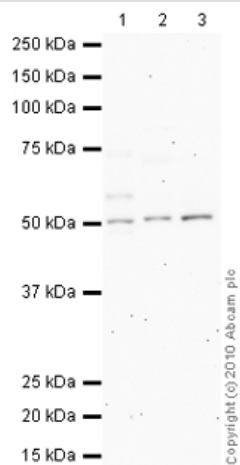
功能	Receptor for somatostatin with higher affinity for somatostatin-14 than -28. This receptor is coupled via pertussis toxin sensitive G proteins to inhibition of adenylyl cyclase. In addition it stimulates phosphotyrosine phosphatase and Na(+)/H(+) exchanger via pertussis toxin insensitive G proteins.
组织特异性	Fetal kidney, fetal liver, and adult pancreas, brain, lung, jejunum and stomach.
序列相似性	Belongs to the G-protein coupled receptor 1 family.
细胞定位	Cell membrane.

## 图片



Formalin fixed paraffin embedded human pancreas stained with Somatostatin Receptor using ABC and AEC chromogen.

Immunohistochemistry (Formalin/PFA-fixed paraffin-embedded sections) - Somatostatin Receptor 1 antibody (ab2366)



Western blot - Somatostatin Receptor 1 antibody (ab2366)

**All lanes :** Anti-Somatostatin Receptor 1 antibody (ab2366) at 1 µg/ml

**Lane 1 :** PANC-1 nuclear extract lysate (ab14882)

**Lane 2 :** Human stomach tumor tissue lysate (adenocarcinoma) - total protein (ab29678)

**Lane 3 :** Human small intestine tissue lysate - total protein (ab29276)

Lysates/proteins at 10 µg per lane.

### Secondary

**All lanes :** Goat polyclonal to Rabbit IgG - H&L - Pre-Adsorbed (HRP) at 1/3000 dilution

Developed using the ECL technique.

Performed under reducing conditions.

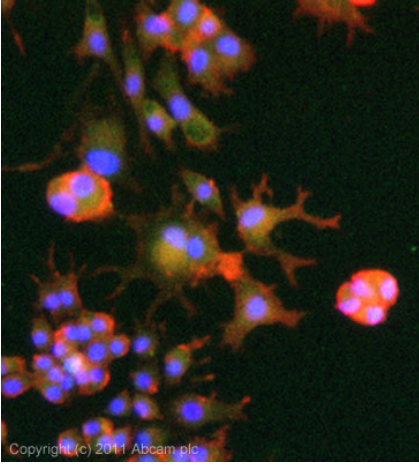
**Predicted band size:** 43 kDa

**Observed band size:** 50 kDa

**Additional bands at:** 58 kDa. We are unsure as to the identity of these extra bands.

**Exposure time:** 12 minutes

Somatostatin Receptor 1 contains a number of potential glycosylation sites (SwissProt) which may explain its migration at a higher molecular weight than predicted.



Immunocytochemistry/ Immunofluorescence - Anti-Somatostatin Receptor 1 antibody (ab2366)

ICC/IF image of ab2366 stained PC12 cells. The cells were 4% formaldehyde fixed (10 min) and then incubated in 1%BSA / 10% normal goat serum / 0.3M glycine in 0.1% PBS-Tween for 1h to permeabilise the cells and block non-specific protein-protein interactions. The cells were then incubated with the antibody (ab2366, 1µg/ml) overnight at +4°C. The secondary antibody (green) was Alexa Fluor® 488 goat anti-rabbit IgG (H+L) used at a 1/1000 dilution for 1h. Alexa Fluor® 594 WGA was used to label plasma membranes (red) at a 1/200 dilution for 1h. DAPI was used to stain the cell nuclei (blue) at a concentration of 1.43µM.

**Please note:** All products are "FOR RESEARCH USE ONLY AND ARE NOT INTENDED FOR DIAGNOSTIC OR THERAPEUTIC USE"

### Our Abpromise to you: Quality guaranteed and expert technical support

- Replacement or refund for products not performing as stated on the datasheet
- Valid for 12 months from date of delivery
- Response to your inquiry within 24 hours
- We provide support in Chinese, English, French, German, Japanese and Spanish
- Extensive multi-media technical resources to help you
- We investigate all quality concerns to ensure our products perform to the highest standards

If the product does not perform as described on this datasheet, we will offer a refund or replacement. For full details of the Abpromise, please visit <http://www.abcam.cn/abpromise> or contact our technical team.

### Terms and conditions

- Guarantee only valid for products bought direct from Abcam or one of our authorized distributors