


Product datasheet

Anti-TIP30 antibody ab22841

2 References 3 图像

概述

产品名称	Anti-TIP30抗体
描述	兔多克隆抗体to TIP30
宿主	Rabbit
经测试应用	适用于: WB, IHC-P, IHC-Fr
种属反应性	与反应: Human 预测可用于: Mouse, Rat, Rabbit, Horse, Guinea pig, Cow, Cat, Dog, Chimpanzee, Spider monkey 
免疫原	A region within a synthetic peptide: EILEQGLFSK VTLIGRRKLT FDEEAYKNVN QEVVDFEKLD DYASAFQGHD, corresponding to N terminal amino acids 37-86 of Human TIP30 Run BLAST with ExPASy Run BLAST with NCBI
阳性对照	Jurkat cell lysate (western blot), human liver tissue slide (IHC-P).

性能

形式	Liquid
存放说明	Shipped at 4°C. Upon delivery aliquot and store at -20°C. Avoid freeze / thaw cycles.
存储溶液	Preservative: None Constituents: 2% Sucrose, PBS
纯度	IgG fraction
克隆	多克隆
同种型	IgG

应用

Our [Abpromise guarantee](#) covers the use of **ab22841** in the following tested applications.

The application notes include recommended starting dilutions; optimal dilutions/concentrations should be determined by the end user.

应用	Ab评论	说明
WB		Use a concentration of 0.5 - 1 µg/ml. Predicted molecular weight: 27 kDa. Good results were obtained when blocked with 5% non-fat dry milk in 0.05% PBS-T.
IHC-P		Use at an assay dependent concentration.
IHC-Fr		Use at an assay dependent concentration. PubMed: 19104151

靶标

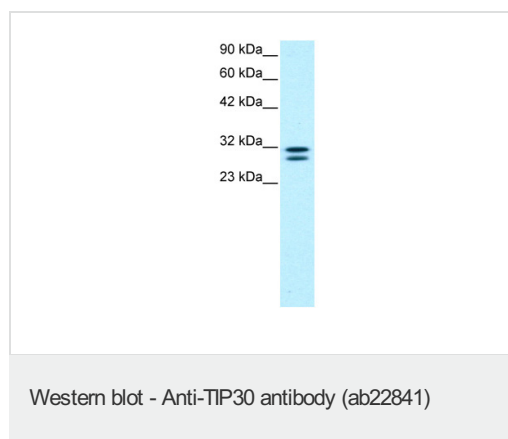
功能 Oxidoreductase required for tumor suppression. NADPH-bound form inhibits nuclear import by competing with nuclear import substrates for binding to a subset of nuclear transport receptors. May act as a redox sensor linked to transcription through regulation of nuclear import. Isoform 1 is a metastasis suppressor with proapoptotic as well as antiangiogenic properties. Isoform 2 has an antiapoptotic effect.

组织特异性 Ubiquitous. Highest level in liver. High levels in lung, skeletal muscle, pancreas and placenta. Moderate levels in heart and kidney. Low levels in brain. Not expressed or low levels in variant small cell lung carcinomas, 33% of hepatocellular carcinomas and neuroblastomas.

结构域 Unique C-terminus confers high proteasome-dependent instability to isoform 2.

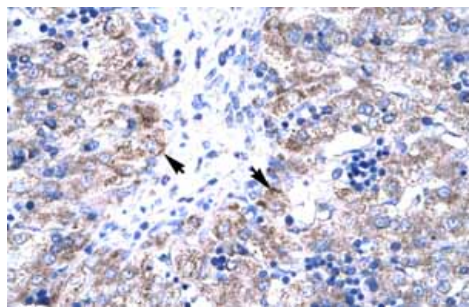
细胞定位 Cytoplasm. Nucleus envelope.

图片



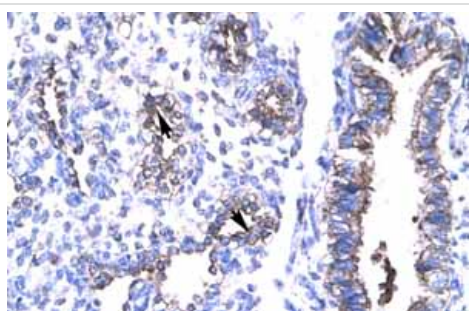
Anti-TIP30 antibody (ab22841) (0.5 - 1.0 µg/ml) + Jurkat cell lysate

Predicted band size: 27 kDa



Immunohistochemistry (Formalin/PFA-fixed paraffin-embedded sections) analysis of human liver tissue labelling TIP30 with ab22841 at a concentration of 4-8µg/ml. Positive labelled hepatocytes are indicated (arrows). Magnification: 400X.

Immunohistochemistry (Formalin/PFA-fixed paraffin-embedded sections)-Anti-TIP30 antibody(ab22841)



Immunohistochemistry (Formalin/PFA-fixed paraffin-embedded sections) analysis of human lung tissue labelling TIP30 with ab22841 at a concentration of 4-8µg/ml. Positive labelled alveolar cells are indicated (arrows). Magnification: 400X.

Immunohistochemistry (Formalin/PFA-fixed paraffin-embedded sections)-Anti-TIP30 antibody(ab22841)

Please note: All products are "FOR RESEARCH USE ONLY AND ARE NOT INTENDED FOR DIAGNOSTIC OR THERAPEUTIC USE"

Our Abpromise to you: Quality guaranteed and expert technical support

- Replacement or refund for products not performing as stated on the datasheet
- Valid for 12 months from date of delivery
- Response to your inquiry within 24 hours
- We provide support in Chinese, English, French, German, Japanese and Spanish
- Extensive multi-media technical resources to help you
- We investigate all quality concerns to ensure our products perform to the highest standards

If the product does not perform as described on this datasheet, we will offer a refund or replacement. For full details of the Abpromise, please visit <http://www.abcam.cn/abpromise> or contact our technical team.

Terms and conditions

- Guarantee only valid for products bought direct from Abcam or one of our authorized distributors