

Product datasheet

Anti-MASPIN antibody ab22354

★★★★☆ 1 Abreviews 1 References 3 图像

概述

产品名称	Anti-MASPIN抗体
描述	兔多克隆抗体to MASPIN
宿主	Rabbit
经测试应用	适用于: IHC-P, WB
种属反应性	与反应: Human 预测可用于: Mouse, Rat
免疫原	Synthetic peptide conjugated to KLH derived from within residues 100 - 200 of Human MASPIN. 参阅Abcam的专有抗源政策 (Peptide available as ab24350 .)
阳性对照	This antibody gave a positive signal in the following whole cell lysates: Human Prostate Tumor.

性能

形式	Liquid
存放说明	Shipped at 4°C. Store at +4°C short term (1-2 weeks). Upon delivery aliquot. Store at -20°C or -80°C. Avoid freeze / thaw cycle.
存储溶液	Preservative: 0.02% Sodium Azide Constituents: 1% BSA, PBS, pH 7.4
纯度	Immunogen affinity purified
克隆	多克隆
同种型	IgG

应用

Our [Abpromise guarantee](#) covers the use of **ab22354** in the following tested applications.

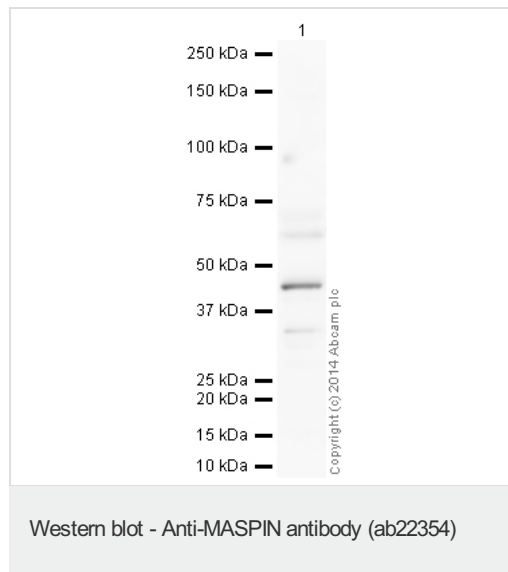
The application notes include recommended starting dilutions; optimal dilutions/concentrations should be determined by the end user.

应用	Ab评论	说明
IHC-P	★★★★☆	Use at an assay dependent concentration.
WB		Use a concentration of 1 µg/ml. Detects a band of approximately 40 kDa (predicted molecular weight: 42 kDa).

靶标

功能	Tumor suppressor. It blocks the growth, invasion, and metastatic properties of mammary tumors. As it does not undergo the S (stressed) to R (relaxed) conformational transition characteristic of active serpins, it exhibits no serine protease inhibitory activity.
组织特异性	Normal mammary epithelial cells.
序列相似性	Belongs to the serpin family. Ov-serpin subfamily.
细胞定位	Secreted > extracellular space.

图片



Anti-MASPIN antibody (ab22354) at 1 µg/ml +
Human prostate tumor tissue lysate
(adenocarcinoma) - total protein (ab30305) at
20 µg

Secondary

Goat Anti-Rabbit IgG H&L (HRP) (ab97051) at
1/50000 dilution

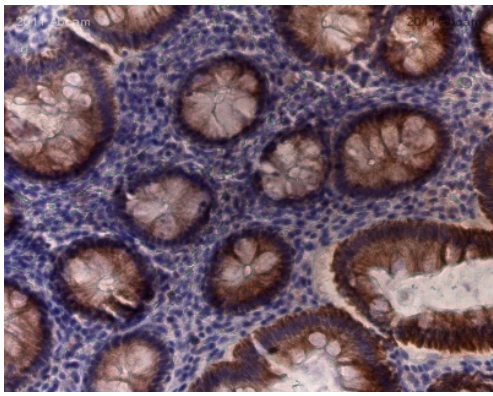
Performed under reducing conditions.

Predicted band size: 42 kDa

Observed band size: 42 kDa

Exposure time: 2 minutes

This blot was produced using a 4-12% Bis-tris gel under the MOPS buffer system. The gel was run at 200V for 50 minutes before being transferred onto a Nitrocellulose membrane at 30V for 70 minutes. The membrane was then blocked for an hour using 2% Bovine Serum Albumin before being incubated with ab22354 overnight at 4°C. Antibody binding was detected using an anti-rabbit antibody conjugated to HRP, and visualised using ECL development solution ab133406.

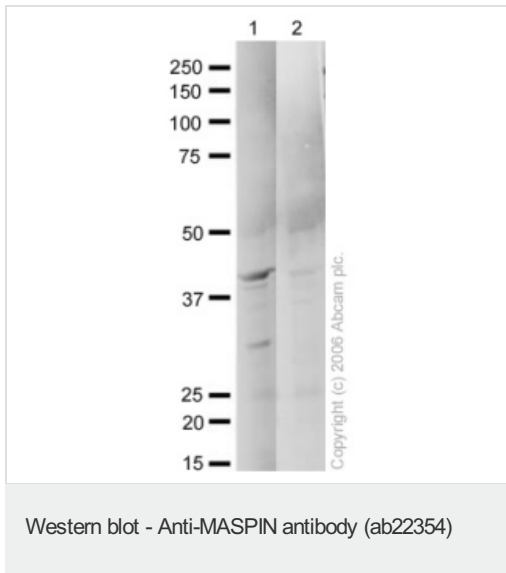


Immunohistochemistry (Formalin/PFA-fixed paraffin-embedded sections) - Anti-MASPIN antibody

(ab22354)

This image is courtesy an Abreview submitted by Rudolf Jung.

ab22354 staining MASPIN in human colon tissue by Immunohistochemistry (Formalin/PFA-fixed paraffin-embedded tissue sections). The sections were fixed in paraformaldehyde and subjected to heat-mediated antigen retrieval in TRIS-EDTA Buffer pH 9.0 and permeabilized with a wash buffer with Tween. The primary antibody was diluted 1/2000 and incubated with the sample for 30 minutes at 20°C. An HRP-conjugated Goat anti-Rabbit polyclonal was used as the secondary antibody.



All lanes : Anti-MASPIN antibody (ab22354)
at 1 µg/ml

Lane 1 : Human Prostate Tumor Tissue
Lysate at 20 ug

Lane 2 : Human Prostate Tumor Tissue
Lysate at 20 ug with Human MASPIN peptide
(ab24350) at 1 µg/ml

Secondary

All lanes : Goat polyclonal to Rabbit IgG
(Alexa Fluor® 680) at 1/10000 dilution

Performed under reducing conditions.

Predicted band size: 42 kDa

Observed band size: 40 kDa

Additional bands at: 30 kDa (possible
cleavage fragment)

ab22354 recognizes a band at approximately 40 kDa that corresponds in size to MASPIN (molecular weight of 42 kDa). This band is competed away by the addition of the immunizing peptide suggesting that the interaction is specific.

Please note: All products are "FOR RESEARCH USE ONLY AND ARE NOT INTENDED FOR DIAGNOSTIC OR THERAPEUTIC USE"

Our Abpromise to you: Quality guaranteed and expert technical support

- Replacement or refund for products not performing as stated on the datasheet
- Valid for 12 months from date of delivery
- Response to your inquiry within 24 hours
- We provide support in Chinese, English, French, German, Japanese and Spanish
- Extensive multi-media technical resources to help you
- We investigate all quality concerns to ensure our products perform to the highest standards

If the product does not perform as described on this datasheet, we will offer a refund or replacement. For full details of the Abpromise, please visit <http://www.abcam.cn/abpromise> or contact our technical team.

Terms and conditions

- Guarantee only valid for products bought direct from Abcam or one of our authorized distributors