

Product datasheet

Anti-IL23 Receptor antibody ab22059

1 References 1 图像

概述

产品名称	Anti-IL23 Receptor抗体
描述	兔多克隆抗体到 IL23 Receptor
宿主	Rabbit
特异性	Based on immunogen sequence, this antibody will recognize the 629 AA, 390 AA and 227 AA forms of human IL-23R.
经测试应用	适用于: WB
种属反应性	与反应: Mouse, Human
免疫原	Synthetic peptide: IPNMKNSNVVKMLQENSELMNNSSEQVLYVDPMITEIKEIFIPEHKPTD YKKENTGPLETRDYPQNSLFD , corresponding to amino acids 400-470 of Human IL23 Receptor. Run BLAST with Run BLAST with
阳性对照	Jurkat and NIH3T3 cells

性能

形式	Liquid
存放说明	Shipped at 4°C. Store at +4°C short term (1-2 weeks). Upon delivery aliquot. Store at -20°C or -80°C. Avoid freeze / thaw cycle.
存储溶液	Preservative: 0.05% Sodium Azide Constituents: 0.05% BSA, PBS
纯度	Whole antiserum
克隆	多克隆
同种型	IgG

应用

Our [Abpromise guarantee](#) covers the use of **ab22059** in the following tested applications.

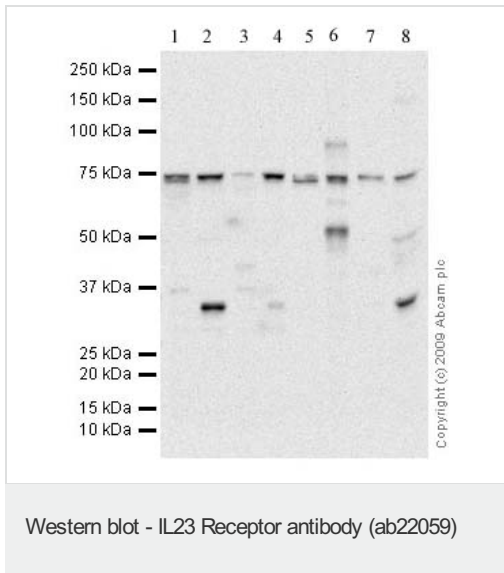
The application notes include recommended starting dilutions; optimal dilutions/concentrations should be determined by the end user.

应用	Ab评论	说明
WB		1/500. Detects a band of approximately 72 kDa (predicted molecular weight: 72 kDa).

靶标

功能	Associates with IL12RB1 to form the interleukin-23 receptor. Binds IL23 and mediates T-cells, NK cells and possibly certain macrophage/myeloid cells stimulation probably through activation of the Jak-Stat signaling cascade. IL23 functions in innate and adaptive immunity and may participate in acute response to infection in peripheral tissues. IL23 may be responsible for autoimmune inflammatory diseases and be important for tumorigenesis.
组织特异性	Expressed by monocytes, Th1, Th0, NK and dendritic cells. Isoform 1 is specifically expressed in NK cells.
疾病相关	<p>Genetic variations in IL23R are associated with inflammatory bowel disease type 17 (IBD17) [MIM:612261]. IBD17 is a chronic, relapsing inflammation of the gastrointestinal tract with a complex etiology. It is subdivided into Crohn disease and ulcerative colitis phenotypes. Crohn disease may affect any part of the gastrointestinal tract from the mouth to the anus, but most frequently it involves the terminal ileum and colon. Bowel inflammation is transmural and discontinuous; it may contain granulomas or be associated with intestinal or perianal fistulas. In contrast, in ulcerative colitis, the inflammation is continuous and limited to rectal and colonic mucosal layers; fistulas and granulomas are not observed. Both diseases include extraintestinal inflammation of the skin, eyes, or joints.</p> <p>Genetic variations in IL23R are a cause of susceptibility to psoriasis type 7 (PSORS7) [MIM:605606]. Psoriasis is a common, chronic inflammatory disease of the skin with multifactorial etiology. It is characterized by red, scaly plaques usually found on the scalp, elbows and knees. These lesions are caused by abnormal keratinocyte proliferation and infiltration of inflammatory cells into the dermis and epidermis.</p>
序列相似性	<p>Belongs to the type I cytokine receptor family. Type 2 subfamily.</p> <p>Contains 2 fibronectin type-III domains.</p>
翻译后修饰	Phosphorylated in response to IL23.
细胞定位	Cell membrane.

图片



All lanes : Anti-IL23 Receptor antibody (ab22059) at 1 µg/ml

Lane 1 : Human colon tissue lysate - total protein (ab30051)

Lane 2 : Mouse colon tissue lysate - total protein (ab29544)

Lane 3 : Human spleen tissue lysate - total protein (ab29699)

Lane 4 : Mouse spleen tissue lysate - total protein (ab29293)

Lane 5 : A431 (Human epithelial carcinoma cell line) Whole Cell Lysate

Lane 6 : HeLa Whole Cell Lysate - Staurosporine Treated (24hr, 500nM)

Lane 7 : NIH 3T3 whole cell lysate (ab7179)

Lane 8 : Liver (Mouse) Tissue Lysate

Secondary

All lanes : Goat polyclonal to Rabbit IgG - H&L - Pre-Adsorbed (HRP) at 1/3000 dilution

Developed using the ECL technique.

Performed under reducing conditions.

Predicted band size: 72 kDa

Exposure time: 8 minutes

Please note: All products are "FOR RESEARCH USE ONLY AND ARE NOT INTENDED FOR DIAGNOSTIC OR THERAPEUTIC USE"

Our Abpromise to you: Quality guaranteed and expert technical support

- Replacement or refund for products not performing as stated on the datasheet
- Valid for 12 months from date of delivery
- Response to your inquiry within 24 hours
- We provide support in Chinese, English, French, German, Japanese and Spanish
- Extensive multi-media technical resources to help you
- We investigate all quality concerns to ensure our products perform to the highest standards

If the product does not perform as described on this datasheet, we will offer a refund or replacement. For full details of the Abpromise, please visit <http://www.abcam.cn/abpromise> or contact our technical team.

Terms and conditions

- Guarantee only valid for products bought direct from Abcam or one of our authorized distributors