

Product datasheet

Anti-CXCR2 antibody ab21641

1 References 2 图像

概述

产品名称	Anti-CXCR2抗体
描述	兔多克隆抗体to CXCR2
宿主	Rabbit
经测试应用	适用于: WB, ICC/IF 不适用于: IHC-P
种属反应性	与反应: Human
免疫原	Synthetic peptide conjugated to KLH derived from within residues 1 - 100 of Human CXCR2. 参阅Abcam的专有抗源政策 (Peptide available as ab24280 .)
阳性对照	In Western Blot, ab21641 gave a positive signal in HL60 whole cell lysate and in human spleen tissue lysate. In IF, this antibody gave a positive signal in HeLa, HepG2 and MCF7 cells.

性能

形式	Liquid
存放说明	Shipped at 4°C. Store at +4°C short term (1-2 weeks). Upon delivery aliquot. Store at -20°C or -80°C. Avoid freeze / thaw cycle.
存储溶液	Preservative: 0.02% Sodium Azide Constituents: 1% BSA, PBS, pH 7.4
纯度	Immunogen affinity purified
克隆	多克隆
同种型	IgG

应用

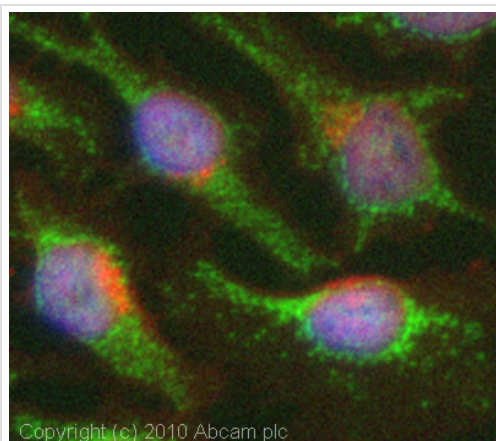
Our [Abpromise guarantee](#) covers the use of **ab21641** in the following tested applications.

The application notes include recommended starting dilutions; optimal dilutions/concentrations should be determined by the end user.

应用	Ab评论	说明
WB		Use a concentration of 1 µg/ml. Detects a band of approximately 41 kDa (predicted molecular weight: 41 kDa).

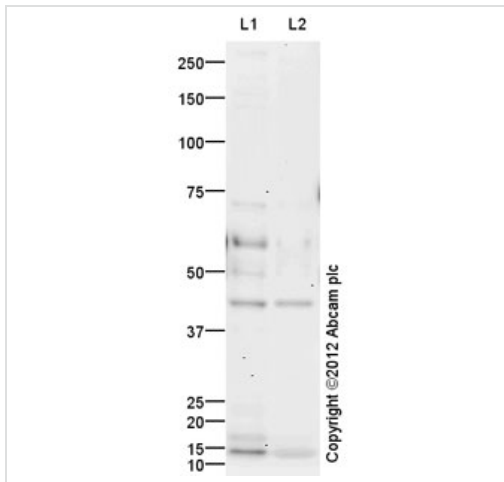
应用	Ab评论	说明
ICC/IF		Use a concentration of 5 µg/ml.
应用说明		Is unsuitable for IHC-P.
靶标		
功能		Receptor for interleukin-8 which is a powerful neutrophil chemotactic factor. Binding of IL-8 to the receptor causes activation of neutrophils. This response is mediated via a G-protein that activates a phosphatidylinositol-calcium second messenger system. Binds to IL-8 with high affinity. Also binds with high affinity to CXCL3, GRO/MGSA and NAP-2.
序列相似性		Belongs to the G-protein coupled receptor 1 family.
翻译后修饰		Phosphorylated upon ligand binding; which is required for desensitization.
细胞定位		Cell membrane.

图片



Immunocytochemistry/ Immunofluorescence - CXCR2 antibody (ab21641)

ICC/IF image of ab21641 stained HeLa cells. The cells were 4% PFA fixed (10 min) and then incubated in 1%BSA / 10% normal goat serum / 0.3M glycine in 0.1% PBS-Tween for 1h to permeabilise the cells and block non-specific protein-protein interactions. The cells were then incubated with the antibody (ab21641, 5µg/ml) overnight at +4°C. The secondary antibody (green) was Alexa Fluor® 488 goat anti-rabbit IgG (H+L) used at a 1/1000 dilution for 1h. Alexa Fluor® 594 WGA was used to label plasma membranes (red) at a 1/200 dilution for 1h. DAPI was used to stain the cell nuclei (blue) at a concentration of 1.43µM. This antibody also gave a positive result in 4% PFA fixed (10 min) HepG2 and MCF7 cells at 5µg/ml.



Western blot - Anti-CXCR2 antibody (ab21641)

All lanes : Anti-CXCR2 antibody (ab21641)
at 1 µg/ml

Lane 1 : HL60 (Human promyelocytic leukemia cell line) Whole Cell Lysate

Lane 2 : Human spleen tissue lysate - total protein (ab29699)

Lysates/proteins at 20 µg per lane.

Secondary

All lanes : Goat Anti-Rabbit IgG H&L (HRP) preadsorbed (ab97080) at 1/5000 dilution

Predicted band size: 41 kDa

Observed band size: 41 kDa

Additional bands at: 15 kDa, 60 kDa. We are unsure as to the identity of these extra bands.

Exposure time: 12 minutes

Please note: All products are "FOR RESEARCH USE ONLY AND ARE NOT INTENDED FOR DIAGNOSTIC OR THERAPEUTIC USE"

Our Abpromise to you: Quality guaranteed and expert technical support

- Replacement or refund for products not performing as stated on the datasheet
- Valid for 12 months from date of delivery
- Response to your inquiry within 24 hours
- We provide support in Chinese, English, French, German, Japanese and Spanish
- Extensive multi-media technical resources to help you
- We investigate all quality concerns to ensure our products perform to the highest standards

If the product does not perform as described on this datasheet, we will offer a refund or replacement. For full details of the Abpromise, please visit <http://www.abcam.cn/abpromise> or contact our technical team.

Terms and conditions

- Guarantee only valid for products bought direct from Abcam or one of our authorized distributors