

Product datasheet

Anti-Methionine Sulfoxide Reductase A antibody [1C8] ab16742

1 References 1 图像

概述

产品名称	Anti-Methionine Sulfoxide Reductase A抗体[1C8]
描述	小鼠单克隆抗体[1C8] to Methionine Sulfoxide Reductase A
宿主	Mouse
特异性	We have data to indicate that this antibody may not cross react with Rat. However, this has not been conclusively tested and expression levels may vary in certain cell lines/tissues.
经测试应用	适用于: ELISA
种属反应性	与反应: Mouse, Human
免疫原	Recombinant full length protein (Human) purified from E.coli.
阳性对照	HepG2 cell lysates

性能

形式	Liquid
存放说明	Shipped at 4°C. Upon delivery aliquot and store at -20°C or -80°C. Avoid repeated freeze / thaw cycles.
存储溶液	Preservative: 0.03% Sodium Azide Constituents: 50% Glycerol, 0.01% BSA, HEPES, 0.15M Sodium chloride
纯度	Protein G purified
克隆	单克隆
克隆编号	1C8
同种型	IgG1
轻链类型	kappa

应用

Our [Abpromise guarantee](#) covers the use of **ab16742** in the following tested applications.

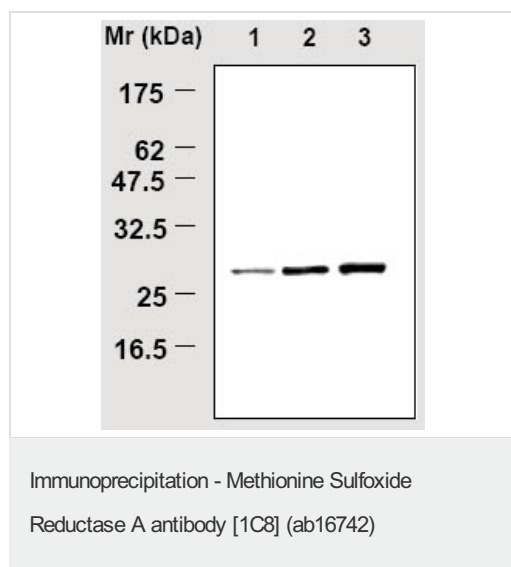
The application notes include recommended starting dilutions; optimal dilutions/concentrations should be determined by the end user.

应用	Ab评论	说明
ELISA		Use at an assay dependent dilution.

## 靶标

功能	Has an important function as a repair enzyme for proteins that have been inactivated by oxidation. Catalyzes the reversible oxidation-reduction of methionine sulfoxide in proteins to methionine.
组织特异性	Ubiquitous. Highest expression in adult kidney and cerebellum, followed by liver, heart ventricles, bone marrow and hippocampus.
序列相似性	Belongs to the MsrA Met sulfoxide reductase family.
细胞定位	Cytoplasm; Cytoplasm. Nucleus and Mitochondrion.

## 图片



Immunoprecipitation analysis of ab16742  
(used at 1-2ug/ml lysate):

Lane 1: Input

Lane 2: Precipitates (HepG2)

Lane 3: Precipitates (Mouse liver)

**Please note:** All products are "FOR RESEARCH USE ONLY AND ARE NOT INTENDED FOR DIAGNOSTIC OR THERAPEUTIC USE"

## Our Abpromise to you: Quality guaranteed and expert technical support

- Replacement or refund for products not performing as stated on the datasheet
- Valid for 12 months from date of delivery
- Response to your inquiry within 24 hours
- We provide support in Chinese, English, French, German, Japanese and Spanish
- Extensive multi-media technical resources to help you
- We investigate all quality concerns to ensure our products perform to the highest standards

If the product does not perform as described on this datasheet, we will offer a refund or replacement. For full details of the Abpromise, please visit <http://www.abcam.cn/abpromise> or contact our technical team.

## Terms and conditions

---

- Guarantee only valid for products bought direct from Abcam or one of our authorized distributors